

ACTA MVSEI APVLENSIS

APULUM LXI

series *ARCHAEOLOGICA ET ANTHROPOLOGICA*

Fondator

ION BERCIU

Editor

GABRIEL TIBERIU RUSTOIU

Colegiul editorial:

RADU ARDEVAN – Universitatea „Babeș-Bolyai”, Cluj-Napoca
DAN BĂCUEȚ-CRIȘAN – Muzeul Județean de Istorie și Artă, Zalău
NIKOLAUS BOROFFKA – Deutsches Archäologisches Institut, Berlin
HORIA ION CIUGUDEAN – Muzeul Național al Unirii, Alba Iulia
SORIN NEMETI – Universitatea „Babeș-Bolyai”, Cluj-Napoca
CHRISTOPHER F. E. PARE – Universitatea „Johannes Gutenberg”, Mainz
ZENO KARL PINTER – Universitatea „Lucian Blaga”, Sibiu
CRISTIAN IOAN POPA – Universitatea „1 Decembrie 1918”, Alba Iulia
FLORIAN MATEI-POPESCU – Institutul de Arheologie „Vasile Pârvan”, București
IOAN CAROL OPRIȘ – Universitatea București
EMANOIL PRIPON – Muzeul Județean de Istorie și Artă, Zalău
AUREL RUSTOIU – Institutul de Arheologie și Istoria Artei, Cluj-Napoca
CRISTIAN SCHUSTER – Institutul de Arheologie „Vasile Pârvan”, București
VOLKER WOLLMANN – Obrigheim

Colegiul de redacție:

RADU OTA – redactor șef
SIDONIA PETRONELA OLEA – secretar de redacție
CRISTINEL FÂNTÂNEANU – secretar de redacție
ADINA BOGDAN – membru
GEORGE VALENTIN BOUNEGRU – membru
ILIE LASCU – membru
CRISTIAN TITUS FLORESCU – membru
ANCA TIMOFAN – membru

Adresa de corespondență:

MUZEUL NAȚIONAL AL UNIRII ALBA IULIA
510010 ALBA IULIA
Str. Mihai Viteazul, 12-14
Tel. 0258/813300

Mailing address:

MUZEUL NAȚIONAL AL UNIRII ALBA IULIA
RO – 510010 ALBA IULIA
12-14, Mihai Viteazul St.
Tel. (+40) (258) 813300

www.revista-apulum.ro; www.mnuai.ro

© 2024 MUZEUL NAȚIONAL AL UNIRII ALBA IULIA

ISSN – 1013-428X

ISSN – 2247 – 8701

ISSN-L – 2247 – 8701

ACTA MVSEI APVLENSIS

APVLVM

LXI

series *ARCHAEOLOGICA ET ANTHROPOLOGICA*



ALBA IULIA

MMXXIII

Tehnoredactare: RADU OTA

Traducerea și verificarea textelor în limba engleză: ADINA BOGDAN

Autorii își asumă întreaga răspundere pentru conținutul studiilor

Materialele nepublicate nu se restituie autorilor

S U M A R

CONTENTS – SOMMAIRE – INHALT

IOAN OPRIȘ, In memoriam Hadriani Daicoviciu (11 octombrie 1932 – 4 octombrie 1984).....	XI
RADU ARDEVAN, Câteva amintiri despre Hadrian Daicoviciu.....	XXXI
VASILE MOGA, In memoriam Hadriani Daicoviciu.....	XXXIX
CRISTINEL FĂNTÂNEANU, Profesorul Sabin Adrian Luca la 65 de ani.....	XLI

STUDII ȘI ARTICOLE – STUDIES AND ARTICLES

ARHEOLOGIE & ANTROPOLOGIE

ARCHAEOLOGY & ANTHROPOLOGY

RADU-ANDREI SPIRIDON, Materialul litic șlefuit din situl de la Tărtăria - <i>Gura Luncii</i> (jud. Alba, România). Campaniile 2019 și 2021 <i>The Ground Stone Assemblage from Tărtăria - Gura Luncii (Alba County, Romania). 2019 and 2021 Campaigns</i>	1
TÜNDE HORVATH, An Unprovenanced Human Figurine in the Collection of Classical Antiquities of the Museum of Fine Arts (Part 1) <i>O figurină antropomorfă de origine necunoscută în colecția de antichități clasice a Muzeului de Arte Frumoase (partea I)</i>	51
GABRIEL BĂLAN, RALUCA BURLACU-TIMOFTE, ORIANA SVEDAC, ANDREI MĂRINCEAN, SORIN FELEA, Cercetările arheologice preventive de la Șag – <i>Situl 5</i> (jud. Timiș) <i>Rescue Archaeological Research at Șag – Site 5 (Timiș County)</i> ...	95
GABRIEL MIRCEA TALMAȚCHI, Proto-monedă, bijuterii, amulete... Despre două categorii de piese de bronz descoperite în teritoriul Istro-Pontic (secolele V-III a.Chr.) <i>Proto-Coins, Jewels, Amulets... About Two Categories of Bronze Pieces Discovered in the Istro-Pontic Territory (5th-3rd Centuries BC)</i>	167

DOREL BONDOC, LIVIA BUZOIANU, O amforă elenistică șampilată de la Dăneasa, județul Olt <i>A Stamped Hellenistic Amphora from Dăneasa, Olt County.....</i>	193
MARIAM SLIMOUN, Les épitaphes bilingues, latin et araméen, de Tibiscum <i>Epitafurile bilingve, în latină și aramaică, de la Tibiscum.....</i>	199
GABRIELA FILIP, Sarcophagus of <i>Aelius Iulius Iulianus</i> from Romula, an Expression of Roman Provincial Art and Poetry <i>Sarcofagul lui Aelius Iulius Iulianus din Romula, o expresie a artei și poeziei provinciale romane</i>	231
RADU OTA, ANDREI BUTA †, Material tegular șampilat descoperit recent în castrul roman de la Apulum <i>Stamped Tegular Material Recently Discovered in the Roman Fortress of Apulum</i>	247
DAN GEORGE ANGHEL, Utilizarea gudronului din coajă de mesteacăn în perioada romană la Apulum <i>Use of Birch Bark Tar During the Roman Period at Apulum.....</i>	281
CSABA SZABÓ, IOAN MUNTEAN, MIRUNA LIBIȚĂ-PARTICĂ, ORSOLYA GYURKA, Materiality of Roman Religion in Apulum. Catalogue and Topography of the Finds <i>Materialitatea religiei romane la Apulum. Catalogul și topografia descoperirilor.....</i>	311
RADU PETCU, INGRID PETCU-LEVELI, A Lead Votive Statuette Depicting a <i>Genius Cucullatus</i> Discovered Near Tomis (Moesia Inferior) <i>O statueta votivă din plumb ilustrând un Genius Cucullatus descoperită lângă Tomis (Moesia Inferior).....</i>	377
ALEXANDER HARIZANOV, <i>Plumbatae</i> from <i>Dacia Ripensis</i> : the Lead-Weighted Darts From a Newly Discovered Fortified Settlement Near Modern-Day Dimovo, Bulgaria, in Their Provincial and Regional Context <i>Plumbatae din Dacia Ripensis: săgeți de mână cu plumb dintr-o așezare fortificată recent descoperită lângă Dimovo de astăzi, Bulgaria, în contextul lor provincial și regional</i>	395

ARHEOZOOLOGIE

ARCHAEOZOOLOGY

- ALEXANDRA-PAULA SICOE, MIHAI GLIGOR, SIMINA MARGARETA STANC, Exploatarea resurselor animale în așezarea eneolitică de la Alba Iulia - *Lumea Nouă*: analiza arheozoologică a unui complex aparținând grupului Foeni
Exploitation of Animal Resources in the Eneolithic Settlement of Alba Iulia - Lumea Nouă: Archaeozoological Analysis of a Feature Belonging to the Foeni Cultural Group 433
- XENIA POP, Cercetări arheozoologice în așezarea din epoca bronzului târziu de la Conop - *Sit 5* (Jud. Arad)
Archaeozoology Research in the Late Bronze Age Settlement at Conop - Sit 5 (Arad County)..... 455
- GEORGETA EL SUSI, FLORIN CIULAVU, Cercetări arheozoologice în așezarea romană de la Apulum – Colonia Aurelia Apulensis
Archaeozoological Research in the Roman Settlement from Apulum – Colonia Aurelia Apulensis 471

RESTAURARE – CONSERVARE – INVESTIGAȚII

RESTORATION – CONSERVATION – INVESTIGATIONS

- ANDREEA-BRÂNDUȘA BUNGĂRDEAN, Intervenții de conservare și restaurare asupra unui ancadrament de piatră descoperit la clădirea fostei primării din Turda
Conservation and Restoration Interventions on a Stone Framing Discovered at the Building of the Former Town Hall in Turda 503
- CARMEN CECILIA DRAGOMIR, Salvarea și protejarea patrimoniului cultural mobil provenit din descoperiri întâmplătoare. Studiu de caz: depozitul de bronzuri din comuna Iara, județul Cluj
Saving and Protecting Chance Discoveries of Movable Cultural Heritage. Case Study: the Bronze Deposit from Iara Comune, Cluj County..... 517

RECENZII ȘI NOTE DE LECTURĂ

REVIEWS AND READER'S NOTES

- MARIUS-MIHAI CIUTĂ, Tudor Roșu, Florin Bogdan, *Apulum. În universul unei reviste*, Bibliotheca Musei Apulensis XLII, Editura Muzeului Național al Unirii Alba Iulia – Editura Mega, Alba Iulia – Cluj-Napoca, 2023, 214 pagini..... 527
- GEORGE BOUNEGRU, Andrea Popa, *Managementul integrat al patrimoniului cultural mondial în România*, Studiu de caz: frontiera romană din Dacia. Siturile de epocă romană de la Brețcu, Comolău și Boroșneu Mare, Editura Astra Museum, Sibiu, 2023, 279 pagini, 73 figuri..... 537
- CLAUDIU PURDEA, Augustin Lazăr, Sorin Alămoreanu, Marius M. Ciută (ed.), *Combaterea spălării bunurilor culturale pe piața antichităților: rolul expertului judiciar/Fighting the laundering of cultural goods on the antiques market: the role of the judicial expert: in memoriam Barbara Deppert-Lippitz*, Ed. Universul Juridic, București, 2024, 311 pagini..... 539

CRONICA PUBLICAȚIILOR

THE CHRONICLE OF THE PUBLICATIONS

- GEORGE BOUNEGRU, Cronica publicațiilor membrilor Secției Arheologie, apărute în anul 2023..... 545
- SIDONIA PETRONELA OLEA, Cronica publicațiilor membrilor Compartimentelor Restaurare ceramică – metal – textile și Restaurare piatră din cadrul Centrului Național de Conservare – Restaurare Carte Veche Alba Iulia, apărute în anul 2023..... 550

NECROLOG

OBITUARY

RADU OTA, ANCA-DANIELA MATIȘ, ANCA TIMOFAN
Andrei Buta, un destin frânt prea devreme.....551

Lista autorilor.....555

MATERIALITY OF ROMAN RELIGION IN APULUM. CATALOGUE AND TOPOGRAPHY OF THE FINDS

Csaba SZABÓ

University of Szeged

Department of Religious Studies/Centre of Roman Studies „Babeş-
Bolyai” University Cluj-Napoca

Ioan MUNTEAN

Collaborator of National History Museum of Romania Bucharest

Miruna LIBIȚĂ-PARTICĂ

Collaborator of National History Museum of Romania Bucharest

Orsolya GYURKA

Móra Ferenc Museum, Szeged

Cuvinte cheie: Apulum, epigrafie, istoriografie, religia romană, Dacia romană

Key words: Apulum, epigraphy, historiography, Roman religion, Roman Dacia

Introduction

The conurbation of Apulum is one of the most important urban centres of the Danubian provinces: the quantity and artistic quality of the material heritage produced and used in the territory of Apulum in the period of 106-271 AD represents the third largest and most relevant Roman material heritage in an urban context North of the Alps after Carnuntum and Aquincum (**fig. 1**)¹.

The legionary fort, the *canabae* and perhaps, traces of the first civilian settlement (*pagus Apulensis*) were formed after 106 AD on the bank of the Marisisa river (Maros/Mureş²) and a backwater of the Ampoi river whose course was modified in the 18th century and was an urban centre in Roman Dacia till the abandonment of the province in 271 AD and for few decades after³. Although the toponym is not Latin (probably Dacian)⁴, the Roman settlement shows no archaeological evidence for pre-Roman phase and the later, Medieval urban centre formed in the 9th-10th century was built on the ruins of the legionary

¹ On the urban centres of the Danubian provinces see: Piso 2003; Donev 2019; Donev 2020; Szabó 2022.

² Nemeti 2010, p. 109.

³ On the history of the city see: Popa 1975; Diaconescu 2004; Ota 2012. On the late antique history of the city see also: Ota 2020.

⁴ Russu 1949.

fortress and the surroundings. The ruins of the Roman sites of Apulum were constantly looted and reused since late antiquity (especially the legionary fortress), with significant level of destruction in the Arpadian period (11th-13th century), Renaissance period (15th-16th century), the Habsburg administration (18th century), the Austro-Hungarian Empire (1867-1918) and in modern Romania (after 1918) as well⁵.

The conurbation of Apulum consists of the following topographic units: the legionary fortress of the XIII Gemina legion (**fig. 2**)⁶, the *canabae* (later the *municipium Septimium Apulense*), the *praetorium consularis* (palace complex of the governors: **fig. 3**), the civilian town (*municipium Aurelium Apulense/ colonia Aurelia Apulensis*: **fig. 4**) and the cemeteries of the conurbation⁷.

The study of material evidence of Roman religion in Apulum has a long and problematic historiography, summarized ten years ago in one of the first articles on the history of research of Roman religion in Apulum⁸. In this study, we aim to present the major results of the research since 2014, display the topography of finds and major sites of religious communication in the conurbation of Apulum and provide a preliminary catalogue of all the stone and bronze monuments used in Roman religious communication which later will consist for the framework of a digital database focusing on the materiality of Roman religion in Apulum (MRRA).

Roman religion in Apulum: evidence of the last decade (2014-2024)

The last decade in Roman archaeology represents the intense use of digital humanities⁹, transdisciplinarity with natural sciences¹⁰ and several new theoretical turns in social sciences used in the interpretation of material heritage of the Roman Empire¹¹. These changes are partially attested also in Romania, although the study of Roman provincial archaeology here still lacks numerous, well-established trends of international research¹². The study of Roman religion in the last decade also produced numerous, paradigmatic studies, focusing on new theoretical questions and transdisciplinary approaches¹³. For our case study, a particularly important aspect is the emerging studies on ancient urban religion,

⁵ On the history of research of Apulum see: Szabó 2014a; Szabó 2016a; Szabó 2016b.

⁶ Moga 1998; Cupcea 2024.

⁷ Diaconescu 2004; Bounegru 2017.

⁸ Szabó 2014a. See also: Szabó, Boda 2014.

⁹ Bagnall, Heath 2018; Szabó 2020b; Da Vela *et alii* 2023.

¹⁰ Scheidel 2018.

¹¹ Tanner, Gardner 2024.

¹² See my summary on this topic regarding the study of Roman Dacia in the 21st century: Szabó 2020a.

¹³ A summary of the research: Szabó 2024a.

religious glocalism (the local appropriation of global-universal features) and lived religion in antiquity¹⁴. These new trends were slowly introduced also in the recent studies focusing on Roman religion in Apulum. The last decade has been dominated by three major fields: 1) publications focusing on new finds emerged from rescue excavations and urban archaeology; 2) publications focusing on general aspects and syntheses on Roman religion in Apulum and 3) digital humanities, museology and the impact of Roman religion in modern heritage studies.

The first category produced studies on new inscriptions and votive stone monuments emerged from the territory of the *Principia*/ legionary fortress¹⁵, the Mithraeum discovered in 2008 and investigated in 2013-2016 by an international team in the territory of the *municipium Septimium Apulense*¹⁶ and several finds discovered from undocumented or poorly documented contexts of the *colonia Aurelia Apulensis*¹⁷ or domestic contexts from rescue excavations in the *municipium Septimium Apulense*¹⁸. The discovery of a statue-treasure featuring Nemesis and Mars inside the legionary fortress in 2012 also provoked several studies, some of them arguing, that the find was a *spolia* and reused material of a Nemeseion that once stood next to an amphitheatre¹⁹. The only systematically excavated sanctuary of Apulum in the last decade was the Mithraeum from *municipium Septimium Apulense* (see below)²⁰. Studies on the iconographic features of individual monuments were published especially by Radu Ota, Anca Timofan and Radu Ciobanu²¹. Several individual monuments from old literature or from private collections were also published in the last decade²². Since the publication of the last major *corpus* of votive inscriptions in Apulum (IDR III/5.1-2.) that collected 443 inscribed monuments (altars, statue bases and figurate monuments)²³ 31 new were published or identified (see the catalogue below), which represents 6,9% of the 474 known votive inscriptions from the conurbation²⁴. The study of the figurative monuments is much more

¹⁴ Van Alten 2017; Rüpke 2018; Urciuoli 2020; Derks 2024.

¹⁵ Ota, Florescu 2017; Ota *et alii* 2018; Cupcea *et alii* 2020; Cupcea 2024.

¹⁶ Egri *et alii* 2018; McCarty *et alii* 2019; McCarty *et alii* 2020.

¹⁷ Ciută 2014; Szabó *et alii* 2016b.

¹⁸ Ota, Lascu 2022; Ota, Bounegru 2023 to name a few.

¹⁹ Ciobanu 2013; Szabó 2014b.

²⁰ McCarty *et alii* 2019; McCarty *et alii* 2020. A complete list of sanctuaries of Roman Dacia: Szabó 2015 (2020).

²¹ Ciobanu 2013; Ciobanu 2015; Ota 2014; Ota 2017; Pantheon II 2018; Pantheon III 2019.

²² Szabó *et alii* 2014; Mladin, Bounegru 2022.

²³ Piso 2001. Several votive inscriptions were also published in IDR III/5.2. by the same author.

²⁴ The number of unscribed altars is significant in Apulum (20-30 pieces at least in different collections of the local museum, but several pieces also in private collection in Alba Iulia), however we did not include these in the monuments, as their votive functionality is uncertain.

problematic. Although several popularizing volumes were published in the last decade, a comprehensive *corpus* of the figurative votive monuments still needs to be done²⁵.

General studies and syntheses on Roman religion in Apulum focused on the cult of Mithras in the *municipium*²⁶, the sacralised spaces of the city²⁷ and local forms of the cult of Venus, Silenus and Apollo²⁸. Several new studies were published on the cult of Liber Pater from Apulum, however, the long-awaited monograph on the sanctuary is still not done²⁹.

The third category of publications from the last decade are those which are focusing on the interferences of contemporary, modern museology and Roman religious studies. Results of the Pantheon 3D project focused on digital tools, techniques and methods used in museology, digitisation of votive monuments, which also resulted in popularising works on Roman religion for the greater public³⁰. Ortoľ Harľ's database (lupa.at) along with several other projects focusing on the digitisation of archaeological and museological material from Apulum has significantly contributed to the inquiry of Roman religion in Apulum³¹.

Digital Map of Apulum: topography of Roman religion

One of the research's challenges on Roman religion in Apulum is the topography of ancient settlement-complex and the provenience of the finds. In contrast with several well-preserved Roman cities in the Danubian provinces (*colonia Ulpia Traiana Sarmizegetusa*, Oescus, Novae, Carnuntum), Apulum enters in the category of Roman cities reused and overlapped by Medieval and Modern settlements (Bălggrad, Gyulafehérvár, Karlsburg, Alba Iulia) similarly to Vindobona (Wien/Vienna), Aquincum (Óbuda), Poetovio (Ptuj), Napoca (Cluj/Kolozsvár) or Tomis (Constanța) to name a few³². Several significant urban transformations and monumental construction-projects, such as the building of the Medieval fort³³, Saint Michael cathedral, Vauban-fortress-system³⁴, railway

²⁵ The monumental project of Ortoľ Harľ (lupa.at) documents a large part of the figurative monuments of Apulum, however it is far from being complete and numerous finds are wrongly interpreted.

²⁶ Sicoe 2014 with the finds from all Dacia including Apulum. See also: Szabó 2015a; Szabó 2015c; Pavel 2019; Szabó 2021.

²⁷ Szabó 2015b; Szabó 2015 (2020); Szabó 2018.

²⁸ Almăjanu, Ota 2015; Antal 2016; Ota 2019, p. 67; Ota, Buta 2022.

²⁹ Haynes 2014. For a summary of the research on the sanctuary: Szabó 2018, p. 78-92.

³⁰ Timofan *et alii* 2018; Pantheon II 2018; Pantheon III 2019.

³¹ Anghel *et alii* 2021, 8-14.

³² On the challenges of urban archaeology see: Moga *et alii* 2008; Szabó 2016a, p. 99-112.

³³ Anghel 1975.

network in the 1860s and the expansion of the modern city in the 20th century severely impacted or destroyed large parts of the Roman conurbation³⁵. Consequently, the modern urban development of the city is a critical factor in interpreting the material evidence of Roman religion in Apulum, as a considerable number of the finds presented in the catalogue, lack precise discovery location.

During the last 120 years various maps of ancient Apulum were published, and a very few had their focus exclusively on the materiality of Roman religion³⁶. In his map from 2001, Ioan Piso marked less than 50 votive inscriptions in Apulum with exact or approximate position³⁷. In the last two decades, multiple others can be marked on the map based on the increasing number of well-documented excavations (systematic and rescue as well). In 2016, I have initiated a personal project entitled Digital Map of Apulum (DMA) where I marked 178 archaeological sites and monuments with exact or approximate position of discovery³⁸. The map needs a detailed and critical revision, based on the studies published in the last decade, including the new findings since 2016. The role of digital maps and cartographic representations of ancient cities and their finds have proved to be useful and popular in the last 1-2 decades, as numerous recent research projects include a digital map of the finds which can be extended and modified constantly³⁹.

Despite the increasing number of discoveries with an exact or approximate findspot, there are only four archaeologically attested sacralised spaces in the conurbation of Apulum (**fig. 5**): the *praetorium consularis* (several sanctuaries discovered or presumed in the palace-complex of the governors)⁴⁰, the Liber Pater shrine⁴¹, the Mithraeum in the *municipium Septimium*⁴² and the *aedes signorum* in the *Principia* (**plate nr. I.**)⁴³. The number of epigraphically attested and presumed sacralised spaces is much higher: nine are attested epigraphically and at least 12 others are presumed based on the rich material inventories⁴⁴. Excavations from the last decade revealed only two sacralised

³⁴ Goronea 2007.

³⁵ Szabó 2016b.

³⁶ On the cartographic representations of ancient Apulum see: Szabó 2015e.

³⁷ Piso 2001, fig. 1-3.

³⁸ <https://religioacademici.wordpress.com/dma/>. Last access: 11.06.2024.

³⁹ For a summary of the recent projects on Roman religion see: Szabó 2020b.

⁴⁰ Piso 1995; Szabó 2015 (2020), p. 283-284.

⁴¹ Diaconescu *et alii* 1997; Haynes 2014. For a summary of the research see: Szabó 2018, p. 78-92.

⁴² Egri *et alii* 2018; McCarty *et alii* 2019.

⁴³ Gudea 2014; Cupcea *et alii* 2020.

⁴⁴ Szabó 2015 (2020), p. 310-313, 315-318.

spaces (*Mithraeum*, *aedes signorum*⁴⁵), the other finds associated with Roman religious communication were found in domestic or uncertain contexts. The emergence of non-destructive fieldwork methods (geophysical measurements, *LiDAR*, aerial photography) revealed large parts of the Roman city, especially in the North-West corner of the *colonia Aurelia Apulensis* and in *extra-muros* area located in the surroundings of Tăușor lake. The geophysical measurements of Kris Lockyear in 2002/2003 and 2018 revealed a large area of the *colonia*, north to Liber Pater sanctuary⁴⁶. The identification of the buildings is problematic: while the inscriptions discovered in that area suggest an Asklepieion⁴⁷, Ian Haynes suggested the presence of a bath-complex and a possible theatre⁴⁸. The second geophysical measurement of Kris Lockyear seems to question the presence of a theatre and suggests several small compartments and large building complexes attached to the northern city wall of the *colonia*⁴⁹. South of Liber Pater shrine, several other Roman buildings and kilns were identified by aerial photography⁵⁰. The recent map resulted from the integrated interpretation of Survey Data from the *Apulum Project*, coordinated by Ian Haynes, combining archival sources with magnetometry survey results (Ian Haynes, Alex Turner and Geophysical Survey Bradford Ltd), resistivity survey results (Kris Lockyear) and TST survey (Doru Bogdan, Jamie Sewell and Alex Turner), and aerial photographic survey results stemming from *The Later Prehistoric and Roman Landscape in Western Transylvania Project* coordinated by W. S. Hanson (Ioana Oltean and W. S. Hanson) (**fig. 6**)⁵¹. The excavations in the vicinity of the Liber Pater shrine in 2014 have shown that even regarding systematic excavations, buildings' functionality is hard to establish⁵².

The topography of Roman religion in the *canabae* territory (later *municipium Septimium Apulense*) is even more problematic: a large part of the settlement was destroyed during the construction of the Vauban fortress (18th century). From the *corpus* of votive monuments collected in this study, less than

⁴⁵ The *aedes signorum* and the *Principia* were not excavated in a systematic excavation. About the scandalous case and partial destruction of the *Principia* in 2011-2012 see: Piso 2011.

⁴⁶ Haynes 2014, p. 89.

⁴⁷ Idea proposed by several authors: Crișan 1971; Szabó 2004; Szabó 2018, p. 68-78.

⁴⁸ Haynes 2014, p. 89. See also: <https://cronica.cimec.ro/detail.asp?k=3055>. Last accessed: 09.07.2024.

⁴⁹ Unpublished, presented in a power point available online on the personal webpage of Kris Lockyear: https://www.academia.edu/36697779/Earth_Resistance_survey_in_practice. Last accessed: 12.06.2024.

⁵⁰ Hanson, Oltean 2003; Oltean 2007, fig. 5.34, 5.35 and 5.36 on several other possible buildings.

⁵¹ Information provided by prof. dr. Ian Haynes. We are grateful for his help and generosity.

⁵² See the problematic provenience of MRRA I.445, 449 and the functionality of the building next to the Liber Pater shrine: Bogdan *et alii* 2015. The functionality of the building was wrongly interpreted before the excavation in 2014 in the previous reports (see the online report nr. 30 in CIMEC: <https://cronica.cimec.ro/detail.asp?k=3055>).

10% of the monuments have a documented, archaeologically attested context. Most of the findings are discovered in the antiquarian and Romantic period of archaeology (15th to early 20th century) and even those attested in the 20th - 21st century there are few *in situ* documented cases. Most of the sacralised spaces of Apulum were looted during late antiquity, early Medieval period and even the excavated contexts, such as the Liber Pater sanctuary and the *Mithraeum* discovered in 2008 shows traces of Medieval and early Modern interventions. Numerous large monuments, such as MRRA II.2.26. discovered in the 18th century were already reused in earlier periods. Even recently discovered and well excavated contexts and their finds (MRRA I.452-453, 456, MRRA II.1.19) are attested in a secondary position. Based on the available data, the heatmap and density-maps of the conurbation show a significant concentration of votive material in the area of the Asklepieion (near the Tăușor lake), the sanctuary of Liber Pater, the palace-complex of the governors and the southern part of the *municipium Septimium* (today Bulevardul Încoronării), however few of them were attested *in situ* (**fig. 7a-b**). The distribution-map of the finds shows the importance of monumentalisation, but also a specific space topography between the military town and the cemetery on the Dealul Furcilor, separated by an area rich in sanctuaries and a high concentration of materiality of Roman religion (Bulevardul Încoronării). There is no clear evidence on the presence of a city wall between the cemetery and the southern part of the *municipium Septimium*, as it was suggested previously by Alexandru Diaconescu⁵³.

Materiality of Roman religion in Apulum: a catalogue

Collecting a *corpus* of all the votive monuments from the third richest city in materiality of Roman religion in the Danubian province was a challenge for the academic community since 19th century. As the city of Alba Iulia had no archaeological museum before 1888⁵⁴, the major publications before this period focused on a selection of pieces known from various private or institutional collections, such as the one from the garden of the Roman Catholic bishop or later the Batthyaneum⁵⁵. A range of important *corpora* were made by Austrian, French or Saxon scholars before 1888 on the rich Mithraic material and the epigraphic heritage of Apulum⁵⁶. The most notable one is the catalogue published by Johann Daniel Ferdinand Neigebaur (1783-1866) in 1851, where the German scholar enlists 281 inscriptions (funerary, votive and honorary)

⁵³ Diaconescu 2004.

⁵⁴ On the history of the museum see: Szabó 2016a, p. 154-179.

⁵⁵ Dârja 1997; Sipos, Vass 2011; Moga 2011.

⁵⁶ On the early epigraphic research of the material from Transylvania see: Bodor 1995.

followed by 69 other objects⁵⁷. Among the objects, he mentioned bronze statuettes of Mercurius, Diana, a bronze bust of Mercurius, a relief of Iuno and Jupiter, a relief of Aesculapius and Hygieia and several other, possibly votive pieces. Unfortunately, Neigebaur did not publish the drawings of these finds, the identification of most of these pieces is impossible now⁵⁸. An interesting *addendum* for Neigebaur's work is the unpublished manuscript of Lugosi Fodor András (undated but written before 1859)⁵⁹ where several figurative monuments from Dacia Superior appear, however their identification is almost impossible today. The publication of the *Corpus Inscriptionum Latinarum* and its additional volumes by Theodor Mommsen, Otto Hirschfeld and Alfred von Domaszewski created the most comprehensive catalogue of the votive inscriptions of Apulum till the early 20th century⁶⁰. The books and catalogues of Pál Király and Béla Cserni can be considered as supplements and commentaries for the CIL, valuable especially for the figurative monuments⁶¹. In his monograph on Roman Apulum and the county of Fehér, Cserni enlists only 98 objects without photographic material, arguing that „several hundred others are in the collection of the museum mentioned in the catalogues”⁶². Important additions to these publications are the unpublished inventory lists of Béla Cserni made in the period of 1888-1916, which enlists the new finds of the Roman city discovered in this period⁶³.

The aim to establish a complete catalogue of votive finds of Apulum is a titanic work and it will take several years of research. In this catalogue we intend to present only a preliminary list of the finds based on the major published epigraphic *corpora* (printed and digital)⁶⁴ and the published works focusing on the figurative monuments of Apulum (638 stone and bronze objects)⁶⁵. For a

⁵⁷ Neigebaur 1851, p. 163-166. On his work see: Wollmann 1983, p. 77-78.

⁵⁸ Pieces which certainly can be identified are those where he mentioned the previous bibliography, for example the large Mithraic reliefs from the Batthyaneum and the statue of Hekate Triformis from the collection of the Brukenthal Museum which might come from Apulum: Neigebaur 1851, p. 164, nr. 309. (see MRRA II.1.15.)

⁵⁹ Nemeti 2016.

⁶⁰ Piso 2001 for the history of the epigraphic research of Apulum and Szabó 2024b for the impact of Alfred von Domaszewski on the research of Apulum.

⁶¹ Király 1892, p. 335-370 on religion in Apulum.

⁶² Cserni 1901, p. 437-440.

⁶³ The catalogues of the museum and the pieces transferred from the Batthyaneum to the Museum were never published and are not digitized. Shortly mentioned in: Szabó 2016a, p. 160-164, Mladin, Bounegru 2022.

⁶⁴ Most importantly, Piso 2001 = IDR III/5, 1-2; ILD I-II; EDH and Clauss-Slaby and the recent numbers of the *L'Année épigraphique*.

⁶⁵ The most important ones: CIMRM II; CMRED I; Popa 1970; Berciu, Petolescu 1976; CCCA VI; CCET IV; Bărbulescu 1984; CCID; Țeposu-Marinescu, Pop 2000; RICIS; Diaconescu 2005; Diaconescu 2013; Lupa.at; Ota 2012; Sicoe 2014; Antal 2016; Pantheon II 2018; Pantheon III

comparison: a complete catalogue of the stone votive monuments in Carnuntum established in 2012 enlists 772 monuments⁶⁶. Other monuments were published since and the *Corpus Signorum Imperii Romani* volume on Carnuntum does not include the rich bronze material of the Roman city and the terracotta, lead and other objects either. The quantity of the materiality of Roman religion in Apulum (638 objects) can be compared only to Carnuntum and Aquincum, the three cities representing the largest concentration of material evidence of votive monuments outside Rome in the Northern provinces.

Our catalogue is divided into two major parts: the epigraphic and the anepigraphic monuments. The anepigraphic monuments are divided into several sub-sections based on their material: stone (marble, limestone), bronze, terracotta and other materials (lead). These categories are grouped also based on functionality, following the conventional categories established by the *Corpus Signorum Imperii Romani* committee and used also in the monograph of Gabrielle Kremer for her catalogue of Carnuntum: sculpture and high reliefs; reliefs; altars and statue bases; plaques; votive columns; architectural elements; forgeries; small fragments⁶⁷.

The complete catalogue of the materiality of Roman religion in Apulum (MRRRA) will be established in the first phase in the form of a digital catalogue, uniting for the first time all the votive inscriptions and figurative monuments (stone and bronze) discovered in the territory of the city⁶⁸. The catalogue hosted on an open access website (airtable) will allow us for a constant extension, modification and dynamic digital versatility of the *corpus*. A large number of keywords (tags) will allow us also to create a searching method with an unlimited number of ways of finding and organising criteria (keywords related to the content of inscriptions, personal names, iconographic features, material features, topography, historiography etc.). The large number of searching tags will create a digital tool with much more detailed organisational criteria as the existing digital databases, where a part of the votive material from Apulum is already available (lupa.at, EDH, Clauss-Slaby). The digital catalogue will first include the stone and bronze monuments of the materiality of Roman religion in Apulum, followed later by other types of material (terracotta, small finds) too. On long-term, the project aims to create a comprehensive analysis of the

2019. Several publications of Radu Ota, Vasile Moga, Radu Ciobanu, Alexandru Popa, Ion Berciu and Cloșca L. Băluță are also essential in this regard.

⁶⁶ The complete number today is much larger. See: Kremer 2012, p. 27-312.

⁶⁷ Kremer 2012, p. 25-26 where the eight functional categories are presented.

⁶⁸ The MRRRA Database will be open access and available at the end of 2024 on the website: <https://mrraapulum.com/>

material in form of a CSIR monograph on the votive material of Apulum, as the first volume of the series from Romania⁶⁹.

I. Tituli sacri (votive and magical inscriptions)

Catalogue number	Bibliography	Description	Functional category
MRRA I.1.	IDR III/5, 1 = CIL III 972	Aesculapius	Statue base
MRRA I.2.	IDR III/5, 2 = CIL III 7739	Aesculapius	Statue base
MRRA I.3.	IDR III/5, 3	Aesculapius et Hygieia	Statue base
MRRA I.4	IDR III/5, 4 = CIL III 974	Aesculapius et Hygieia	Column
MRRA I.5	IDR III/5, 5 = CIL III 977	Aesculapius et Hygieia	Statue base
MRRA I.6	IDR III/5, 6 = CIL III 975	Aesculapius et Hygieia	Marble slab
MRRA I.7	IDR III/5, 7 = CIL III 976	Aesculapius et Hygieia	Marble slab
MRRA I. 8	IDR III/5, 8 = CIL III 978	Aesculapius et Hygieia	Statue base
MRRA I. 9	IDR III/5, 9 = CIL III 979	Aesculapius et Hygieia	Marble slab
MRRA I. 10	IDR III/5, 10 = CIL III 980	Aesculapius et Hygieia	Statue base
MRRA I. 11	IDR III/5, 11 = CIL III 981	Aesculapius et Hygieia	Statue base
MRRA I. 12	IDR III/5, 12 = CIL III 7740	Aesculapius et Hygieia	Limestone statue base
MRRA I. 13	IDR III/5, 13 = AE 1993, 1337	Aesculapius et Hygieia	-
MRRA I. 14	IDR III/5, 14 = CIL III 14468	Aesculapius et Hygieia	Limestone slab
MRRA I. 15	IDR III/5, 15 = CIL III 7740	Aesculapius et Hygieia	Statue base
MRRA I. 16	IDR III/5, 16 = CIL III 982	Aesculapius et Hygieia	Statue base

⁶⁹ See the website of the CSIR series: <https://www.corpusignororum.org/csir/guidelines>. The only volume focusing on figurative monuments of a Roman city from Dacia is the monograph on Sarmizegetusa: Alicu *et alii* 1979.

MRRA I. 17	IDR III/5, 17 = CIL III 12558	Aesculapius et Hygieia	Limestone slab
MRRA I. 18	IDR III/5, 18 = CIL III 984	Aesculapius et Hygieia	Statue base
MRRA I. 19	IDR III/5, 19 = CIL III 985	Aesculapius et Hygieia	Limestone statue base
MRRA I. 20	IDR III/5, 20 = CIL III 986	Aesculapius, Hygeia, Apollo, Diana	Statue base
MRRA I. 21	IDR III/5, 21 = CIL III 987	Aesculapius, Hygeia, Dii et Deae locis	Statue base?
MRRA I. 22	IDR III/5, 30 = CIL III 989	Apollo	Marble altar
MRRA I. 23	IDR III/5, 31 = CIL III 990	Apollo	Marble statue base
MRRA I. 24	IDR III/5, 32 = CIL III 14469	Apollo	Marble slab
MRRA I. 25	IDR III/5, 33 = CIL III 991	Apollo	Marble slab
MRRA I. 26	IDR III/5, 34 = AE 1972, 456	Apollo	Marble statue base
MRRA I. 27	IDR III/5, 699 = ILD I 456	Apollo	Limestone, altar or statue base
MRRA I. 28	IDR III/5, 35 = CIL III 14470	Apollo et Diana	Marble slab
MRRA I. 29	IDR III/5, 36 = AE 1980, 735	Apollo, Diana, Leto, Dii et Deae locis	Limestone construction slab
MRRA I. 30	IDR III/5, 51 = AE 1983, 807	Artemis	Limestone altar
MRRA I. 31	IDR III/5, 262 = CIL III 7766	Athena	Limestone altar
MRRA I. 32	IDR III/5, 37 = CIL III 14471	Badones reginae	Limestone altar
MRRA I. 33	IDR III/5, 38 = AE 1903, 58	Baltis	Limestone architrave
MRRA I. 34	IDR III/5, 300 = CIL III 1130	Bonus Puer	Altar or statue base
MRRA I. 35	IDR III/5, 301 = CIL III 1131	Bonus Puer	Marble altar or statue base
MRRA I. 36	IDR III/5, 302 = CIL III 1137	Bonus Puer	Altar or statue base
MRRA I. 37	IDR III/5, 303 = CIL	Bonus Puer	Altar or statue

	III 1132		base
MRRA I. 38	IDR III/5, 304 = CIL III 1135	Bonus Puer	Uncertain
MRRA I. 39	IDR III/5, 305 = CIL III 1136	Bonus Puer	Altar or statue base
MRRA I. 40	IDR III/5, 306 = CIL III 1133	Bonus Puer, Apollo Pythius	Limestone altar or statue base
MRRA I. 41	IDR III/5, 307 = CIL III 1138	Bonus Puer, Apollo Pythius	Statue base
MRRA I. 42	IDR III/5, 40 = CIL III 992	Caelestis	Limestone statue base
MRRA I. 43	IDR III/5, 41 = CIL III 993	Caelestis, Aesculapius, Genius Carthaginis et Genius Daciarum	Marble statue base
MRRA I. 44	IDR III/5, 42 = CIL III 994 = Sicoe 2014, 166, nr.54.	Cautes	Limestone statue base
MRRA I. 45	IDR III/5, 43 = CIL III 995	Daciiis tribus et Genius legionis XIII Geminae	Limestone statue base
MRRA I. 46	IDR III/5, 44 = CIL III 7747	Deae (?)	Limestone altar
MRRA I. 47	IDR III/5, 22 = CIL III 7738	Deus Aeternus	Doric marble marquee
MRRA I. 48	IDR III/5, 23 = CIL III 988	Deus Aeternus	Barrel of limestone column
MRRA I. 49	IDR III/5, 24 = CIL III 988, 2-3	Deus Aeternus	Barrels of limestone columns
MRRA I. 50	IDR III/5, 25 = AE 1947, 21	Deus Aeternus	Barrel of limestone column
MRRA I. 51	IDR III/5, 26 = CIL III 7737	Deus Aeternus	Barrel of limestone column
MRRA I. 52	IDR III/5, 27 = CIL III 7736	Deus Aeternus	Limestone altar
MRRA I. 53	IDR III/5, 28 = AE 1995, 1289	Deus Aeternus	Limestone statue base
MRRA I. 54	IDR III/5, 29 = AE 1947, 22	Deus Aeternus	Marble column barrel
MRRA I. 55	IDR III/5, 39 = CIL III 7748	Deus Bussumarius	Marble column barrel
MRRA I. 56	IDR III/5, 247 = AE 1995, 1290	Deus Magnus(?)/ Magusanus	Marble staue

MRRA I. 57	IDR III/5, 48 = AE 1977, 660	Diana	Limestone statue base
MRRA I. 58	IDR III/5, 49 = CIL III 997	Diana	-
MRRA I. 59	IDR III/5, 50 = CIL III 6259	Diana	Limestone statue base
MRRA I. 60	IDR III/5, 52 = AE 1944, 29	Diana	Marble slab
MRRA I. 61	IDR III/5, 53 = AE 1965, 31	Diana	Sandstone altar
MRRA I. 62	IDR III/5, 54 = CIL III 998	Diana	-
MRRA I. 63	IDR III/5, 55 = CIL III 999	Diana	Altar or statue base?
MRRA I. 64	IDR III/5, 56 = AE 1965, 32	Diana	Limestone altar
MRRA I. 65	IDR III/5, 57 = CIL III 1000	Diana	Altar or statue base?
MRRA I. 66	IDR III/5, 58 = CIL III 1001	Diana	Altar or statue base?
MRRA I. 67	IDR III/5, 59 = CIL III 12557	Diana	Limestone altar
MRRA I. 68	IDR III/5, 60 = CIL III 7742	Diana	Limestone altar or statue base?
MRRA I. 69	IDR III/5, 61 = AE 1930, 5	Diana	Limestone altar
MRRA I. 70	IDR III/5, 62 = CIL III 1002	Diana	Altar or statue base?
MRRA I. 71	IDR III/5, 63 = CIL III 1003	Diana	Altar or statue base?
MRRA I. 72	IDR III/5, 64 = CIL III 7743	Diana	Marble relief
MRRA I. 73	IDR III/5, 45 = CIL III 7746	Dii et Deae	Limestone altar
MRRA I. 74	IDR III/5, 46 = CIL III 996	Dii et Deae Daciarum, Terra (Mater?)	Sandstone statue base
MRRA I. 75	IDR III/5, 700	Dii patri	Limestone altar
MRRA I. 76	IDR III/5, 701	Dii patri	Limestone altar or statue base
MRRA I. 77	IDR III/5, 299 = AE 1956, 204	Diis Penatibus, Lares militares, Lares viales, Neptunus, Fortuna,	Limestone statue base

		Aesculapius, Diana, Apollo, Hercules, Spes, Favor	
MRRA I. 78	IDR III/5, 66 = CIL III 1005	Dominae	-
MRRA I. 79	IDR III/5, 65 = CIL III 1004	Dominus Aeternus	Limestone statue base
MRRA I. 80	IDR III/5, 67	Domus Divinae	Limestone altar
MRRA I. 81	IDR III/5, 68 = AE 1954, 258	Epona	Limestone statue base or altar?
MRRA I. 82	IDR III/5, 70 = CIL III 7750	Epona	Limestone altar or statue base?
MRRA I. 83	IDR III/5, 71	Epona	Limestone altar or statue base?
MRRA I. 84	IDR III/5, 72 = CIL III 1006	Fortuna	-
MRRA I. 85	IDR III/5, 73 = CIL III 1007	Fortuna	altar or statue base?
MRRA I. 86	IDR III/5, 75 = CIL III 1009	Fortuna	altar or statue base?
MRRA I. 87	IDR III/5, 76 = CIL III 1010	Fortuna	altar or statue base?
MRRA I. 88	IDR III/5, 77 = CIL III 1011	Fortuna	Limestone altar or statue base?
MRRA I. 89	IDR III/5, 78 = CIL III 1014	Fortuna	Limestone altar
MRRA I. 90	IDR III/5, 74 = CIL III 1008	Fortuna et Genius canabensium	altar or statue base?
MRRA I. 91	IDR III/5, 79 = CIL III 1015	Genius Centuriae	Limestone altar or statue base?
MRRA I. 92	IDR III/5, 80 = CIL III 1016	Genius Fabrum	Limestone altar
MRRA I. 93	IDR III/5, 81 = CIL III 1017	Genius Imperatoris Gordiani	Altar or statue base?
MRRA I. 94	IDR III/5, 82 = CIL III 1012	Genius legionis XIII Geminae	Altar or statue base?
MRRA I. 95	IDR III/5, 83 = CIL III 1018	Genius loci et Fortuna	Limestone altar or statue base?
MRRA I. 96	IDR III/5, 84 = CIL III 1019	Genius praetorii	Altar or statue base?
MRRA I. 97	IDR III/5, 702	Genius publici portorii	Limestone statue base

MRRA I. 98	IDR III/5, 85 = CIL III 1021	Glycon	Limestone altar
MRRA I. 99	IDR III/5, 86 = CIL III 1022	Glycon	Altar or statue base?
MRRA I. 100	IDR III/5, 355 = CIL III 7781	Helios	Marble altar
MRRA I. 101	IDR III/5, 87 = CIL III 1023	Hercules	-
MRRA I. 102	IDR III/5, 88 = CIL III 7752	Hercules	Altar or statue base?
MRRA I. 103	IDR III/5, 89 = AE 1991, 1342	Hercules	Limestone column
MRRA I. 104	IDR III/5, 90	Hercules	Limestone altar or statue base?
MRRA I. 105	IDR III/5, 91	Hercules	Limestone altar
MRRA I. 106	IDR III/5, 92 = CIL III 1024	Hercules	Marble altar or statue base
MRRA I. 107	IDR III/5, 93 = CIL III 1025	Hercules	Altar or statue base?
MRRA I. 108	IDR III/5, 94 = CIL III 7751	Hercules	Limestone altar
MRRA I. 109	IDR III/5, 95	Hercules	Limestone altar
MRRA I. 110	IDR III/5, 96 = CIL III 1026	Hercules	Altar or statue base?
MRRA I. 111	IDR III/5, 97 = CIL III 1027	Hercules	Limestone altar or statue base?
MRRA I. 112	IDR III/5, 98 = AE 1993, 1338	Hercules	Limestone altar or statue base?
MRRA I. 113	IDR III/5, 99 = CIL III 1029	Hercules	Marble altar
MRRA I. 114	IDR III/5, 100 = CIL III 1028	Hercules	Limestone statue base
MRRA I. 115	IDR III/5, 101	Hercules	Limestone statue
MRRA I. 116	IDR III/5, 356 = CIL III 1114	Invictus	Altar or statue base
MRRA I. 117	IDR III/5, 357 = CIL III 14475	Invictus	Limestone statue fragment
MRRA I. 118	IDR III/5, 104	Isis	Limestone altar
MRRA I. 119	IDR III/5, 105 = CIL III 1597	Iuno	Altar or statue base?
MRRA I. 120	IDR III/5, 106 = CIL III 1030	Iuno	Altar or statue base?
MRRA I. 121	IDR III/5, 107 = CIL III 1075	Iuno	Limestone altar

MRRA I. 122	IDR III/5, 108 = CIL III 7753	Iuno	-
MRRA I. 123	IDR III/5, 111 = CIL III 1031	Jupiter	Marble altar or statue base
MRRA I. 124	IDR III/5, 112 = CIL III 1032	Jupiter	-
MRRA I. 125	IDR III/5, 206 = CIL III 14215	Jupiter Bussumarius	Marble slab
MRRA I. 126	IDR III/5, 113 = CIL III 1033	Jupiter Bussumarus	Limestone column barrel
MRRA I. 127	IDR III/5, 109	Jupiter Depulsor	Limestone altar
MRRA I. 128	IDR III/5, 110 = AE 1960, 241	Jupiter Depulsor	Limestone statue base
MRRA I. 129	IDR III/5, 705	Jupiter fulgerator	Limestone altar
MRRA I. 130	IDR III/5, 114 = CIL III 7759	Jupiter Optimus Maximus	Altar
MRRA I. 131	IDR III/5, 115 = AE 1986, 710	Jupiter Optimus Maximus	Altar or statue base?
MRRA I. 132	IDR III/5, 116 = AE 1965, 222	Jupiter Optimus Maximus	Sandstone pedestal
MRRA I. 133	IDR III/5, 117 = AE 1986, 611	Jupiter Optimus Maximus	Limestone column barrel
MRRA I. 134	IDR III/5, 118	Jupiter Optimus Maximus	Limestone altar or statue base?
MRRA I. 135	IDR III/5, 119 = AE 1986, 613	Jupiter Optimus Maximus	Limestone monument
MRRA I. 136	IDR III/5, 120 = AE 1986, 612	Jupiter Optimus Maximus	Limestone altar or statue base?
MRRA I. 137	IDR III/5, 122 = CIL III 7758	Jupiter Optimus Maximus	Limestone altar or statue base?
MRRA I. 138	IDR III/5, 123 = CIL III 6262	Jupiter Optimus Maximus	Altar or statue base?
MRRA I. 139	IDR III/5, 124 = CIL III 1034	Jupiter Optimus Maximus	Limestone altar or statue base?
MRRA I. 140	IDR III/5, 125 = CIL III 1035	Jupiter Optimus Maximus	Altar or statue base?
MRRA I. 141	IDR III/5, 126 = CIL III 1036	Jupiter Optimus Maximus	Altar or statue base?
MRRA I. 142	IDR III/5, 127	Jupiter Optimus Maximus	Limestone altar or statue base?
MRRA I. 143	IDR III/5, 128 = CIL III 7788	Jupiter Optimus Maximus	Limestone altar or statue base?
MRRA I. 144	IDR III/5, 129 = AE	Jupiter Optimus	Limestone altar

	1991, 1338	Maximus	
MRRA I. 145	IDR III/5, 130	Jupiter Optimus Maximus	
MRRA I. 146	IDR III/5, 131	Jupiter Optimus Maximus	
MRRA I. 147	IDR III/5, 132	Jupiter Optimus Maximus	Limestone statue base
MRRA I. 148	IDR III/5, 133 = CIL III 1037	Jupiter Optimus Maximus	Altar or statue base?
MRRA I. 149	IDR III/5, 134 = CIL III 1038	Jupiter Optimus Maximus	Limestone statue base
MRRA I. 150	IDR III/5, 135	Jupiter Optimus Maximus	Limestone altar or statue base?
MRRA I. 151	IDR III/5, 136 = CIL III 7756	Jupiter Optimus Maximus	Limestone column barrel
MRRA I. 152	IDR III/5, 137 = AE 1983, 801	Jupiter Optimus Maximus	Limestone altar or statue base?
MRRA I. 153	IDR III/5, 138 = CIL III 1039 = 7755	Jupiter Optimus Maximus	Limestone altar or statue base?
MRRA I. 154	IDR III/5, 139 = CIL III 1034	Jupiter Optimus Maximus	Limestone altar
MRRA I. 155	IDR III/5, 140 = AE 1960, 239	Jupiter Optimus Maximus	Limestone altar
MRRA I. 156	IDR III/5, 141 = AE 1960, 240	Jupiter Optimus Maximus	Limestone altar
MRRA I. 157	IDR III/5, 142 = CIL III 1040	Jupiter Optimus Maximus	Altar or statue base?
MRRA I. 158	IDR III/5, 143 = CIL III 1041	Jupiter Optimus Maximus	Limestone altar or statue base?
MRRA I. 159	IDR III/5, 144 = AE 1944, 30	Jupiter Optimus Maximus	Limestone altar or statue base?
MRRA I. 160	IDR III/5, 145 = CIL III 1042	Jupiter Optimus Maximus	Limestone column barrel
MRRA I. 161	IDR III/5, 146	Jupiter Optimus Maximus	Limestone altar
MRRA I. 162	IDR III/5, 147 = CIL III 1043	Jupiter Optimus Maximus	Limestone altar or statue base?
MRRA I. 163	IDR III/5, 148 = CIL III 1044	Jupiter Optimus Maximus	Limestone altar
MRRA I. 164	IDR III/5, 149 = CIL III 14472	Jupiter Optimus Maximus	Limestone altar or statue base?
MRRA I. 165	IDR III/5, 150	Jupiter Optimus	Limestone altar

		Maximus	
MRRA I. 166	IDR III/5, 151 = CIL III 7757	Jupiter Optimus Maximus	Limestone altar
MRRA I. 167	IDR III/5, 152 = CIL III 1045	Jupiter Optimus Maximus	-
MRRA I. 168	IDR III/5, 153	Jupiter Optimus Maximus	Marble slab
MRRA I. 169	IDR III/5, 154 = CIL III 1046	Jupiter Optimus Maximus	Altar or statue base
MRRA I. 170	IDR III/5, 155 = CIL III 1047	Jupiter Optimus Maximus	-
MRRA I. 171	IDR III/5, 156 = AE 1983, 809	Jupiter Optimus Maximus	Limestone statue base
MRRA I. 172	IDR III/5, 157 = AE 1985, 606	Jupiter Optimus Maximus	Limestone altar
MRRA I. 173	IDR III/5, 158 = CIL III 14473	Jupiter Optimus Maximus	Limestone altar or statue base?
MRRA I. 174	IDR III/5, 159 = CIL III 1048	Jupiter Optimus Maximus	Altar or statue base?
MRRA I. 175	IDR III/5, 160 = CIL III 983	Jupiter Optimus Maximus	Altar or statue base?
MRRA I. 176	IDR III/5, 161 = CIL III 1049	Jupiter Optimus Maximus	Statue base
MRRA I. 177	IDR III/5, 162 = CIL III 1613	Jupiter Optimus Maximus	Limestone altar
MRRA I. 178	IDR III/5, 163 = CIL III 1050	Jupiter Optimus Maximus	Sandstone altar or statue base?
MRRA I. 179	IDR III/6, 164 = CIL III 1051	Jupiter Optimus Maximus	Limestone column barrel
MRRA I. 180	IDR III/5, 165 = CIL III 1052 = 13772	Jupiter Optimus Maximus	Relief
MRRA I. 181	IDR III/5, 166 = AE 1977, 653	Jupiter Optimus Maximus	Limestone altar or statue base?
MRRA I. 182	IDR III/5, 167 = CIL III 6260	Jupiter Optimus Maximus	Limestone altar
MRRA I. 183	IDR III/5, 168 = CIL III 6261	Jupiter Optimus Maximus	Altar
MRRA I. 184	IDR III/5, 169 = CIL III 1053	Jupiter Optimus Maximus	-
MRRA I. 185	IDR III/5, 170 = AE 1983, 808	Jupiter Optimus Maximus	Limestone statue base
MRRA I. 186	IDR III/5, 171 = CIL III 1054	Jupiter Optimus Maximus	Altar or statue base
MRRA I. 187	IDR III/5, 172 = CIL	Jupiter Optimus	Limestone altar

	III 1055	Maximus	or statue base?
MRRA I. 188	IDR III/5, 173 = CIL III 1056	Jupiter Optimus Maximus	Limestone altar or statue base?
MRRA I. 189	IDR III/5, 174 = CIL III 7754	Jupiter Optimus Maximus	Altar or column?
MRRA I. 190	IDR III/5, 175 = AE 1991, 1339	Jupiter Optimus Maximus	Altar
MRRA I. 191	IDR III/5, 176 = CIL III 1057	Jupiter Optimus Maximus	Altar or statue base
MRRA I. 192	IDR III/5, 177 = CIL III 1058	Jupiter Optimus Maximus	-
MRRA I. 193	IDR III/5, 178 = CIL III 1059	Jupiter Optimus Maximus	Limestone altar or statue base?
MRRA I. 194	IDR III/5, 179	Jupiter Optimus Maximus	Limestone altar or statue base?
MRRA I. 195	IDR III/5, 180	Jupiter Optimus Maximus	Limestone altar or statue base?
MRRA I. 196	IDR III/5, 224 = AE 1978, 664	Jupiter Optimus Maximus	Limestone altar
MRRA I. 197	IDR III/5, 703	Jupiter Optimus Maximus	Statue base
MRRA I. 198	IDR III/5, 203 = CIL III 1082	Jupiter Optimus Maximus Aeternus	Limestone altar or statue base?
MRRA I. 199	IDR III/5, 204 = CIL III 1083	Jupiter Optimus Maximus Aeternus	-
MRRA I. 200	IDR III/5, 181 = CIL III 1066	Jupiter Optimus Maximus and all the gods	Limestone slab
MRRA I. 201	IDR III/5, 182 = CIL III 1062	Jupiter Optimus Maximus and all the gods	Altar or statue base?
MRRA I. 202	IDR III/5, 183 = CIL III 1060	Jupiter Optimus Maximus and all the gods	Sandstone altar
MRRA I. 203	IDR III/5, 185 = CIL III 1061	Jupiter Optimus Maximus and all the gods	Marble statue base
MRRA I. 204	IDR III/5, 186 = CIL III 1064	Jupiter Optimus Maximus and all the gods	Altar or statue base?
MRRA I. 205	IDR III/5, 208 = AE 1961, 186	Jupiter Optimus Maximus Cimistenus	Limestone statue base
MRRA I. 206	IDR III/5, 209 = AE	Jupiter Optimus	Limestone altar

	1964, 185	Maximus Cimistenus	or statue base?
MRRA I. 207	IDR III/5, 210 = AE 1969, 304	Jupiter Optimus Maximus Conservator	Limestone column base
MRRA I. 208	IDR III/5, 211 = CIL III 1084	Jupiter Optimus Maximus Conservator	Altar or statue base?
MRRA I. 209	IDR III/5, 212 = CIL III 1085	Jupiter Optimus Maximus Conservator	Altar or statue base?
MRRA I. 210	IDR III/5, 213 = CIL III 1020	Jupiter Optimus Maximus Conservator	Altar or statue base?
MRRA I. 211	IDR III/5, 704	Jupiter Optimus Maximus custodis	Limestone altar or statue base
MRRA I. 212	IDR III/5, 214	Jupiter Optimus Maximus Custos	Limestone altar or statue base?
MRRA I. 213	IDR III/5, 215 = AE 1930, 7	Jupiter Optimus Maximus Custos, Iuno, Minerva, all the gods	Limestone statue base
MRRA I. 214	IDR III/5, 216 = CIL III, 1086	Jupiter Optimus Maximus divus fulgurialis	Altar or statue base
MRRA I. 215	IDR III/5, 217 = CIL III 7760	Jupiter Optimus Maximus Dolichenus	Marble slab
MRRA I. 216	IDR III/5, 218 = CIL III 7761	Jupiter Optimus Maximus Dolichenus	Marble column barrel
MRRA I. 217	IDR III/5, 219 = AE 1994, 1490	Jupiter Optimus Maximus Dolichenus	Limestone slab or statue base?
MRRA I. 218	IDR III/5, 220 = CIL III 1614 = 8044	Jupiter Optimus Maximus Dolichenus	Altar or statue base
MRRA I. 219	IDR III/5, 222 = CIL III 1128	Jupiter Optimus Maximus Dolichenus	Slab?
MRRA I. 220	IDR III/5, 221 = AE 1965, 30 = 1972, 460 = 1975, 719	Jupiter Optimus Maximus Dolichenus, Dea Suria Magna	Sandstone altar or statue base

		Caelestis	
MRRA I. 221	IDR III/5, 223 = CIL III 7791	Jupiter Optimus Maximus Dolichenus/ Deus Commagenus	Limestone altar or statue base?
MRRA I. 222	IDR III/5, 723 = ILD 455	Jupiter Optimus Maximus et Genius Daciarum	Limestone altar or statue base
MRRA I. 223	IDR III/5, 225 = AE 1961, 82	Jupiter Optimus Maximus Sabasius	Limestone slab
MRRA I. 224	IDR III/5, 226 = CIL III 1087	Jupiter Optimus Maximus Stator	Altar or statue base?
MRRA I. 225	IDR III/5, 227 = AE 1980, 748	Jupiter Optimus Maximus Tavianus	Limestone altar or statue base?
MRRA I. 226	IDR III/5, 228 = CIL III 1088	Jupiter Optimus Maximus Tavianus, Dii et Deae	Altar or statue base?
MRRA I. 227	IDR III/5, 184 = CIL III 1063	Jupiter Optimus Maximus, all the gods and Dacia	Limestone statue base
MRRA I. 228	IDR III/5, 187 = AE 1934, 12	Jupiter Optimus Maximus, Dii et Deae paternis	Limestone altar or statue base?
MRRA I. 229	IDR III/5, 202 = CIL III 1081	Jupiter Optimus Maximus, Diis penetibus	Marble altar or statue base?
MRRA I. 230	IDR III/5, 188 = CIL III 1067	Jupiter Optimus Maximus, Iuno	Column barrel
MRRA I. 231	IDR III/5, 189	Jupiter Optimus Maximus, Iuno	Limestone statue base
MRRA I. 232	IDR III/5, 190 = CIL III 1068	Jupiter Optimus Maximus, Iuno	Statuary group base
MRRA I. 233	IDR III/5, 191 = CIL III 1069	Jupiter Optimus Maximus, Iuno	Column barrel
MRRA I. 234	IDR III/5, 192	Jupiter Optimus Maximus, Iuno	Limestone altar
MRRA I. 235	IDR III/5, 193 = CIL III 1070	Jupiter Optimus Maximus, Iuno	Slab ?
MRRA I. 236	IDR III/5, 194 = CIL III 7763	Jupiter Optimus Maximus, Iuno, Genius loci	Limestone slab
MRRA I. 237	IDR III/5, 195 = CIL III 1071	Jupiter Optimus Maximus, Iuno, Minerva	Limestone altar or statue base?

MRRA I. 238	IDR III/5, 196 = CIL III 1073	Jupiter Optimus Maximus, Iuno, Minerva	-
MRRA I. 239	IDR III/5, 197 = CIL III 1077 = 7764	Jupiter Optimus Maximus, Iuno, Minerva	Altar or statue base?
MRRA I. 240	IDR III/5, 198 = CIL III 1078	Jupiter Optimus Maximus, Iuno, Minerva	Column barrel?
MRRA I. 241	IDR III/5, 199 = CIL III 1079	Jupiter Optimus Maximus, Iuno, Minerva, Aesculapius	Limestone altar or statue base?
MRRA I. 242	IDR III/5, 200 = AE 1930, 9	Jupiter Optimus Maximus, Liber pater, Mercurius pater	Limestone altar or statue base?
MRRA I. 243	IDR III/5, 201 = CIL III 1080	Jupiter Optimus Maximus, Mars	Altar
MRRA I. 244	IDR III/5, 230 = CIL III 1089	Jupiter Stator	Altar or statue base?
MRRA I. 245	IDR III/5, 231 = CIL III 1090	Jupiter Summus exsuperantissimus	Altar or statue base?
MRRA I. 246	IDR III/5, 232 = AE 1944, 28	Jupiter Victor, Jupiter Depulsor	Limestone altar or statue base?
MRRA I. 247	IDR III/5, 233 = CIL III 1091	Liber Pater	Altar or statue base?
MRRA I. 248	IDR III/5, 234	Liber Pater	Marble statue base
MRRA I. 249	IDR III/5, 235 = CIL III 1092	Liber Pater	Limestone statue base
MRRA I. 250	IDR III/5, 236	Liber Pater	Marble slab
MRRA I. 251	IDR III/5, 237	Liber Pater	Marble statue
MRRA I. 252	IDR III/5, 238 = CIL III 1065	Liber Pater	-
MRRA I. 253	IDR III/5, 239 = AE 1903, 59	Liber Pater	Marble statue
MRRA I. 254	IDR III/5, 242 = CIL III 1096	Liber Pater	Marble slab
MRRA I. 255	IDR III/5, 243 = CIL III 1094 = 7765	Liber Pater	Limestone altar or statue base?
MRRA I. 256	IDR III/5, 244	Liber Pater	Marble slab
MRRA I. 257	IDR III/5, 245 = CIL III 7789	Liber Pater	Marble relief

MRRA I. 258	IDR III/5, 373 = CIL III 1168	Liber Pater (?)	Marble relief base
MRRA I. 259	IDR III/5, 240 = CIL III 1093	Liber Pater et Libera	Limestone altar or statue base?
MRRA I. 260	IDR III/5, 241 = CIL III 1095	Liber Pater et Libera	Marble slab
MRRA I. 261	IDR III/5, 246 = CIL III 1097	Luna lucifera	Limestone slab
MRRA I. 262	IDR III/5, 253	Magna deum Mater	Slab
MRRA I. 263	IDR III/5, 254 = CIL III 1101	Magna deum Mater	Altar or statue base?
MRRA I. 264	IDR III/5, 255 = CIL III 1102	Magna deum Mater	Altar or statue base?
MRRA I. 265	IDR III/5, 252 = AE 1980, 737	Magna deum Mater (Cybele)	Limestone statue base
MRRA I. 266	IDR III/5, 256 = CIL III 7766	Magna Mater-Troklimene	Limestone altar
MRRA I. 267	IDR III/5, 707 = ILD I 459	Mars	Limestone altar or statue base
MRRA I. 268	IDR III/5, 250 = CIL III 1099	Mars Conservator	Altar or statue base?
MRRA I. 269	IDR III/5, 248 = CIL III 1098, 1	Mars et Victoria	Limestone statue base
MRRA I. 270	IDR III/5, 249 = CIL III 1098, 2	Mars et Victoria	Limestone statue base
MRRA I. 271	IDR III/5, 251 = CIL III 1600	Mars Pater et Consevator, bona Victoria	Marble altar or statue base?
MRRA I. 272	IDR III/5, 257 = CIL III 1598	Mercurius	Limestone altar or statue base?
MRRA I. 273	IDR III/5, 258 = CIL III 1103	Mercurius	Altar or statue base?
MRRA I. 274	IDR III/5, 708	Mercurius	Limestone altar
MRRA I. 275	IDR III/5, 259 = CIL III 1104	Minerva	Altar or statue base?
MRRA I. 276	IDR III/5, 261 = CIL III 1105	Minerva	Limestone altar
MRRA I. 277	IDR III/5, 263 = AE 1964, 63	Minerva	Limestone altar
MRRA I. 278	IDR III/5, 264 = CIL III 1106	Minerva	Altar or statue base?
MRRA I. 279	IDR III/5, 266 = CIL III 14215, 16	Minerva	Statue base

MRRA I. 280	IDR III/5, 260 = CIL III 1076	Minerva Iovis consiliorum participi	Limestone altar
MRRA I. 281	IDR III/5, 265 = AE 1975, 718	Minerva Supera	Limestone altar
MRRA I. 282	IDR III/5, 267 = CIL III 7782	Mithras	Marble relief
MRRA I. 283	IDR III/5, 268 = CIL III 7779 = Sicoe 2014, p. 149, nr. 25	Mithras	Limestone altar
MRRA I. 284	IDR III/5, 269 = CIL III 7780 = Sicoe 2014, p. 149, nr. 24	Mithras	Limestone altar or statue base?
MRRA I. 285	IDR III/5, 270 = Sicoe 2014, p. 154, nr. 33	Mithras	Limestone altar or statue base?
MRRA I. 286	IDR III/5, 271 = AE 1934, 114 = Sicoe 2014, p. 151-152, nr. 30	Mithras	Marble relief
MRRA I. 287	IDR III/5, 272 = CIL III 1112 = Sicoe 2014, p. 150, nr. 26	Mithras	Limestone altar
MRRA I. 288	IDR III/5, 273 = CIL III 1113 = Sicoe 2014, p. 148, nr. 21	Mithras	Limestone statue base
MRRA I. 289	IDR III/5, 274 = CIL III 1120 = Sicoe 2014, p. 159, nr. 41	Mithras	Marble relief
MRRA I. 290	IDR III/5, 275 = CIL III 1119	Mithras	Slab?
MRRA I. 291	IDR III/5, 276 = AE 1960, 376	Mithras	Limestone stele
MRRA I. 292	IDR III/5, 277 = CIL III 7777 = Sicoe 2014, p. 149, nr. 23	Mithras	Altar or statue base
MRRA I. 293	IDR III/5, 278 = Sicoe 2014, p. 162, nr. 45	Mithras	Marble relief
MRRA I. 294	IDR III/5, 279 = Sicoe 2014, p. 156, nr. 38	Mithras	Limestone monument base
MRRA I. 295	IDR III/5, 280 = CIL III 1109 = Sicoe	Mithras	Marble relief

	2014, p. 147, nr. 17		
MRRA I. 296	IDR III/5, 281 = CIL III 1110 = Sicoe 2014, p. 148, nr. 20	Mithras	Marble statue base
MRRA I. 297	IDR III/5, 282 = Sicoe 2014, p. 155, nr. 35	Mithras	Limestone statue base
MRRA I. 298	IDR III/5, 283 = CIL III 7776 = Sicoe 2014, p. 165, nr. 52	Mithras	Limestone altar or statue base
MRRA I. 299	IDR III/5, 284 = CIL III 1123 = Sicoe 2014, p. 145, nr. 16	Mithras	Marble statue
MRRA I. 300	IDR III/5, 285 = CIL III 1121 = Sicoe 2014, p. 163, nr. 47	Mithras	Relief
MRRA I. 301	IDR III/5, 286 = CIL III 1122 = Sicoe 2014, p. 164, nr. 51	Mithras	Altar or statue base
MRRA I. 302	IDR III/5, 288 = Sicoe 2014, p. 155, nr. 36	Mithras	Limestone altar or statue base
MRRA I. 303	IDR III/5, 289 = Sicoe 2014, p. 155, nr. 37	Mithras	Limestone statue base
MRRA I. 304	IDR III/5, 290 = Sicoe 2014, p. 151, nr. 29	Mithras	Marble relief
MRRA I. 305	IDR III/5, 291 = Sicoe 2014, p. 162, nr. 44	Mithras	Marble relief
MRRA I. 306	IDR III/5, 292 = CIL III 7778 = Sicoe 2014, p. 165, nr. 54	Mithras	Limestone altar
MRRA I. 307	IDR III/5, 709 = Sicoe 2014, p. 165, nr. 53	Mithras	Limestone altar or statue base
MRRA I. 308	IDR III/5, 287 = Sicoe 2014, p. 154, nr. 34	Mithras (?)	Limestone altar or statue base
MRRA I. 309	IDR III/5, 720 = Sicoe 2014, p. 150, nr. 27	Mithras (?)	Limestone altar
MRRA I. 310	IDR III/5, 293 = CIL	Nemesis	Altar or statue

	III 1124		base
MRRA I. 311	IDR III/5, 295 = CIL III 14474	Nemesis	Limestone altar or statue base
MRRA I. 312	IDR III/5, 296 = CIL III 1126	Nemesis	Marble relief
MRRA I. 313	IDR III/5, 294 = CIL III 1125	Nemesis et Fortuna	Altar or statue base
MRRA I. 314	IDR III/5, 297 = AE 1930, 6	Nemesis Regina	Limestone statue
MRRA I. 315	IDR III/5, 427	Numen	Marble statue base
MRRA I. 316	IDR III/5, 430	Numen augusti	Marble slab
MRRA I. 317	IDR III/5, 298 = CIL III 1129	Nymphae	Limestone altar or statue base
MRRA I. 318	IDR III/5, 452	Possible album	Limestone slab
MRRA I. 319	IDR III/5, 308 = CIL III 1139	Priapus Pantheus	Statue base
MRRA I. 320	IDR III/5, 309 = AE 1947, 24	Quadriviae	Limestone altar
MRRA I. 321	IDR III/5, 310 = CIL III 1140	Quadriviae	Limestone altar or statue base
MRRA I. 322	IDR III/5, 311	Quadriviae	Limestone statue base
MRRA I. 323	IDR III/5, 314 = AE 1975, 718	Saturnus	Limestone altar
MRRA I. 324	IDR III/5, 315 = CIL III 7769	Serapis	Uncertain
MRRA I. 325	IDR III/5, 316 = CIL III 973	Serapis	Uncertain
MRRA I. 326	IDR III/5, 317 = CIL III 7768	Serapis	Altar or statue base
MRRA I. 327	IDR III/5, 319 = CIL III 7771	Serapis – Jupiter – Sol, Isis – Luna – Diana and all the gods	Marble altar
MRRA I. 328	IDR III/5, 318 = CIL III 7770	Serapis et Isis	Limestone altar or statue base
MRRA I. 329	IDR III/5, 320 = CIL III 7772	Silvanus	Limestone altar or statue base
MRRA I. 330	IDR III/5, 321	Silvanus	Limestone altar
MRRA I. 331	IDR III/5, 322 = CIL III 1142	Silvanus	Altar or statue base
MRRA I. 332	IDR III/5, 323 = CIL III 1143	Silvanus	Limestone altar or statue base

MRRA I. 333	IDR III/5, 324 = AE 1944, 35	Silvanus	Limestone altar
MRRA I. 334	IDR III/5, 325 = AE 1986, 607	Silvanus	Altar or statue base
MRRA I. 335	IDR III/5, 326 = CIL III 1144	Silvanus	Limestone altar or statue base
MRRA I. 336	IDR III/5, 327 = AE 1960, 242	Silvanus	Limestone altar or statue base
MRRA I. 337	IDR III/5, 328 = CIL III 1145	Silvanus	Altar or statue base
MRRA I. 338	IDR III/5, 329	Silvanus	Marble relief
MRRA I. 339	IDR III/5, 330 = CIL III 1141	Silvanus	Altar or statue base
MRRA I. 340	IDR III/5, 331 = CIL III 1146	Silvanus	Limestone altar
MRRA I. 341	IDR III/5, 332 = CIL III 1148	Silvanus	Altar or statue base
MRRA I. 342	IDR III/5, 333 = AE 1986, 608	Silvanus	Limestone altar
MRRA I. 343	IDR III/5, 334 = CIL III 1147	Silvanus	Altar or statue base
MRRA I. 344	IDR III/5, 335 = AE 1965, 34 = 1972, 457 = 1978, 663 = 1988, 946	Silvanus	Limestone altar
MRRA I. 345	IDR III/5, 336 = CIL III 7774	Silvanus	Limestone altar or statue base
MRRA I. 346	IDR III/5, 337 = AE 1903, 60	Silvanus	Limestone tar or statue base
MRRA I. 347	IDR III/5, 338 = CIL III 1150	Silvanus	Altar or statue base
MRRA I. 348	IDR III/5, 339 = CIL III 7773	Silvanus	Limestone altar or statue base
MRRA I. 349	IDR III/5, 340 = CIL III, 1151	Silvanus	Altar or statue base
MRRA I. 350	IDR III/5, 342 = AE 1903, 61	Silvanus	Limestone altar or statue base
MRRA I. 351	IDR III/5, 343 = CIL III 1167	Silvanus	Limestone altar
MRRA I. 352	IDR III/5, 344 = CIL III 1152	Silvanus	
MRRA I. 353	IDR III/5, 345 = CIL III 1153	Silvanus	
MRRA I. 354	IDR III/5, 346 = AE	Silvanus	Uncertain

	1993, 1339		
MRRA I. 355	IDR III/5, 347 = AE 1977, 659	Silvanus	Limestone altar or statue base
MRRA I. 356	IDR III/5, 348 = CIL III 1155	Silvanus	Limestone monument
MRRA I. 357	IDR III/5, 710	Silvanus	Limestone altar or statue base
MRRA I. 358	IDR III/5, 341 = CIL III 7749	Silvanus (?)	Limestone slab
MRRA I. 359	IDR III/5, 349 = CIL III 1154 = 7775	Silvanus et Diana	Altar or statue base
MRRA I. 360	IDR III/5, 350 = CIL III 1118	Sol	Altar or statue base
MRRA I. 361	IDR III/5, 351 = AE 1944, 31	Sol	Limestone altar or statue base
MRRA I. 362	IDR III/5, 352 = CIL III 1107	Sol	Altar or statue base
MRRA I. 363	IDR III/5, 353 = CIL III 1013	Sol	Altar or statue base
MRRA I. 364	IDR III/5, 354 = CIL III 1111	Sol	Altar or statue base
MRRA I. 365	IDR III/5, 358 = AE 2015, 1177 = Wiegels 2014	Sol	Bronze statuette
MRRA I. 366	IDR III/5, 207 = AE 1944, 32	Sol Bussurigijs	Limestone statue base
MRRA I. 367	IDR III/5, 103 = CIL III 1108	Sol Yarhibol	Altar or statue base?
MRRA I. 368	IDR III/5, 359 = CIL III 1156	Suleviae	Altar or statue base
MRRA I. 369	IDR III/5, 360	Terra Mater	Limestone altar or statue base
MRRA I. 370	IDR III/5, 361 = CIL III 1599	Terra Mater	Altar or statue base
MRRA I. 371	IDR III/5, 370	Thracian Rider	Marble statuette
MRRA I. 372	IDR III/5, 362	Venus	Altar or statue base
MRRA I. 373	IDR III/5, 363 = CIL III 1157	Venus	Limestone statue base
MRRA I. 374	IDR III/5, 364 = CIL III 1115	Venus	Limestone statue base
MRRA I. 375	IDR III/5, 365 = CIL III 1072	Victoria	Limestone altar or statue base
MRRA I. 376	IDR III/5, 366 = CIL	Victoria	Limestone

	III 1158		
MRRA I. 377	IDR III/5, 369	Virtus	Altar or statue base
MRRA I. 378	IDR III/5, 367 = CIL III 1116	Virtus Romana	Altar or statue base
MRRA I. 379	IDR III/5, 368 = CIL III 1159	Virtus Romana et Genius Imperatoris	Altar or statue base
MRRA I. 380	IDR III/5, 102 = AE 1977, 661	Yarhibol	Limestone altar
MRRA I. 381	IDR III/5, 229 = CIL III 7762	Zeus Sardendenos	Limestone altar or statue base?
MRRA I. 382	IDR III/5, 706	Zeus Syrgastos	Limestone altar
MRRA I. 383	IDR III/5, 47	Uncertain divinity	
MRRA I. 384	IDR III/5, 205 = AE 1971, 369	Uncertain divinity	Sandstone slab
MRRA I. 385	IDR III/5, 312	Uncertain divinity	Limestone altar or statue base
MRRA I. 386	IDR III/5, 313 = CIL III 1161	Uncertain divinity	Uncertain
MRRA I. 387	IDR III/5, 374 = CIL III 12560	Uncertain divinity	Altar or statue base
MRRA I. 388	IDR III/5, 375 = CIL III 1160	Uncertain divinity	Altar or statue base
MRRA I. 389	IDR III/5, 376 = CIL III 7784	Uncertain divinity	Altar or statue base
MRRA I. 390	IDR III/5, 377 = AE 1980, 738	Uncertain divinity	Limestone altar or statue base
MRRA I. 391	IDR III/5, 378 = CIL III 1185	Uncertain divinity	Altar or statue base
MRRA I. 392	IDR III/5, 379 = CIL 7793	Uncertain divinity	Limestone altar
MRRA I. 393	IDR III/5, 380 = CIL III 7790	Uncertain divinity	Limestone column
MRRA I. 394	IDR III/5, 381 = CIL III 14476	Uncertain divinity	Marble statue base
MRRA I. 395	IDR III/5, 382 = CIL III 1220	Uncertain divinity	Uncertain
MRRA I. 396	IDR III/5, 383 = CIL III 7786	Uncertain divinity	Marble slab
MRRA I. 397	IDR III/5, 384	Uncertain divinity	Inscription fragment
MRRA I. 398	IDR III/5, 385 = CIL	Uncertain	Limestone statue

	III 1165	divinity	base
MRRA I. 399	IDR III/5, 386 = AE 1991, 1340	Uncertain divinity	Marble slab
MRRA I. 400	IDR III/5, 387	Uncertain divinity	Limestone altar or statue base
MRRA I. 401	IDR III/5, 388 = CIL III 1117	Uncertain divinity	Column
MRRA I. 402	IDR III/5, 389 = CIL III 7811	Uncertain divinity	Inscription
MRRA I. 403	IDR III/5, 390 = AE 1983, 806	Uncertain divinity	Limestone slab
MRRA I. 404	IDR III/5, 391 = CIL III 1166	Uncertain divinity	Limestone monument
MRRA I. 405	IDR III/5, 392	Uncertain divinity	Marble altar or statue base
MRRA I. 406	IDR III/5, 393	Uncertain divinity	Limestone statue base
MRRA I. 407	IDR III/5, 394	Uncertain divinity	Limestone slab
MRRA I. 408	IDR III/5, 395 = CIL III 14478	Uncertain divinity	Altar or statue base
MRRA I. 409	IDR III/5, 396	Uncertain divinity	Marble slab
MRRA I. 410	IDR III/5, 397 = CIL III 1162	Uncertain divinity	Column
MRRA I. 411	IDR III/5, 398 = CIL III 1164	Uncertain divinity	Altar or statue base
MRRA I. 412	IDR III/5, 399 = CIL III 1218	Uncertain divinity	Column
MRRA I. 413	IDR III/5, 400 = AE 1993, 1336	Uncertain divinity	Altar or statue base
MRRA I. 414	IDR III/5, 401 = CIL III 14477	Uncertain divinity	Limestone altar or statue base
MRRA I. 415	IDR III/5, 402 = CIL III 7785	Uncertain divinity	Inscription fragment
MRRA I. 416	IDR III/5, 403 = AE 1991, 1343	Uncertain divinity	Limestone slab?
MRRA I. 417	IDR III/5, 404 = CIL III 14483	Uncertain divinity	Marble slab
MRRA I. 418	IDR III/5, 405 = CIL III 7787	Uncertain divinity	Inscription fragment
MRRA I. 419	IDR III/5, 406	Uncertain divinity	Marble slab?
MRRA I.420	IDR III/5, 407 = CIL	Uncertain	Altar or statue

	III 7792	divinity	base
MRRA I.421	IDR III/5, 408	Uncertain divinity	Altar or statue base
MRRA I.422	IDR III/5, 409 = CIL III 1163	Uncertain divinity	Inscription fragment
MRRA I.423	IDR III/5, 410 = CIL III 1219	Uncertain divinity	Inscription fragment
MRRA I.424	IDR III/5, 411 = AE 1983, 805	Uncertain divinity	Marble slab
MRRA I.425	IDR III/5, 412 = CIL III 1259	Uncertain divinity	Marble slab
MRRA I.426	IDR III/5, 413	Uncertain divinity	Marble altar or statue base
MRRA I.427	IDR III/5, 414	Uncertain divinity	Limestone altar or statue base
MRRA I.428	IDR III/5, 415 = AE 1972, 459	Uncertain divinity	Altar or statue base
MRRA I.429	IDR III/5, 416	Uncertain divinity	Marble altar?
MRRA I.430	IDR III/5, 417	Uncertain divinity	Limestone column
MRRA I.431	IDR III/5, 418	Uncertain divinity	Limestone slab
MRRA I.432	IDR III/5, 419	Uncertain divinity	Limestone altar
MRRA I.433	IDR III/5, 423	Uncertain divinity	Column
MRRA I.434	IDR III/5, 425	Uncertain divinity	Marble slab
MRRA I.435	IDR III/5, 429	Uncertain divinity	Limestone monument
MRRA I.436	IDR III/5, 444	Uncertain divinity	Column
MRRA I.437	IDR III/5, 711	Uncertain divinity	Limestone altar or statue base
MRRA I.438	IDR III/5, 712	Uncertain divinity	Limestone altar or statue base
MRRA I.439	IDR III/5, 721	Uncertain divinity	Limestone altar or statue base
MRRA I.440	IDR III/5, 69	Uncertain divinity (perhaps Epona)	Limestone altar or statue base?
MRRA I.441	IDR III/5, 121	Uncertain divinity, perhaps	Marble altar or statue base?

		Jupiter Optimus Maximus	
MRRA I.442	IDR III/5, 372	Uncertain. Perhaps, a Syrian divinity	Limestone relief base
MRRA I.443	IDR III/5, 371	So-called Danubian Riders	Bronze tablet

	Addendum IDR III/5		
MRRA I.444	ILD II 929	Aquila	Statue base
MRRA I.445	Sicoe 2014, p. 148, nr. 22	Cautes	Statue
MRRA I.446	Egri <i>et alii</i> 2018, statue base D	Cautes	Statue base
MRRA I.447	Egri <i>et alii</i> 2018, statue base C	Cautopates	Statue base
MRRA I.448	Ota <i>et alii</i> 2018	Collegium veteranorum?	Altar/ statue base
MRRA I.449	Sicoe 2014, p. 150-151, nr. 28	Deus Invictus	Altar
MRRA I.450	Ota, Florescu 2017	Genius centuriae	Altar/ statue base
MRRA I.451	ILD II 930	Jupiter Optimus Maximus	Limestone altar
MRRA I.452	AE 2020, 1053	Jupiter Optimus Maximus	Sandstone altar
MRRA I.453	AE 2020, 1054	Jupiter Optimus Maximus	Sandstone altar
MRRA I.454	ILD II 937	Magic/ defixio	Lead plaque
MRRA I.455	Németh 2015, p. 395, cat. nr. 3.	Magic/ defixio	Lead plaque
MRRA I.456	ILD II 928	Mars	Marble relief
MRRA I.457	Lupa 23329 = Cupcea 2024	Mars	Sandstone altar
MRRA I.458	ILD I 457	Mars Toutatis	Altar
MRRA I.459	SEG-44, 00647a = CIGDac 00023	Men	Pottery fragment
MRRA I.460	Szabó <i>et alii</i> 2016a	Mithras	Votive column
MRRA I.461	Egri <i>et alii</i> 2018, altar A.	Mithras	Limestone altar
MRRA I.462	ILD II 927	Nemesis	Marble statuette
MRRA I.463	ILD II 926	Nemesis regina	Marble altar
MRRA I.464	AE 2020, 1049 = Cupcea <i>et alii</i> 2020, p.	Serapis	Marble altar

	115-118		
MRRA I.465	AE 2020, 1048 = Cupcea <i>et alii</i> 2020, p. 115-118	Serapis (et Isis?)	Marble building inscription
MRRA I.466	AE 2019, 1263	Silvanus Domesticus	Sandstone altar
MRRA I.467	ILD I 458	Terra Mater/ Aesculapius	Sandstone altar
MRRA I.468	Egri <i>et alii</i> 2018, statue base B	Transitus Dei (Mithras)	Limestone altar
MRRA I.469	Egri <i>et alii</i> 2018, fragment E	Uncertain	Limestone fragment (altar?)
MRRA I.470	ILD II 932	Uncertain divinity	Altar
MRRA I.471	ILD II 933	Uncertain divinity	Marble slab fragment
MRRA I.472	Lupa 23325	Uncertain divinity	Limestone altar fragment
MRRA I.473	Lupa 19373	Uncertain divinity	Sandstone altar
MRRA I.474	Lupa 19364	Uncertain divinity	Limestone altar

II. Uninscribed figurative material

II.1. Stone statues and statuettes

Catalogue number	Bibliography	Description	
MRRA II.1.1.	Ota 2005, p. 200, fig.1a-b	Aesculapius	Statue- fragment
MRRA II.1.2.	Ota 2005, p. 201, fig. 2a-b = Ota 2013, p. 72, fig. 53	Aesculapius	Head of a statue
MRRA II.1.3.	Almăjanu, Ota 2015, p. 275, fig. 2	Apollo	Head of a statue
MRRA II.1.4.	Lupa 19346 = Almăjanu, Ota 2015, p. 274, fig. 1	Apollo or Diana	Head of a statue
MRRA II.1.5.	Ota 2008, p. 195, fig. 3 = Almăjanu, Ota 2015, p. 276, fig. 3	Apollo or Liber Pater	Torso of a statue
MRRA II.1.6.	Pop, Milea 1965, fig. 5 = Almăjanu, Ota 2015, p. 264	Apollo or Liber Pater	Torso of a statue
MRRA II.1.7.	Ciobanu 2015, p. 255, fig. 2	Aquatic divinity	Statue
MRRA II.1.8.	Szabó 2015c, p. 238, fig. 1a-c and fig. 2a-b	Cautes	Torso of a statue

MARRA II.1.9.	Sicoe 2014, p. 153, nr. 31 = Szabó 2015c, p. 240, fig. 3	Cautes	Torso of a statue
MARRA II.1.10.	Szabó 2015c, p. 241 = CIMRM 2185	Cautes	Statue (lost or identical with MARRA II.1.8.)
MARRA II.1.11.	Lupa 19358 = Diaconescu 2005, pl. 62, fig. 2	Cautes or Cautopates	Head of a statue
MARRA II.1.12.	Lupa 23327 = Sicoe 2014, p. 153-154, nr. 32	Cautopates	Torso of a statue
MARRA II.1.13.	Ota 2008, p. 196, pl. 4b	Diana	Torso of a statue
MARRA II.1.14.	Lupa 19345 = Diaconescu 2005, p. 365, pl. 56.4	Fortuna	Statue without head
MARRA II.1.15.	Köppen 1823 = Lupa 17500	Hekate Triformis	Statue
MARRA II.1.16.	Ciută 2014	Hercules	Statue
MARRA II.1.17.	Ota 2006, p. 48, fig. 1a-c	Hercules	Statue
MARRA II.1.18.	Ciobanu <i>et alii</i> 2000, p. 318-319, nr. 3d, fig. 12	Hercules	Torso of a statue
MARRA II.1.19.	Ota <i>et alii</i> forthcoming ⁷⁰	Hygieia	Statue without head
MARRA II.1.20.	Ota, Totoianu 2009, p. 621	Hygieia (?)	Hand of a statue
MARRA II.1.21.	Lupa 21973 = Deac, Varga 2014	Isis	Statue without head
MARRA II.1.22.	Băluță 1980, p. 107, fig. 9a-c = Lupa 19423	Jupiter	Torso of a statue
MARRA II.1.23.	Băluță 1980, p. 107, fig. 12a-c = Lupa 19455	Jupiter	Fragment of a statue
MARRA II.1.24.	Mitrofan 1971, p. 332, nr. 3	Jupiter	Head of a statue
MARRA II.1.25.	Ota 2013, fig. 48	Jupiter	Head of a statue
MARRA II.1.26.	Ota, Totoianu 2009, p. 621	Jupiter	Fragment of a statue
MARRA II.1.27.	Ota, Totoianu 2009, p. 621	Jupiter	Fragment of a statue
MARRA	Lupa 19350 = Diaconescu	Jupiter Ammon	Head of a

70

<https://historia.ro/sectiune/timp-liber/statuia-de-cult-a-hygiei-de-la-apulum-restaurata-2332689.html>. Last accessed: 17.07.2024.

II.1.28.	2005, pl. 60, fig. 2	(?)	statue
MARRA II.1.29.	Lupa 19351 = Diaconescu 2005, pl. 60, fig. 1	Jupiter Bussumarius	Head of a statue
MARRA II.1.30.	Lupa 19221 = Timofan, Ota 2010	Jupiter or Aesculapius	Head of a statue
MARRA II.1.31.	Ota 2013, p. 67, fig. 49 = Lupa 19307	Jupiter or Aesculapius	Head of a statue
MARRA II.1.32.	Lupa 19357 = Diaconescu 2005, pl. 58, fig. 1	Jupiter or Aesculapius	Head of a statue
MARRA II.1.33.	Ota 2013, p. 74, fig. 55 = Lupa 15327	Jupiter tonans	statue
MARRA II.1.34.	Băluță 1980, p. 107, fig. 4a-b = Lupa 15326	Jupiter tronans	Statue without head
MARRA II.1.35.	Szabó 2015d = Lupa 17354	Jupiter tronans	Statue without head
MARRA II.1.36.	Băluță 1980, p. 107, fig. 13a-c = Lupa 19222	Jupiter tronans	Statue
MARRA II.1.37.	Băluță 1980, p. 107, fig. 10a- c= Lupa 19223	Jupiter tronans	Statue fragment
MARRA II.1.38.	Băluță 1980, p. 107, fig. 5a-b = Lupa 19246	Jupiter tronans	Statue without head
MARRA II.1.39.	Băluță 1980, p. 107, fig. 8a-c= Lupa 19299	Jupiter tronans	Statue
MARRA II.1.40.	Ota, Bounegru 2023	Jupiter tronans	Torso of a statue
MARRA II.1.41.	Băluță 1980, p. 107, fig. 2a-c= Ota 2013, p. 65, fig. 47	Jupiter tronans	Statue
MARRA II.1.42.	Daicoviciu 1941, p. 307, fig. 6	Jupiter tronans	Statue
MARRA II.1.43.	Băluță 1980, p. 107, fig. 11a- c.	Jupiter tronans	Statue without head
MARRA II.1.44.	Băluță 1980, p. 107, fig. 3a-b = Lupa 9791	Jupiter tronans	Statue
MARRA II.1.45.	Lupa 19338 = Popa 1982	Jupiter Zbelsurdos	Statue
MARRA II.1.46.	Ota, Totoianu 2009, p. 621	Jupiter(?)	Fragment of a statue
MARRA II.1.47.	Ota 2009, p. 166 = Lupa 19333	Liber et Libera	High relief fragment
MARRA II.1.48.	Lupa 19339 = Diaconescu 2001	Liber Pater	Statue
MARRA II.1.49.	Lupa 19340 = Diaconescu 2001	Liber Pater	Statue
MARRA	Lupa 19341 = Diaconescu	Liber Pater	Statue

II.1.50.	2001		
MARRA II.1.51.	Ota 2009, p. 167, fig. 5	Liber Pater	Fragments of high relief
MARRA II.1.52.	Ota 2009, p. 167, fig. 6	Liber Pater	Fragments of high relief
MARRA II.1.53.	Ota 2009, p. 167, fig. 7	Liber Pater	Fragments of high relief
MARRA II.1.54.		Liber Pater	High relief
MARRA II.1.55.	Ota 2017	Liber Pater	Fragment of a statue
MARRA II.1.56.	Diaconescu 2005, pl. LIII.3= Lupa 21971	Mercurius	Torso of a statue
MARRA II.1.57.	Ota 2011, p. 165, fig. 2	Minerva (?)	Fragment of a statue
MARRA II.1.58.	Lupa 17355 = Sicoe 2014, 243, nr. 224	Mithras petrogenitus	Statue
MARRA II.1.59.	Lupa 19257 = Sicoe 2014, p. 147, nr. 19	Mithras petrogenitus	Fragment of a statue
MARRA II.1.60.	Lupa 19312 = Sicoe 2014, p. 163, nr. 48	Mithras petrogenitus	Statue without head
MARRA II.1.61.	Lupa 19313 = Sicoe 2014, p. 164, nr. 49	Mithras petrogenitus	Statue without head
MARRA II.1.62.	CIMRM 2184 = Lupa 22046	Mithras petrogenitus	Statue
MARRA II.1.63.	Ota 2014	Pan	Head of a statue
MARRA II.1.64.	Lupa 19343	Panther / Bacchic	Fragment of a statue
MARRA II.1.65.	Lupa 19306 = Nemeti 2021, p. 140	Sucellus et Nantosuelta	Statue without heads
MARRA II.1.66.	Lupa 19224	Uncertain	Fragment of a statue
MARRA II.1.67.	Lupa 19347 = Antal 2016, p. 161, nr. 10	Venus	Torso of a statue
MARRA II.1.68.	Antal 2016, p. 159, nr. 4	Venus	Head of a statuette
MARRA II.1.69.	Antal 2016, p. 162, nr. 11	Venus	Statuette
MARRA II.1.70.	Antal 2016, p. 160, nr. 5	Venus	Head of a statuette
MARRA II.1.71.	Antal 2016, p. 160, nr. 6	Venus	Torso of a statue

MARRA II.1.72.	Ota 2011, p. 165, I.a. = Antal 2016, p. 160, nr. 8	Venus	Fragment of a statue
MARRA II.1.73.	Mitrofan 1971, p. 332, nr. 2 = Antal 2016, p. 161, nr. 9	Venus/ Eros	Fragment of a statue
MARRA II.1.74.		Uncertain divinity	Head of a statue
MARRA II.1.75.	Lupa 19348	Uncertain divinity (Iuno?)	Head of a statue
MARRA II.1.76.	Lupa 19360	Uncertain divinity (Nemesis?)	Head of a statue
MARRA II.1.77.		Uncertain divinity	Head of a statue
MARRA II.1.78.		Uncertain divinity	Fragment of a statue
MARRA II.1.79.	Diaconescu 2005, pl. 60, fig. 3	Uncertain divinity (Jupiter?)	Head of a statue
MARRA II.1.80.		Uncertain divinity (Pan?)	Fragment of a statue
MARRA II.1.81.	Ota 2011, p. 165, fig. 3	Unknown divinity	Fragment of a statue
MARRA II.1.82.	Ota 2008, p. 196, pl. 4a	Unknown divinity	Fragment of a statue
MARRA II.1.83.	Ota 2008, p. 194, pl. 2a	Unknown divinity	Fragment of a statue
MARRA II.1.84.	Ota 2008, p. 194, pl. 2b	Unknown divinity	Fragment of a statue
MARRA II.1.85.	Ota 2008, p. 194, pl. 2c	Unknown divinity	Fragment of a statue
MARRA II.1.86.	Ota 2008, p. 194, pl. 2d	Unknown divinity	Fragment of a statue
MARRA II.1.87.	Ota 2008, p. 194, pl. 2e	Unknown divinity	Fragment of a statue
MARRA II.1.88.	Ota 2008, p. 194, pl. 2f	Unknown divinity	Fragment of a statue
MARRA II.1.89.	Wollmann 1977, p. 674, II	Unknown divinity (Iuno?)	Statue without head
MARRA II.1.90.	Wollmann 1977, p. 674, II	Unknown divinity (Jupiter tronans?)	Statue without head

II.2. Stone reliefs

Catalogue number	Bibliography	Description	
MRRA II.2.1.	CCET IV, nr. 139	Apollo and Thracian Rider	Relief fragment
MRRA II.2.2.	Băluță 1976, p. 145, fig. 5 = Lupa 19325	Brigantia	Relief
MRRA II.2.3.	Lupa 19328 = CMRED I, nr. 6	Danubian Rider	Relief
MRRA II.2.4.	Lupa 17455 = CMRED I, nr. 1	Danubian Rider	Relief
MRRA II.2.5.	CMRED I., nr. 4	Danubian Rider	Relief fragment
MRRA II.2.6.	CMRED I. nr. 2	Danubian Rider	Relief fragment
MRRA II.2.7.	CMRED I, nr. 7 = Mitrofan 1971, p. 332, nr. 1	Danubian Rider	Relief
MRRA II.2.8.	CMRED I, nr. 5	Danubian Rider	Relief fragment
MRRA II.2.9.	CMRED I, nr. 3	Danubian Rider	Round relief
MRRA II.2.10.	Lupa 19225	Diana	Altar relief
MRRA II.2.11.	Lupa 19337	Diana	Relief
MRRA II.2.12.	Lupa 19344 = Ota, Lascu 2011, p. 223	Diana	Relief fragment
MRRA II.2.13.	Băluță 1976, p. 134, fig. 1	Diana (?)	Relief fragment
MRRA II.2.14.	Lupa 19332 = Zefleanu 1949, p. 173	Genius	Relief
MRRA II.2.15.	Băluță 1976, p. 134, fig. 2 = Lupa 19336	Hercules	Relief fragment
MRRA II.2.16.	Băluță 1976, p. 135, fig. 2 = Ota 2013, p. 76	Jupiter and Iuno	Relief fragment
MRRA II.2.17.	Antal 2016, p. 162, nr. 12	Liber Pater/ Venus	High relief fragment
MRRA II.2.18.	Ota 2009, p. 166, fig. 1 = Lupa 19326	Liber Pater/Pan	Relief
MRRA II.2.19.	Lupa 19334 = Ota, Buta 2022, p. 181, IV.2	Liber Pater-Silenus	Relief fragment
MRRA II.2.20.	Lupa 19335= Ota, Buta 2022, p. 182, V.1	Liber Pater-Silenus	Relief fragment
MRRA II.2.21.	Băluță 1976, p. 135, fig. 3	Libera	Relief fragment

MRRA II.2.22.	Moga 2004, p. 258, fig. 5	Mercurius	Relief fragment
MRRA II.2.23.	Băluță 1976, p. 134, fig. 3 = Lupa 21974	Minerva	Relief fragment
MRRA II.2.24.	CIMRM 2186 = Lupa 17353 = Sicoe 2014, p. 244, nr. 225	Mithras	Altar relief
MRRA II.2.25.	Lupa 17466 = Sicoe 2014, p. 160, nr. 42	Mithras	Relief
MRRA II.2.26.	Lupa 19256 = Sicoe 2014, p. 156, nr. 39	Mithras	Relief
MRRA II.2.27.	Lupa 19314 = Sicoe 2014, p. 156-157, nr. 40	Mithras	Relief
MRRA II.2.28.	Lupa 21981 = Sicoe 2014, p. 161, nr. 43	Mithras	Relief fragment
MRRA II.2.29.	CIMRM 1985 = Lupa 23328 = Sicoe 2014, p. 164, nr. 50	Mithras	Altar relief
MRRA II.2.30.	Szabó <i>et alii</i> 2014 = Sicoe 2014, p. 147, nr. 18 = CIMRM 1938 and 1986	Mithras	Relief
MRRA II.2.31.	Lupa 19316	Nantosuelta	Relief
MRRA II.2.32.	Lupa 19327 = Pop 1967, p. 172, fig. 3	Pan	Relief
MRRA II.2.33.	Băluță 1976, p. 143, fig. 4 = Lupa 19331	Pan/Satyr	Relief fragment
MRRA II.2.34.	Rusu 1973, p. 401, nr.1 = Mladin, Bounegru 2022	Silvanus	Relief
MRRA II.2.35.	Băluță 1976, p. 135, fig. 1	Silvanus	Relief fragment
MRRA II.2.36.	Lupa 19329 = CCET IV, nr. 137	Thracian Rider	Relief
MRRA II.2.37.	Lupa 19330 = CCET IV, nr. 138	Thracian Rider	Relief
MRRA II.2.38.	CCET IV. 140	Thracian Rider	Relief fragment
MRRA II.2.39.	Ciobanu <i>et alii</i> 2000, p. 318-319, nr. 3d, fig. 11	Thracian Rider	Relief fragment
MRRA II.2.40.	Szabó 2016c, p. 69, nr. 6	Thracian Rider	Relief fragment
MRRA II.2.41.	Lupa 19363	Uncertain	Relief fragment
MRRA II.2.42.		Uncertain	Relief fragment
MRRA II.2.43.	Moga 2003, p. 228, fig. 4 = Lupa 19362	Uncertain (Hercules?)	Relief fragment

MRRA II.2.44.		Uncertain (Iuno?)	Relief fragment
---------------	--	-------------------	-----------------

II.3. Decorative elements

Catalogue number	Bibliography	Description	Functional category
MRRA II.3.1.	Lupa 19315	Aquatic divinity	architrave
MRRA II.3.2.		Aquatic monster	architrave
MRRA II.3.3.		Aquila legionis	decoration

II.4. Bronze and silver statues, statuettes, reliefs

Catalogue number	Bibliography	Description	
MRRA II.4.1.	Diaconescu 2013, p. 50	Apollo	statuette
MRRA II.4.2.	Szabó <i>et alii</i> 2016b	Artemis Ephesia	statuette
MRRA II.4.3.	Timofan 2005	Fascinum	statuette
MRRA II.4.4.	Diaconescu 2013, p. 55	Fortuna	statuette
MRRA II.4.5.	Cserni 1901, p. 206, fig. 20	Fortuna	Silver plaque
MRRA II.4.6.	Moga 2008, p. 92, fig. 5	Genius (?)	statuette
MRRA II.4.7.	Țeposu-Marinescu, Pop 2000, cat. nr. 147	Hercules	statuette
MRRA II.4.8.	Ota, Lascu 2022	Jupiter	statuette
MRRA II.4.9.	Popa, Berciu 1977, p. 226.	Luna/Diana	statuette
MRRA II.4.10.	Moga 2008, p. 89, fig. 2	Mars (?)	Statuette/ decoration
MRRA II.4.11.	Moga 2008, p. 90, fig. 3	Mars (?)	Statuette/ decoration
MRRA II.4.12.	Moga 2008, p. 91, fig. 4	Mars or Minerva	Statuette/ decoration
MRRA II.4.13.	Popa, Berciu 1977, p. 218.	Mercurius	statuette
MRRA II.4.14.	Moga 2004, p. 256, fig. 1a-c	Mercurius	statuette
MRRA II.4.15.	Cserni 1901, p. 207, fig. 21	Mercurius	Silver plaque
MRRA II.4.16.	Popa, Berciu 1977, p. 226	Mercurius	statuette
MRRA II.4.17.	Ota, Bolog 2019	Minerva	statuette
MRRA II.4.18.	Popa 1967, p. 157	Osiris	statuette (uncertain provenience)
MRRA II.4.19.	Moga 2011, p. 237	Pan	statuette
MRRA II.4.20.	Moga <i>et alii</i> 2008, p. 99, nr.	Priapus	statuette

	120		
MRRA II.4.21.	Țeposu-Marinescu, Pop 2000, cat.nr. 46 = KHM VI.2898a	Silvanus/ Sucellus (?)	statuette
MRRA II.4.22.	Pop 1993, p. 224, nr. 15	Vegetal motifs (Dolichenus?)	statuette
MRRA II.4.23.	Popa, Berciu 1977, p. 218 = Antal 2016, p. 158, nr. 1	Venus	statuette
MRRA II.4.24.	Antal 2016, p. 159, nr. 2	Venus	statuette
MRRA II.4.25.	Popa, Berciu 1977, p. 218 = Moga 2011, p. 237 = Antal 2016, p. 159, nr. 3	Venus	statuette
MRRA II.4.26.	Timofan, Buta 2023, p. 25, fig. 3	Venus	statuette
MRRA II.4.27.	Pop 1993, p. 224, nr. 11	Uncertain divinity	statuette

Conclusions

Establishing the first, comprehensive catalogue of votive monuments from Apulum is the first step for a detailed, monograph length analysis of the religious life of the city. The last detailed study on the religious life is almost half a century old⁷¹. The current catalogue will be transformed into a digital, interactive database (MRRA)⁷² which will serve as the basis of a future monograph on the religious life of the city and the first comprehensive CSIR catalogue of the votive monuments of Apulum. Knowing the material evidence of Roman religion in one of the largest urban centres of the Danubian provinces is the first step for a detailed analysis on the materiality of religion –a notion which involves a large variety of facets and aspects of religious communication in recent scholarship⁷³.

Studying urban religion is a booming field in contemporary Roman religious studies and has numerous research perspectives⁷⁴. Apulum serves as a good example for multiple research questions and comparative approaches with other, similar cities from the Danubian provinces⁷⁵. Future research can focus on aspects of the diaspora-religion in Apulum⁷⁶, monumentalisation of sacralised

⁷¹ Popa 1975. On the religious life of the *canabae* and the *municipium Septimium* we can find in Ota 2012.

⁷² <https://mrraapulum.com/>. Last accessed 12.06.2024.

⁷³ Brent Plate 2015.

⁷⁴ Rüpke 2020; Rüpke-Urciuoli 2023.

⁷⁵ Szabó forthcoming.

⁷⁶ Schäfer 2004.

spaces, local artistic appropriations⁷⁷, the sensescape of religion in the few, archaeologically attested case studies, the role and nature of the divine agencies in the city (analysis of the local pantheon)⁷⁸, the economic aspects of religion⁷⁹ and the gender-aspects of the votive material⁸⁰. A special focus on domestic religion and rural (extra-urban) religion would be also important⁸¹. In depth analysis of case studies and historiographic research also offer valuable information about the glocal aspects of religion⁸².

Future studies on Roman religion and the votive material of Apulum can focus not only on the historical analysis of the existing material, but also using transdisciplinary methods, such as polychrome analysis of votive monuments⁸³ and petrographic analysis of stone material. Such attempts are important to study the cognitive aspects of Roman religion (colours, sensescape of religion) and the workshops and production process of the votive material⁸⁴. Using modern museology in the presentation of materiality of Roman religion is also a rapidly developing field with promising perspectives, already used in the National Museum of Union in Alba Iulia⁸⁵. Several areas of the *colonia Aurelia Apulensis* are still not researched with non-destructive methods (geophysical measurements): a comprehensive fieldwork in the eastern wall area, the territory of the Asklepieion in the North-Western corner of the civilian town and in some parts of the *municipium Septimium* (especially in private gardens south of the legionary fortress) can reveal the remaining urban fibre of Apulum. Large scale LiDAR scanning was made in 2014 (50.000 m²) as part of the LAKI II project⁸⁶ which also included the territory of Roman Apulum, however, there is no detailed analysis available on the possible results of Roman sites (**fig. 8**)⁸⁷. New aerial photography, drone photography and the analysis of multispectral contrast of archaeological features can be promising in the territory of the *colonia Aurelia Apulensis* (**plate no. II and III**).

⁷⁷ Szabó 2015c.

⁷⁸ For a case study see: Kremer 2012, p. 372-374.

⁷⁹ Szabó 2013a.

⁸⁰ Szabó 2024c.

⁸¹ On the methodological issues of *rural* religion in Roman period see: Religion auf dem Lande 2009.

⁸² See for example: Szabó 2013b.

⁸³ For analogy see: Kremer *et alii* 2023.

⁸⁴ The case study of Carnuntum on the workshops of the votive material is paradigmatic again in this field: Kremer 2012, p. 404-412. See also: Müller *et alii* 2011.

⁸⁵ Timofan *et alii* 2018. A proposal for the Mithraic material see: Szabó *et alii* 2023.

⁸⁶ Pârnu *et alii* 2017.

⁸⁷ Detailed LiDAR maps were delivered for this study by ANCPI (Agenția Națională de Cadastru și Publicitate Imobiliară), however no significant Roman anomalies can be observed on the maps. We are thankful for dr. Ileana Spiroiu and the team of the ANCPI and CNC (Centrul Național de Cartografie) for their kind answer and help.

As the third largest quantity of votive material in the Danubian provinces of the Roman Empire, the materiality of Roman religion in Apulum represents not only an important and long-term source material for inter- and transdisciplinary research, but a significant material of cultural heritage of Romania and Europe as well, which deserves a special attention in the future.

Acknowledgements

This study was made in the framework of the Joint Excellence in Science and Humanities fellowship of Csaba Szabó (*Glocalisation and urban religion: the case studies of Apulum and Carnuntum*) hosted by the Austrian Archaeological Institute (Austrian Academy of Sciences – ÖAI-ÖAW) in the period of December 2023-August 2024. We are thankful for Gabriel Rustoiu, director and manager of the National Museum of Union Alba Iulia and the museologists from the National Museum of Union Alba Iulia, prof. Ian Haynes, Kris Lockyear, Ioana Oltean, William Hanson and his collaborators from the Liber Pater Project, Gabrielle Kremer and Christian Gugl from ÖAI-ÖAW, prof. Ioan Piso from the Centre of Roman Studies (UBB, Cluj) and several other colleagues from Alba Iulia, Sibiu, Deva, Cluj and Vienna for their help and assistance in the last ten years.

MATERIALITATEA RELIGIEI ROMANE LA APULUM. CATALOGUL ȘI TOPOGRAFIA DESCOPERIRILOR

REZUMAT

Materialul arheologic al religiei romane din Apulum reprezintă una dintre cele mai mari colecții de descoperiri votive din provinciile danubiene, similară doar cu cantitatea și calitatea monumentelor votive de la Carnuntum și Aquincum. Articolul își propune să prezinte un scurt istoric al cercetării religiei romane de la Apulum în ultimul deceniu, topografia descoperirilor votive și prima listă preliminară a monumentelor votive (monumente de piatră și bronz inscripționate și neinscripționate). Cele 638 de monumente enumerate în articol reprezintă prima încercare de a stabili un catalog al descoperirilor votive din conurbația Apulum, care va fi prezentat sub forma unei baze de date digitale (MRR - Materiality of Roman Religion in Apulum).

ABSTRACT

The material evidence of the Roman conurbation of Apulum represents one of the largest collections of votive finds from the Danubian provinces, similar only to the quantity and quality of the votive monuments of Carnuntum and Aquincum. The article

aims to present a short research history on Roman religion of Apulum in the last decade, the topography of the votive finds and the first preliminary list of votive monuments (inscribed and uninscribed stone and bronze monuments). The 638 monuments listed in the article represent the first attempt to establish a catalogue of votive finds from the conurbation of Apulum which will be presented in the form of a digital database (MRRA – Materiality of Roman Religion in Apulum).

LIST OF ILLUSTRATIONS:

Fig. 1. Map of the Danubian provinces with the largest concentrations of votive inscriptions (after Szabó 2022, p. 113, fig. 3.8)

Fig. 2. Map of the Roman legionary fortress of the XIII Gemina legion in Apulum (made by A. Buta and R. Ota, July 2024; adapted after Gudea *et alii* 2015)

Fig. 3. Area of the fortress, the *municipium Septimium Apulense* and the *canabae* (author: Orsolya Gyurka)

Fig. 4. Map of the *colonia Aurelia Apulensis* (author: Orsolya Gyurka)

Fig. 5. General map of the conurbation in Apulum with the four archaeologically attested sanctuaries: no. 1. sanctuaries of the *praetorium consularis*; no. 2. Liber Pater shrine; no. 3. Mithraeum; no. 4. *aedes signorum* in the *principia* (author: Orsolya Gyurka)

Fig. 6. Integrated interpretation of Survey Data from the Apulum Project, coordinated by Ian Haynes, combining archival sources with magnetometry survey results (Ian Haynes, Alex Turner and GSB), resistivity survey results (Kris Lockyear) and TST survey (Doru Bogdan, Jamie Sewell and Alex Turner), and with aerial photographic survey results stemming from The Later Prehistoric and Roman Landscape in Western Transylvania Project coordinated by W. S. Hanson (Ioana Oltean and W. S. Hanson). See also: Diaconescu, Piso 1993; Oltean 2007, p. 169, fig. 5.3.5; Haynes 2014, p. 89 and online report no. 30 in *Cronica Cercetărilor* in year 2004: <https://cronica.cimec.ro/detail.asp?k=3055>. Map: Ian Haynes

Fig. 7a-b. Topography of votive monuments (inscribed monuments, uninscribed statues, reliefs and bronze statuettes) of Apulum with exact (red) or approximate (yellow) coordinates (author: Orsolya Gyurka). Findspots and heat-map of the finds

Fig. 8. Topography of the Roman conurbation of Apulum on the LiDAR map of LOKI II project. We are thankful for dr. Ileana Spiroiu and the team of the ANCPI (Agenția Națională de Cadastru și Publicitate Imobiliară) and CNC (Centrul Național de Cartografie) for their kind help. Map: Orsolya Gyurka

Plt. no. I: the plans of the four excavated sanctuaries in Apulum (after Szabó 2018, p. 24, fig. 10, p. 54, fig. 31, p. 81, fig. 38 and McCarty *et alii* 2019, p. 286, fig. 3)

Plt. no. II.1-4. Drone photography in the North-West part of the *colonia Aurelia Apulensis*, the area of the Liber Pater shrine and the Asklepieion (photos: Miruna Libiță-Partică and Ioan Muntean)

Plt. no. III.1-4. Drone photography in the Eastern wall area of the *colonia Aurelia Apulensis* (photos: Miruna Libiță-Partică and Ioan Muntean)

References:

Abbreviations:

AE: *L'Année épigraphique*

CCCA VI.: J. Maarten Vermaseren, *Corpus Cultus Cybelae Attidisque IV*, Leiden, Brill, 1978

CCET IV.: N. Hampartumian, *Corpus Cultus Equitis Thracii IV. Moesia Inferior (Romanian Section) and Dacia*, Leiden, Brill, 1979

CCID: M. Hörg, E. Schwertheim, *Corpus Cultus Iovis Dolicheni*, Études préliminaires aux religions orientales dans l'Empire romain 106, Leiden, 1987

CigDac: L. Ruscu, *Corpus inscriptionum Graecarum Dacicarum*, Hungarian Polis Studies 10, Debrecen, 2003

CIL: *Corpus inscriptionum latinarum*. Consilio et auctoritate Academiae Litterarum Regiae Borussicae editum

CMRED I.: Tudor, Dumitru, *Corpus monumentorum religionis equitum danuvinarum I. Monuments*, Leiden, Brill, 1969

CIMRM II.: Vermaseren, Maarten J., *Corpus Inscriptionum et Monumentorum Religionis Mithriacae II*, The Hague, 1960

Clauss-Slaby: Epigraphik Dantebank Clauss-Slaby

EDH: Epigraphic Database Heidelberg

IDR: *Inscriptiones Daciae Romanae*, I-III, București/Paris

ILD: C. C. Petolescu, *Inscriptii latine din Dacia*. (Inscriptiones Latinae Daciae), București 2005 and 2016

Lupa: Ubi Erat Lupa Bilddatenbank zu antiken Steindenkmälern (lupa.at)

RICIS: Bricault, Laurent, *Recueil des inscriptions concernant les cultes isiaques*, Mémoires de l'Académie des Inscriptions et Belles-Lettres 31, Paris, 2005

SEG: Supplementum Epigraphicum Graecum, Brill, 1923 -

Alicu *et alii* 1979 – D. Alicu, C. Pop, V. Wollmann, *Figured monuments from Ulpia Traiana Sarmizegetusa*, Oxford, British Archeological Reports series, 1979

Almăjanu, Ota 2015 – A. Almăjanu, R. Ota, „Cultul lui Apollo”, *Apulum*, 52/1, 2015, p. 259-277

Anghel 1975 – Gh. Anghel, „Cetățile medievale din Alba Iulia”, *Apulum*, 13, 1975, p. 245-271

Anghel *et alii* 2021 – C. Anghel, S. Arhire, V. Moga, C. Popa, C. Popa-Gorjanu, L. Stanciu, „The attitude of Generations towards the Heritage”, in: C. Anghel, S. Arhire, V. Moga, C. Popa, C. Popa-Gorjanu, L. Stanciu (eds.), *Memoria Urbis. An illustrated history of Alba Iulia*, Cluj-Napoca, 2021, p. 8-14

Antal 2016 – A. Antal, *Venus cult in Roman Dacia*, Cluj-Napoca, 2016

Bagnall, Heath 2018 – R. S. Bagnall, S. Heath, „Roman Studies and Digital Resources”, *The Journal of Roman Studies*, 108, 2018, p. 171-189

Băluță 1976 – C. Băluță, „Plăci votive de la Apulum”, *Apulum*, 14, 1976, p. 131-146

- Băluță 1980 – C. Băluță, „Statui reprezentând pe Jupiter tronans descoperite la Apulum”, *Apulum*, 18, 1980, p. 101-112
- Bărbulescu 1984 – M. Bărbulescu, *Interferențe spirituale în Dacia romană*, Cluj-Napoca, 1984
- Bodor 1995 – A. Bodor, „Erdélyi ókori történetének kutatása a XIX. század közepéig”, *Erdélyi Múzeum*, 3-4, 1995, p. 56-81
- Bogdan *et alii* 2015 – D. Bogdan, C. Höpken, M. Fiedler, „Kult in offenem Raum? Untersuchungen in einem Heiligtumsbezirk in Apulum (Alba Iulia, Rumänien) 2013-2014”, *Kölner und Bonner Archaeologica*, 5, 2015, p. 167-176
- Bounegru 2017 – G. Bounegru, *The Northern Necropolis of Apulum „Ambulance Station” 1981–1985. Necropola nordică de la Apulum „Stația de salvare” 1981-1985*, Cluj-Napoca, 2017
- Bounegru, Ciobanu 2012 – G. Bounegru, R. Ciobanu, *Între util și estetic. Scrisul la Apulum. Catalog de expoziție*, Alba Iulia, 2012
- Ciobanu 2013 – R. Ciobanu, „Text, imagine, mesaj - considerații epigrafice, iconografice și stilistice asupra unor piese votive de la Apulum”, *Apulum*, 50/1, 2013, p. 127-149
- Ciobanu 2015 – R. Ciobanu, „O nouă statueta descoperită la Apulum cu reprezentarea unui zeu fluvial – elemente de mitologie comparată, probleme de iconografie și stil”, *Apulum*, 52/1, 2015, p. 245-257
- Ciobanu *et alii* 2000 – R. Ciobanu, M. Drîmbărean, N. Rodean, A. Gligor, „Raport privind cercetările arheologice de salvare din Dealul Furcilor și din Str. Arhim. Iuliu Hossu (Brândușei) Alba Iulia, campaniile 1996-1999”, *Apulum*, 37/1, 2000, p. 293-339
- Ciută 2014 – M.-M. Ciută, „Istoria pierdută – istoria recuperată. Cazul Hercules 2013”, *Apulum*, 51/1, 2014, p. 471-490
- Crișan 1971 – I. H. Crișan, „Asklepeionul roman de la Apulum”, *Apulum*, 9, 1971, p. 341-346
- Cupcea *et alii* 2020 – G. Cupcea, D. Deac, C. Inel, „Sarapis and the Principia of the Legionary Fortress from Apulum”, *Bibliotheca Isiaca*, IV, 2020, p. 115-121
- Cupcea 2024 – G. Cupcea, *Latin inscriptions from the legionary fortress of Apulum*, Tyche Supplementband 16, Wien, 2024
- Cserni 1901 – B. Cserni, *Alsófehér vármegye története a római korban*, Nagyenyedi Könyvnyomda és Papíráru gyár Részvénytársaság, Nagyenyed, 1901 (*The history of Alsófehér county in Roman times*)
- Da Vela *et alii* 2023 – R. Da Vela, M. Franceschini, F. Mazzilli (eds), *Networks as Resources for Ancient Communities*, Ressourcenkulturen 22, Tübingen, Tübingen University Press, 2023
- Daicoviciu 1941 – C. Daicoviciu, „Neue Mitteilungen aus Dazien”, *Dacia - Revue d'archéologie et d'histoire ancienne*, 7-8, 1941, p. 299-336
- Dârja 1997 – I. Dârja, „Din istoria Bibliotecii „Batthyaneum”. Etapa I: 1798-1826 (De l'histoire de la Bibliothèque Batthyaneum)”, *Apulum*, 34, 1997, p. 341-365
- Diaconescu 2001 – A. Diaconescu, „A statue of Liber Pater from Apulum (Alba Iulia)”, *Acta Musei Napocensis*, 38, 2001, p. 161-176

- Diaconescu 2004 – A. Diaconescu, „The towns of Roman Dacia. An overview of recent archaeological research in Romania”, in: I. Haynes, W. Hanson (eds.), *Roman Dacia. The making of a provincial society*, Portsmouth, 2004, p. 87-142
- Diaconescu 2005 – A. Diaconescu, *Statuaria majoră în Dacia romană I-III*, Cluj-Napoca (electronic edition), 2005
- Diaconescu 2013 – A. Diaconescu, *Clasicismul în plastica minoră din Dacia romană*, Cluj-Napoca, 2013
- Diaconescu *et alii* 1997 – A. Diaconescu, A. Schäfer, I. Haynes, „Das Liber Pater Heiligtum von Apulum”, in: H. Cancik, J. Rüpke (eds.), *Reichsreligion und Provinzialreligion*, Tübingen 1997, p. 195-218
- Derks 2024 – T. Derks, „Materialising imperial ideology and religion in the Roman world”, in: J. Tanner, A. Gardner (eds.), *Materialising the Roman Empire*, 2024, p. 231-261
- Donev 2019 – D. Donev, *The Busy Periphery: Urban Systems of the Balkan and Danube Provinces (2nd – 3rd c. AD)*, Oxford, 2019
- Donev 2020 – D. Donev, „The top-ranking towns in the Balkan and Pannonian provinces of the Roman Empire”, *Arheološki vestnik*, 71, 2020, p. 193-215
- Egri *et alii* 2018 – M. Egri, M. McCarthy, A. Rustoiu, C. Inel, „A new mithraic community at Apulum (Alba Iulia, Romania)”, *Zeitschrift für Papyrologie und Epigraphik*, 205, 2018, p. 268-276
- Goronea 2007 – T. Goronea, *Fortificația bastionară de tip Vauban de la Alba Iulia: (prima jumătate a secolului al XVIII-lea)*, Alba Iulia, 2007
- Gudea 2014 – N. Gudea, „Inscriptiones Tegularum Legionis XIII Geminae: 1. Tipologia ștampilelor pe țigle și cărămizi descoperite în castru”, *Apulum*, 51/1, 2014, p. 545-560
- Gudea *et alii* 2015 - N. Gudea, C. Inel, O. Oargă, „The Roman Camp of Apulum. Archaeological Research in the Principia”, in: L. Vagalinski, N. Sharankov (eds.), *Limes XXII. Proceedings of the 22nd International Congress of Roman Frontier Studies Ruse, Bulgaria, September 2012*, Sofia, 2015, p. 233-241
- Hanson, Oltean 2003 – W. Hanson, I. Oltean, „The identification of Roman buildings from the air: recent discoveries in Western Transylvania”, *Archaeological Prospection*, 10/2, 2003, p. 101-117
- Haynes 2014 – I. Haynes, „Characterising cult communities in the Roman provinces: some observations on small finds from the sanctuary of Liber Pater from Apulum”, in: R. Collins, F. McIntosh (eds.), *Life in the Limes: Studies of the people and objects of the Roman frontiers*, Oxford, Oxbow Books, 2014, p. 87-95
- Jupiter 2013 – C.-G. Alexandrescu (ed.), *Jupiter on your side: gods and humans in antiquity in the Lower Danube area: accompanying publication for the thematic exhibitions in Bucharest, Alba Iulia and Constanța, May - September 2013*, București, 2013
- Király 1892 – P. Király, *Gyulafehérvár története. I. kötet: Apulum. Gyulafehérvár a római korban*, Gyulafehérvár, 1892
- Köppen 1823 – P. van Köppen, „Die dreygestaltete Hekate und ihre Rolle in den Mysterien. Nach einem Standbilde im Baron Bruckenthalischen Musaeum zu

- Hermanstadt in Siebenbürgen”, *Archiv für Geschichte, Statistik, Literatur und Kunst*, 14, Wien, 1823, p. 17-24
- Kremer 2012 – G. Kremer, *Götterdarstellungen, Kult- und Weihedenkmäler aus Carnuntum*, Wien, Österreichische Akademie der Wissenschaften, 2012
- Kremer *et alii* 2023 – G. Kremer, R. Linke, G. Plattner, E. Pollhammer, M. Brzakovic, R. Krickl, N. Silnovic, V. Pitthard, „Minerva in Colours: First Results on a Polychrome Roman Sculpture from Carnuntum (Pannonia)”, *Heritage*, 2023, 6, p. 5213-5241
- Mccarty *et alii* 2019 – M. Mccarty, M. Egri, A. Rustoiu, „The archaeology of ancient cult: from foundation deposits to religion in Roman Mithraism”, *Journal of Roman Archaeology*, 32, 2019, p. 279-312
- McCarty *et alii* 2020 – M. McCarty, M. Egri, A. Rustoiu, „Apulum Mithraeum III and the Multiplicities of Mithraism”, in: M. McCarty, M. Egri (eds.), *The archaeology of Mithraism: new finds and approaches to Mithras worship*, Leuven, Peeters, 2020, p. 123-135
- Mitrofan 1971 – I. Mitrofan, „Obiecte romane de la Apulum într-o colecție din Bistrița”, *Apulum*, 9, 1971, p. 331-339
- Mladin, Bounegru 2022 – C. Mladin, G. Bounegru, „Silvanus redivivus. Redescoperirea unei plăci votive romane de la Apulum”, *Apulum*, 59/1, 2022, p. 221-231
- Moga 1998 – V. Moga, *Castrul roman de la Apulum*, Cluj-Napoca, 1998
- Moga 2003 – V. Moga, „Noutăți arheologice apulense”, *Apulum*, 40, 2003, p. 225-230
- Moga 2004 – V. Moga, „Mercurius la Apulum”, *Apulum*, 41, 2004, p. 253-258
- Moga 2008 – V. Moga, „Considerații asupra unor artefacte arheologice recuperate (Notes on some recovered archaeological artifacts)”, *Patrimonium Apulense*, 7-8, 2008, p. 83-95
- Moga 2011 – V. Moga, „Considerations on some artefacts of Roman Period from the collection of the Batthyaneum Library”, in: D. Hende-Biro (ed.), *Batthyaneum, omagiu fondatorului Ignatius Sallestius de Batthyan (1741-1798)*, București, 2011, p. 235-236
- Moga *et alii* 2008 – V. Moga, A. Timofan, I. Lascu, G. Bounegru, R. Ota, G. Bălan, D. Anghel, *Descoperă arheologia urbană! Apulum 2007*, Alba Iulia, 2008
- Müller *et alii* 2011 – H. Müller, I. Piso, B. Schweighofer, M. Benea, *Der Marmor im Römischen Dakien*, Cluj-Napoca, 2011
- Neigebaur 1851 – J. F. Neigebaur, *Dacien: aus den Ueberresten des klassischen Alterthums. Besonderer Rücksicht auf Siebenbürgen*, Kronstadt, 1851
- Nemeti 2010 – S. Nemeti, „River names in Dacia”, in: M. Angelescu, I. Achim, A. Băltăc, V. Rusu-Bolindeț, V. Bottez (eds.), *Antiquitas Istro-Pontica: mélanges d'archéologie et d'histoire ancienne offerts à Alexandru Suceveanu*, Bucuresti, 2010, p. 103-115
- Nemeti 2016 – I. Nemeti, „Votive monuments from Dacia Superior in Lugosi Fodor András' manuscript”, *Studia Universitatis Babeș-Bolyai – Historia*, 61, 2016, p. 115-124
- Nemeti 2021 – S. Nemeti, „Celtica (I-II)”, *Acta Musei Porolissensis*, 43, 2021, p. 139-150

- Oltean 2007 – I. Oltean, *Dacia: Landscape, Colonisation and Romanisation*, New York, 2007
- Ota 2005 – R. Ota, „Date noi privind cultul lui Aesculapius la Apulum”, *Sargetia*, 33, 2005, p. 197-203
- Ota 2006 – R. Ota, „O nouă statueta a lui Hercules descoperită la Apulum”, *Patrimonium Apulense*, V-VI, 2006, p. 47-53
- Ota 2008 – R. Ota, „Roman sculptural pieces from the old collections of the National Museum of Union from Alba Iulia and from the new researches carried out over the territory of the actual town”, *Ephemeris Napocensis*, 18, 2008, p. 185-196
- Ota 2009 – R. Ota, „Several accounts on the worship of Liber Pater-Dionysus in Apulum”, in: M. Rotar, V.-T. Roșu (eds.), *Proceedings of the Alcoholism: Historical and Social Issues International Conference 1, Alba Iulia, 28–29 August 2009*, Alba Iulia, 2009, p. 161-169
- Ota 2011 – R. Ota, „From Beauty to Wisdom: votive statues of Venus, Minerva and an unidentified Goddess from Apulum”, in: I. Piso, V. Rusu-Bolindeț, R. Varga, S. Mustață, L. Ruscu (eds.), *Scripta Classica. Radu Ardevan Sexagenario Dedicata*, Cluj-Napoca, 2011, p. 159-167
- Ota 2012 – R. Ota, *De la canabele legiunii a XIII-a Gemina la Municipium Septimium Apulense*, Alba Iulia, 2012
- Ota 2013 – R. Ota, „Remarks on the stone statues of Jupiter in Dacia”, in: C. G. Alexandrescu (ed.), *Jupiter on your side: gods and humans in antiquity in the Lower Danube area: accompanying publication for the thematic exhibitions in Bucharest, Alba Iulia and Constanta, May - September 2013*, București, 2013, p. 63-79
- Ota 2014 – R. Ota, „O nouă atestare a zeului Pan și câteva considerații privind imaginile iconografice ale divinității la Apulum”, *Apulum*, 51/1, 2014, p. 527-532
- Ota 2017 – R. Ota, „Adalbert Cserni and the Roman provincial art. Case studies from Apulum”, in: C. Szabó, V. Rusu-Bolindeț, M. Gligor, G. T. Rustoiu (eds.), *Adalbert Cserni and his contemporaries. The pioneers of archaeology in Alba Iulia and beyond*, Cluj-Napoca, 2017, p. 53-61
- Ota 2019 – R. Ota, „Aesculapius și Hygia, zeii vindecători/Aesculapius and Hygeia, the healing gods”, in: A. Timofan (ed.), *Pantheon 3D III. De la zeii Olimpului la zeii Romei. From the Gods of Olympus to the Gods of Rome*, Cluj-Napoca, 2019, p. 67-73
- Ota 2020 – R. Ota, „O locuință de epoca post-romană găsită la Apulum”, *Apulum*, 57/1, 2020, p. 307-316
- Ota, Bolog 2019 – R. Ota, „A bronze figurine of Minerva discovered at Apulum”, *Acta Archaeologica Academiae Scientiarum Hungaricae*, 70, 2, p. 317-323
- Ota, Bounegru 2023 – R. Ota, G. Bounegru, „O statueta a lui *Iupiter tronans* descoperită recent la Apulum”, in: D. Bondoc, C. Timoc (eds.), *In honorem Constantin C. Petolescu*, Craiova, 2023, p. 239-245
- Ota, Buta 2022 – R. Ota, A. Buta, „Images of Silenus at Apulum”, in: S. Nemeti, I. Nemeti, F. Fodorean, S. Cociș (eds.), *Est modus in rebus. Essays presented to*

- Professor Mihai Bărbulescu at his 75th anniversary*, Cluj-Napoca, 2022, p. 173-182
- Ota, Florescu 2017 – R. Ota, C. T. Florescu, „A votive altar discovered in the legionary camp of Apulum”, *Journal of Ancient History and Archaeology*, 4.4, 2017, p. 72-79
- Ota, Lascu 2011 – R. Ota, I. Lascu, „Cercetări arheologice în canabae legionis XIII Geminae”, *Acta Musei Porolissensis*, 33, 2011, p. 205-224
- Ota, Lascu 2022 – R. Ota, I. Lascu, „Votive Bronze Statuette of Jupiter recently found at Apulum, Roman Dacia”, *Tyragetia*, 16, nr. 1, 2022, p. 275-279
- Ota *et alii* 2018 – R. Ota, F. Matei-Popescu, C. T. Florescu, „A new inscription discovered in the Apulum legionary fortress”, *Acta Musei Napocensis*, 55, 1, 2018, p. 167-173
- Ota *et alii* forthcoming – R. Ota, S. P. Olea, D. Groza, „The cult statue of Hygeia recently found in colonia Aurelia Apulensis, Roman Dacia” (in press)
- Ota, Totoianu 2009 – R. Ota, R. Totoianu, „Noi artefacte romane aflate în colecțiile muzeelor din Sebeș și Alba Iulia”, *Apulum*, 46, 2009, p. 615-624
- Pantheon II 2018 – A. Timofan (ed.), *Pantheon 3D. II. Zei salvatori – culte de mistere – syncretism. Saviour gods – mystery cults – syncretism*, Cluj-Napoca, 2018
- Pantheon III 2019 – A. Timofan (ed.), *Pantheon 3D. III. De la zeii Olimpului la zeii Romei. From the gods of Olympus to the gods of Rome*, Cluj-Napoca, 2019
- Pavel 2019 – C. Pavel, „Mithras in Apulum – an iconographic case study”, *Apulum*, 56/1, 2019, p. 171-184
- Pârvu *et alii* 2017 – I. M. Pârvu, I. A. Cuibac Picu, A. Pârvu, M. Dogaru, „LiDAR applications based on LAKI II Project”, *RevCAD Journal of Geodesy and Cadastre*, 23, 2017, p. 191-200
- Piso 1995 – I. Piso, „Eine Parallele zwischen den Praetoria der Statthalter in Carnuntum und in Apulum”, *Carnuntum Jahrbuch*, 1995, p. 203-209
- Piso 2001 – I. Piso, *Inscriptions d'Apulum. Inscriptions de la Dacie romaine*, III/5, vol. I-II, Paris, 2001
- Piso 2003 – I. Piso, „L'urbanisation des provinces danubiennes”, in: M. Reddé, L. Dubois, D. Briquel (eds.), *La naissance de la ville dans l'Antiquité*, Paris, 2003, p. 285-298
- Piso 2011 – I. Piso, „O crimă împotriva patrimoniului național”, *Cotidianul*, 17.12.2011
- Brent Plate 2015 – S. Brent Plate (ed.), *Key terms in Material Religion*, Bloomsbury, London-New York, 2015
- Pop 1967 – C. Pop, „Câteva reprezentări aparținând cultului dionysiac în Dacia”, *Apulum*, 6, 1967, p. 169-183
- Pop 1993 – C. Pop, „Bronzuri figurate în Dacia romană. Repertoriu apulens”, *Apulum*, 27-30, 1993, p. 223-226
- Pop, Milea 1967 – C. Pop, Z. Milea, „Monumente sculpturale din Dacia romană în legătură cu cultul lui Liber Pater”, *Acta Musei Napocensis*, 2, 1965, p. 195-208
- Popa 1967 – A. Popa, „Date noi cu privire la cultul lui Men și Jupiter Ammon în Dacia Superioară”, *Apulum*, 6, 1967, p. 145-163

- Popa 1975 – A. Popa, „Oraşul roman Apulum”, in: Ş. Pascu, D. Protase, P. Teodor, N. Edroiu, M. Trandafir (eds.), *Alba Iulia 2000*, Alba Iulia, 1975, p. 38-103
- Popa 1970 – A. Popa, *Culte egiptene și microasiatice în Dacia romană*, Unpublished PhD thesis and catalogue, Cluj-Napoca, Babeş-Bolyai University, 1970
- Popa 1982 – A. Popa, „Un intéressant monument représentant Jupiter-Zbelsurdos”, *Latomus*, 41, nr. 2, 1982, p. 353-355
- Popa, Berciu 1977 – A. Popa, I. Berciu, „Câteva obiecte de bronz și argint de la Apulum”, *Apulum*, 15, 1977, p. 217-233
- Religion auf dem Lande 2009 – C. Auffarth (ed.), *Religion auf dem Lande. Entstehung und Veränderung von Sakrallandschaften unter römischer Herrschaft*, Stuttgart, 2009
- Rusu 1973 – A. Rusu, „Considerații privind cultul lui Silvanus în Dacia romană”, *Sargetia*, 10, 1973, p. 396-403
- Russu 1949 – I. I. Russu, „Apulum. Numele și originea localității daco-romane”, *Apulum*, 3, 1949, p. 145-161
- Rüpke 2018 – J. Rüpke, *Pantheon. A new history of Roman religion*, Princeton, 2018
- Rüpke 2020 – J. Rüpke, *Urban Religion. A Historical Approach to Urban Growth and Religious Change*, New-York-Berlin, 2020
- Rüpke, Urciuoli 2023 – J. Rüpke, E. Urciuoli, „Urban religion beyond the city: theory and practice of a specific constellation of religious geography-making”, *Religion*, 53/2, p. 289-313. Open Access <https://doi.org/10.1080/0048721X.2023.2174913>
- Schäfer 2004 – A. Schäfer, „The diffusion of religious belief in Roman Dacia: a case-study of the gods of Asia Minor”, in: W. Hanson, I. Haynes (eds.), *Roman Dacia. The making of a provincial society*. Journal of Roman Archaeology Supplementary Series 56, 2004, p. 179-190
- Schäfer 2014 – F. Schäfer, *Praetoria. Paläste zum Wohnen und Verwalten in Köln und anderen römischen Provinzhauptstädten*, Köln, Nünnerich-Asmus Verlag & Media GmbH, 2014
- Scheidel 2018 – W. Scheidel (ed.), *The Science of Roman History: Biology, Climate, and the Future of the Past*, Princeton, 2018
- Sicoe 2014 – G. Sicoe, *Die mithräischen Steindenkmäler aus Dakien*, Cluj-Napoca, 2014
- Sipos, Vass 2011 – I. Sipos, C. Vass, „A Batthyaneum könyvtár rövid története”, in: D. Hendre-Biro (ed.), *Batthyaneum. Omagiu fondatorului Ignatius Sallestius de Batthyan (1741-1798)*, București, 2011, p. 41-50
- Szabó 2004 – A. Szabó, „Der ‘Locus’ von Apulum”, in: R. Ardevan, C. Ciongradi, C. Găzdac, L. Ruscu, (eds.), *Orbis Antiquus. Studia in Honorem Ioannis Pisonis*, Cluj-Napoca, 2004, p. 787-801
- Szabó 2013a – C. Szabó, „A vallási élet néhány gazdasági aspektusai Apulumban”, *V. Nemzetközi és XI. Országos Interdiszciplináris Grastyán Konferencia Kötete*, Pécs, 2013, p. 373-383 [Some economic aspects of the religious life in Apulum]
- Szabó 2013b – C. Szabó, „The Mithraic statue of Secundinus from Apulum”, *Revista Doctoranzilor în Istorie Veche și Arheologie*, I, 2013, p. 45-64

- Szabó 2014a – C. Szabó, „Discovering the Gods in Apulum: historiography and new perspectives”, *Revista Doctoranzilor în Istorie Veche și Arheologie*, II, 2014, p. 53-82
- Szabó 2014b – C. Szabó, „Notes on a new salararius from Apulum”, *Apulum*, 51/1, 2014, p. 533-544
- Szabó 2015 (2020) – C. Szabó, „Sanctuaries of Roman Dacia. A catalogue of sacralised places in shared and secondary spaces”, *Jahrbuch der Römisch-Germanisches Museum*, 62, 2015 (2020), p. 255-340
- Szabó 2015a – C. Szabó, „The cult of Mithras in Apulum: communities and individuals”, in: L. Zerbini (ed.), *Culti e religiosità nelle province danubiane*, Bologna, 2015, p. 407-422
- Szabó 2015b – C. Szabó, „Placing the gods. Sanctuaries and sacralized spaces in the settlements of Apulum”, *Revista Doctoranzilor în Istorie Veche și Arheologie*, 3, 2015, p. 123-160
- Szabó 2015c – C. Szabó, „Notes on a new Cautes statue from Apulum”, *Archaeologische Korrespondenzblatt*, 2/2015, p. 237-247
- Szabó 2015d – C. Szabó, „Karl Gooss and the temple of Jupiter from Apulum”, *Journal of Ancient History and Archaeology*, 2.4, 2015, p. 136-144
- Szabó 2015e – C. Szabó, „Mapping Apulum. Reconstructing a Roman city”, in: A. Dobos, Z. Molnár, S. Pánczél (eds.), *Archaeologia Transylvanica. Studia in honorem Stephani Bajusz*, Cluj-Napoca, 2015, p. 115-124
- Szabó 2016a – C. Szabó, *Béla Cserni and the beginnings of urban archaeology in Alba Iulia*, Cluj-Napoca, 2016
- Szabó 2016b – C. Szabó, „Histories of urban archaeology in Alba Iulia (1916-2016)”, *Transylvania Nostra*, 2, 2016, p. 30-41
- Szabó 2016c – C. Szabó, „Beyond iconography. Notes on the cult of the Thracian Rider in Apulum”, in: S. Nemeti, C. Szabó, I. Boda (eds.), *Si deus si dea. New perspectives in the study of Roman religion in Dacia*. Studia Universitatis Babeş - Bolyai, seria Historia, nr. 61, vol. 1, 2016, p. 62-73
- Szabó 2018 – C. Szabó, *Sanctuaries in Roman Dacia: materiality and religious experience*, Oxford, Roman Archaeology Series 49, 2018
- Szabó 2020a – C. Szabó, „Roman Dacia in the digital era”, *Journal of Ancient History and Archaeology*, 7/2, 2020, p. 185-190
- Szabó 2020b – C. Szabó, „Mapping Roman religion. A methodological approach”, *European Journal of Science and Theology*, 16/5, 2020, p. 183-195
- Szabó 2021 – C. Szabó, „Mithras in Apulum. Between local and universal”, in: L. Bricault, R. Veymiers, N. Amoroso (eds.), *The Mystery of Mithras: Exploring the Heart of a Roman Cult / Le Mystère Mithra. Plongée au cœur d'un culte romain*, Musée royal de Mariemont, Morlanwelz, 2021, p. 343-349
- Szabó 2022 – C. Szabó, *Roman Religion in the Danubian Provinces: Space Sacralisation and Religious Communication during the Principate (1st–3rd century AD)*, Oxford, 2022
- Szabó 2024a – C. Szabó, „Rewriting Roman Religion: historiography of a decade (2013-2023)”, *Memoria Antiquitatis*, 29, 2023 (2024), p. 381-391

- Szabó 2024b – C. Szabó, „Alfred von Domaszewski and Béla Cserni: Authority and academic networks in the late 19th century Transylvanian research”, in: C. Timoc, S. Nemeti (eds.), *Alfred von Domaszewski and his contemporaries*, Cluj-Napoca, 2024, p. 93-111
- Szabó 2024c – C. Szabó, „Women and Roman religion in Dacia: the epigraphic evidence”, *Cercetări Arheologice*, 31, nr. 1, 2024, p. 99-122
- Szabó forthcoming – C. Szabó, „Urban Religion with and without the city in the Danubian Provinces”, in: J. A. Ezquerro, V. Gasparini, E. Urciuoli (eds.), *New trends in the analysis of Roman polytheism*, Leiden, forthcoming
- Szabó, Boda 2014 – C. Szabó, I. Boda, „Roman religious studies in Romania. Historiography and new perspectives”, *Ephemeris Napocensis*, 24, 2014, p. 195-208
- Szabó et alii 2014 – C. Szabó, G. Bounegru, V. Sava, „Mithras rediscovered. Notes on CIMRM 1938”, *Ziridava. Studia Archaeologica*, 28, 2014, p. 149-156
- Szabó et alii 2016a – C. Szabó, I. Boda, C. Timoc, V. Bunoiu, „Notes on a new Mithraic inscription from Dacia”, in: L. Mihăilescu-Bîrliba, *Mensa Rotunda Epigraphica*, Cluj-Napoca, 2016, p. 91-104
- Szabó et alii 2016b – C. Szabó, R. Ota, M.-M. Ciută, „Artemis from Ephesus in Apulum: notes on a recently discovered bronze statuette”, *Acta Archaeologica Academiae Scientiarum Hungaricae*, 67, vol. 2, 2016, p. 231-243
- Szabó et alii 2023 – C. Szabó, M. Libiță-Partică, I. Muntean, „Mithras exhibited. Perspectives of sensory museology in Mithraic contexts”, *Cercetări Arheologice*, 30, nr. 2, 2023, p. 737-762
- Tanner, Gardner 2024 – J. Tanner, A. Gardner (eds.), *Materialising the Roman Empire*, London, 2024
- Timofan 2005 – A. Timofan, „Un fascinum descoperit în Colonia Aurelia Apulensis. Oculus malignus și rolul apotropaic al amuletelor falice”, *Sargetia*, 33, 2005, p. 205-215
- Timofan, Buta 2023 – A. Timofan, A. Buta, „Domus I. Thermae. O vizită în casa lui Venus de la Apulum”, *Limes. Frontierele Imperiului Roman din România*, 13, 2023, p. 24-31
- Timofan, Ota 2010 – A. Timofan, R. Ota, „Capul unei statui de cult aparținând lui Iupiter tronans descoperit la Apulum”, *Pontica*, 43, 2009, p. 251-266
- Timofan et alii 2018 – A. Timofan, C. Șuteu, R. Ota, G. Bounegru, I. Lascu, R. Ciobanu, D. Anghel, C. Pavel, D. Burnete, „PANTHEON 3D. An Initiative in the Three-Dimensional Digitization of Romanian Cultural Heritage”, *Studia UBB Digitalia*, 63, nr. 2, 2018, p. 65-83
- Țeposu-Marinescu, Pop 2000 – L. Țeposu-Marinescu, C. Pop, *Statuete de bronz din Dacia romană*, București, 2000
- Urciuoli 2020 – E. Urciuoli, „Citification of Religion: A Proposal for the Historical Study of Urban Religion”, *Religion and Urbanity Online*. Berlin, Open Access, 2020 <https://doi.org/10.1515/urbrel.12124596>
- Van Alten 2017 – D. Van Alten, „Glocalization and Religious Communication in the Roman Empire: Two Case Studies to Reconsider the Local and the Global in Religious Material Culture”, *Religions*, 8, 2017, p. 1-20

- Wiegels 2014 – R. Wiegels, „Zwei bemerkenswerte Bronzestatuetten des Sol mit Inschrift”, *Acta Musei Napocensis*, 51/1, 2014, p. 121-132
- Wollmann 1977 – V. Wollmann, „Activitatea arheologico-epigrafică a lui Ignatius Reinbold pe cuprinsul județului Alba”, *Apulum*, 15, 1977, p. 671-680
- Wollmann 1983 – V. Wollmann, *Briefe zur Geschichte der siebenbürgischen Altertumskunde*, Bukarest, Kriterion, 1983
- Zefleanu 1949 – E. Zefleanu, „Note epigrafice din Apulum II”, *Apulum*, 3, 1949, p. 170-178

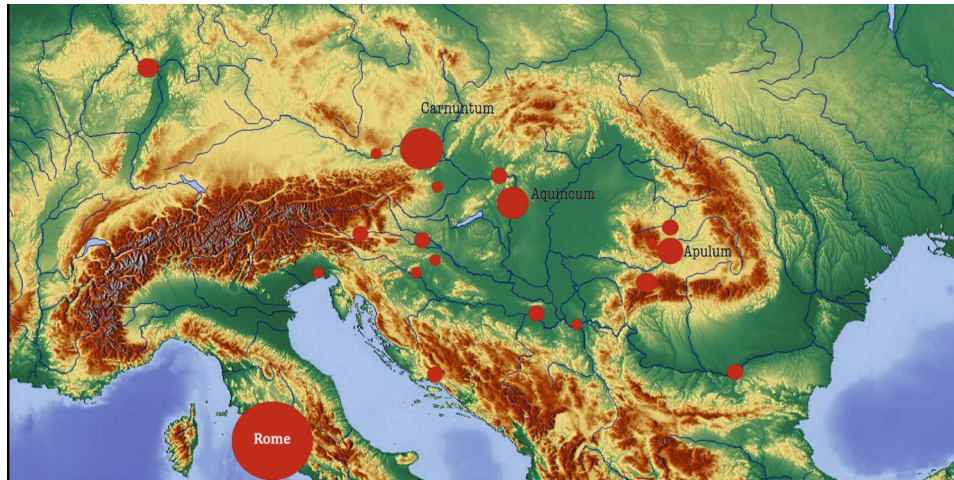


Fig. 1. Rome and the Roman cities in the Danubian, Northern and Alpine provinces with largest concentrations of votive inscriptions (after Szabó 2022, p. 113, fig. 3.8)

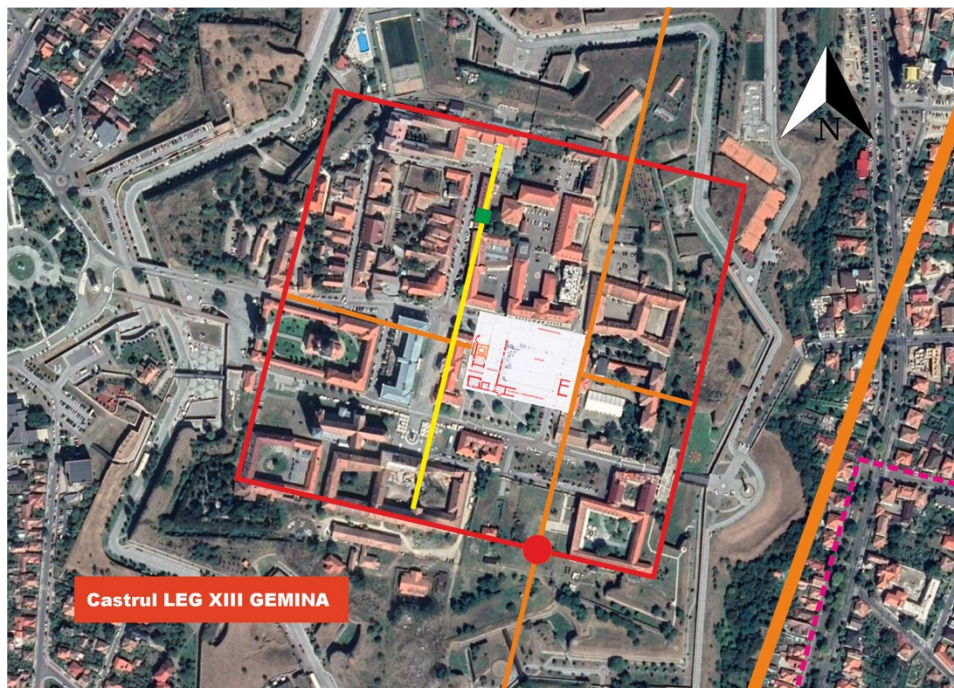


Fig. 2. Map of the Roman legionary fortress of the XIII Gemina legion in Apulum (made by A. Buta and R. Ota, July 2024; adapted after Gudea *et alii* 2015)



Fig. 3. Area of the fortress, the *municipium Septimium Apulense* and the *canabae* (author: Orsolya Gyurka)



Fig. 4. Map of the *colonia Aurelia Apulensis* (author: Orsolya Gyurka)

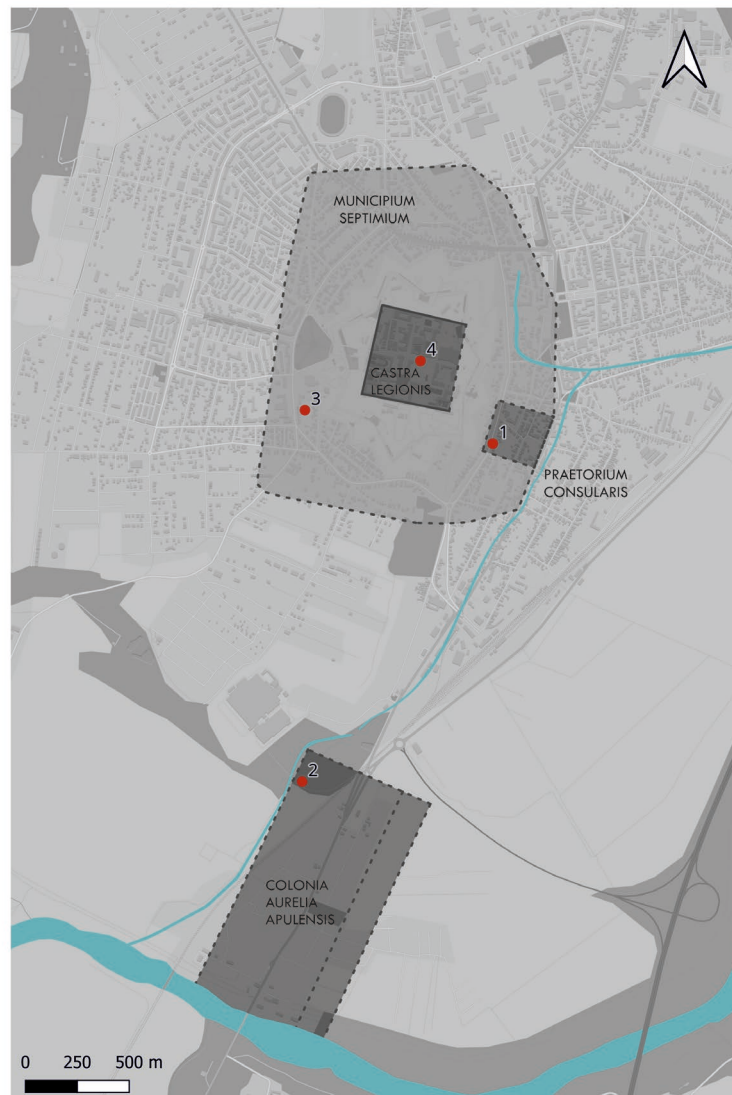


Fig. 5. General map of the conurbation in Apulum with the four archaeologically attested sanctuaries: nr. 1. sanctuaries of the *praetorium consularis*; nr. 2. Liber Pater shrine; nr. 3. Mithraeum; nr. 4. *aedes signorum* in the *principia* (author: Orsolya Gyurka)



Fig. 6. Integrated interpretation of Survey Data from the Apulum Project, coordinated by Ian Haynes, combining archival sources with magnetometry survey results (Ian Haynes, Alex Turner and Geophysical Survey Bradford Ltd), resistivity survey results (Kris Lockyear) and TST survey (Doru Bogdan, Jamie Sewell and Alex Turner), and with aerial photographic survey results stemming from The Later Prehistoric and Roman Landscape in Western Transylvania Project coordinated by W. S. Hanson (Ioana Oltean and W. S. Hanson). See also: Diaconescu, Piso 1993; Oltean 2007, p. 169, fig. 5.3.5; Haynes 2014, p. 89 and online report nr. 30 in *Cronica Cercetărilor* in year 2004: <https://cronica.cimec.ro/detail.asp?k=3055>). Map: Ian Haynes

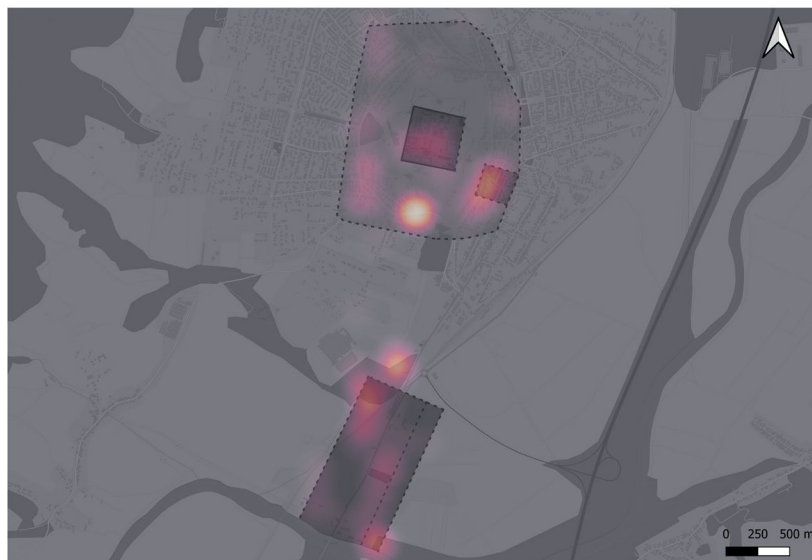


Fig. 7a. Findspots and heat-map of the finds (author: Orsolya Gyurka)



Legend

- | | |
|--------------------------------|--|
| ▲ Votive/ magical inscriptions | ● Stone reliefs |
| ▲ Votive/ magical inscriptions | ● Stone reliefs |
| ◆ Stone statues and statuettes | ■ Bronze and silver statues, statuettes, reliefs |
| ◆ Stone statues and statuettes | ■ Bronze and silver statues, statuettes, reliefs |
| ■ Exact coordinates | ■ Approximate coordinates |

Fig. 7b. Topography of votive monuments (inscribed monuments, uninscribed statues, reliefs and bronze statuettes) of Apulum with exact (red) or approximate (yellow) coordinates (author: Orsolya Gyurka)

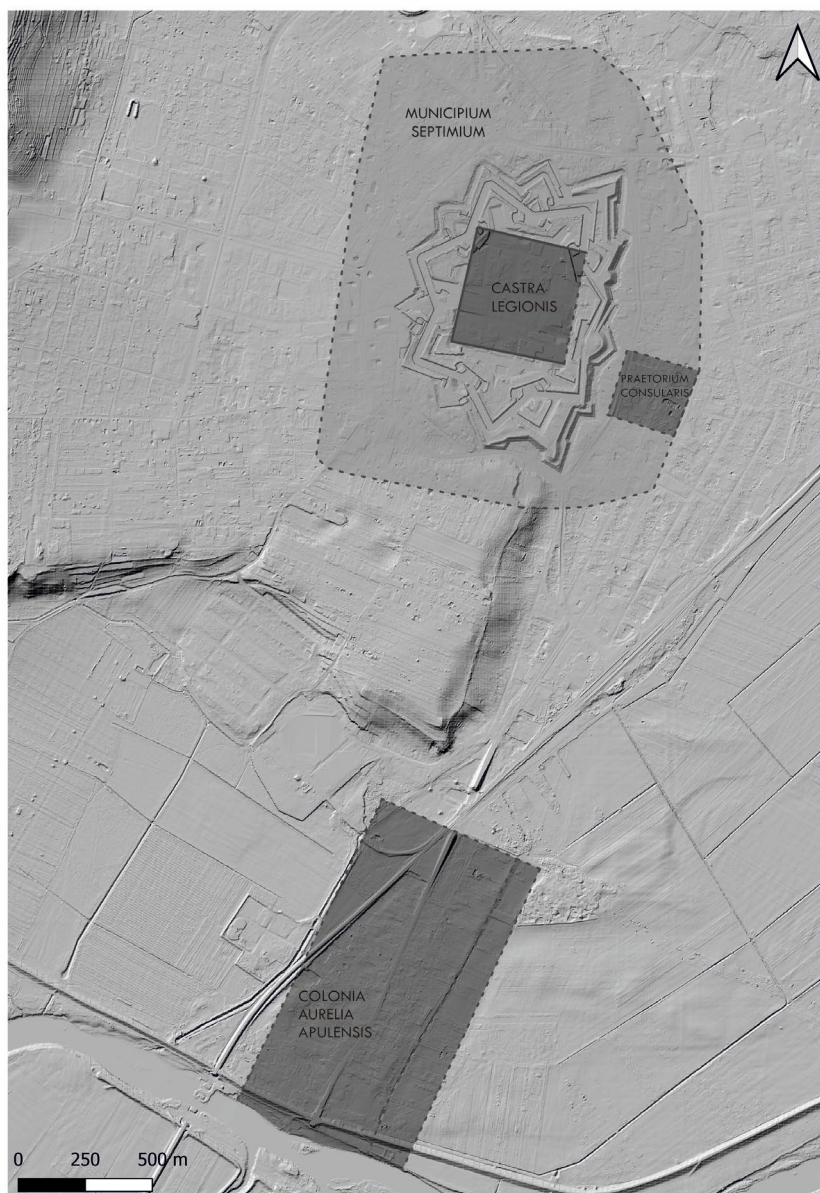
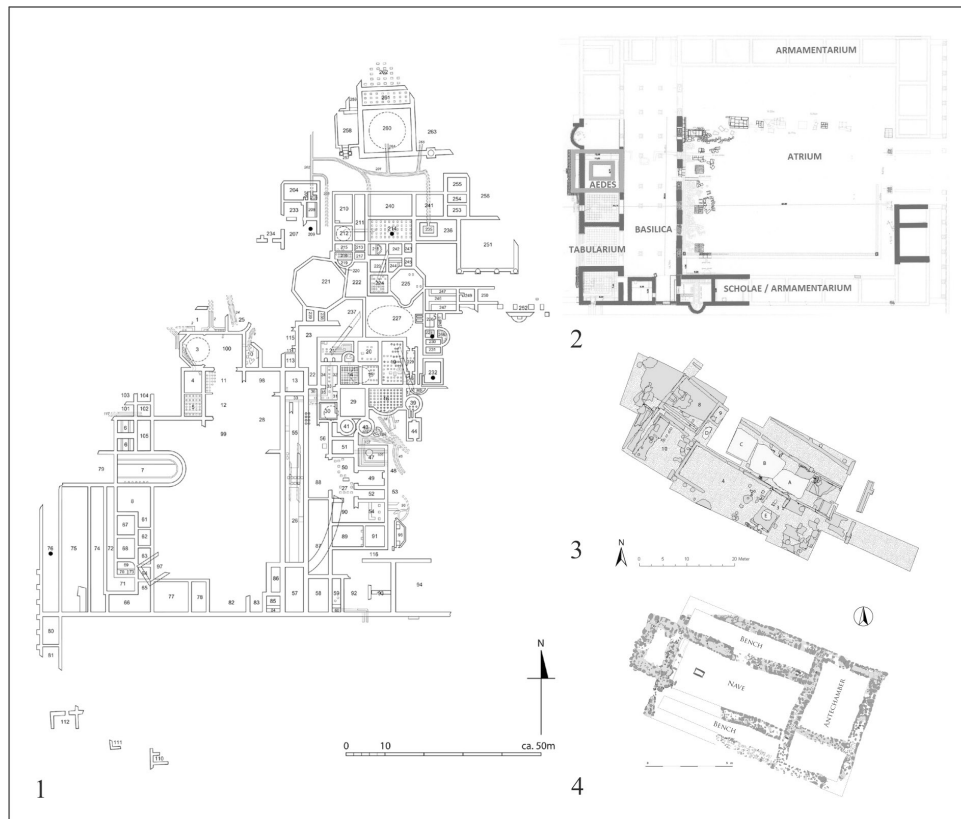


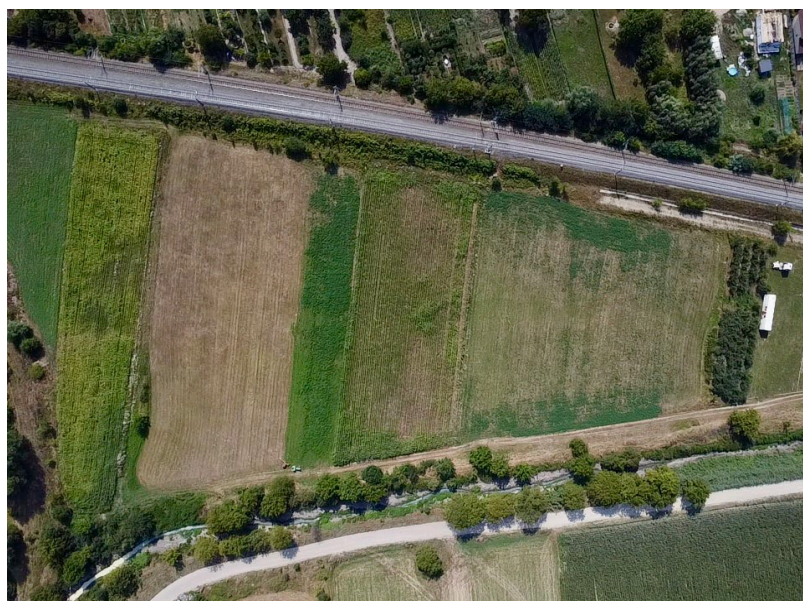
Fig. 8. Topography of the Roman conurbation of Apulum on the LiDAR map of LOKI II project. We are thankful for dr. Ileana Spiroiu and the team of the ANCPI (Agenția Națională de Cadastru și Publicitate Imobiliară) and CNC (Centrul Național de Cartografie) for their kind help. Map: Orsolya Gyurka



Plt. no. I: the plans of the four excavated sanctuaries in Apulum (after Szabó 2018, p. 24, fig. 10, p. 54, fig. 31, p. 81, fig. 38 and McCarty *et alii* 2019, p. 286, fig. 3)



1



2

Plt. no. II.1-2. Drone photography in the North-West part of the *colonia Aurelia Apulensis*, the area of the Liber Pater shrine and the Asklepieion (photos: Miruna Libiță-Partică and Ioan Muntean)



3



4

Plt. no. II.3-4. Drone photography in the North-West part of the *colonia Aurelia Apulensis*, the area of the Liber Pater shrine and the Asklepieion (photos: Miruna Libiță-Partică and Ioan Muntean)



1



2

Plt. no. III.1-2. Drone photography in the Eastern wall area of the *colonia Aurelia Apulensis* (photos: Miruna Libiță-Partică and Ioan Muntean)



3



4

Plt. no. III.3-4. Drone photography in the Eastern wall area of the *colonia Aurelia Apulensis* (photos: Miruna Libiță-Partică and Ioan Muntean)

