

ACTA MVSEI APVLENSIS

APULUM LV

series *ARCHAEOLOGICA ET ANTHROPOLOGICA*

Fondator

ION BERCIU

Editor

GABRIEL T. RUSTOIU

Colegiul editorial

RADU ARDEVAN - Universitatea „Babeş-Bolyai”, Cluj-Napoca

NIKOLAUS BOROFFKA - Deutsches Archäologisches Institut, Berlin

DANIEL DUMITRAN - Universitatea „1 Decembrie 1918”, Alba Iulia

NICOLAE GUDEA - Cluj-Napoca

VALER MOGA - Universitatea „1 Decembrie 1918”, Alba Iulia

CHRISTOPHER F. E. PARE - Universitatea „Johannes Gutenberg”, Mainz

ZENO KARL PINTER - Universitatea „Lucian Blaga”, Sibiu

MARIUS PORUMB - Institutul de Arheologie și Istoria Artei, Cluj-Napoca

VOLKER WOLLMANN - Obrigheim

Colegiul de redacție

HORIA CIUGUDEAN - director

RADU OTA - secretar de redacție

GEORGE BOUNEGRU - membru

CONSTANTIN INEL - membru

Adresa de corespondență:

MUZEUL NAȚIONAL AL UNIRII

510010 ALBA IULIA

Str. Mihai Viteazul, 12-14

Tel. 0258/813300

revista.apulum@yahoo.com

www.mnuai.ro; www.muzeuluniriialba.ro; www.anuarulapulum.ro

Correspondence address:

MUZEUL NAȚIONAL AL UNIRII

RO – 510010 ALBA IULIA

Mihai Viteazul St., 12-14

Tel. (+40) (258) 813300

© 2018 MUZEUL NAȚIONAL AL UNIRII, ALBA IULIA

ISSN – 1013-428X

ISSN – 2247 – 8701

ISSN-L – 2247 – 8701

ACTA MVSEI APVLENSIS

APVLVM

LV

series *ARCHAEOLOGICA ET ANTHROPOLOGICA*



ALBA IULIA

MMXVIII

Tehnoredactare: RADU OTA

Traducerea și verificarea textelor în limba engleză: ADINA GOȘA

Textele nepublicate nu se restituie.

S U M A R

CONTENTS – SOMMAIRE – INHALT

STUDII – STUDIES

SABIN ADRIAN LUCA, HORIA CIUGUDEAN, O depunere rituală aparținând culturii Petrești descoperită la Uioara de jos <i>A ritual deposition assigned to the Petrești culture found at Uioara de jos</i>	9
MIHAELA-MARIA BARBU, MIHAI GLIGOR, Industria litică cioplită aparținând grupului cultural Foeni din situl de la Alba Iulia- „Lumea Nouă” (jud. Alba) (I) <i>Chipped lithic industry belonging to Foeni cultural group from Alba Iulia - Lumea Nouă archaeological site (Alba county) (I)</i>	23
CRISTIAN IOAN POPA, Through the darkness of prehistory. The pyxis or the Coțofeni oil lamp from Gheja <i>Prin întunericul preistoriei. Pyxida sau candela Coțofeni de la Gheja</i>	57
CAROL KACSÓ, Așezarea din epoca bronzului de la Oarța de Sus – Dealul Stremțului <i>Die Bronzezeitliche Siedlung von Oarța de Sus – Dealul Stremțului</i>	67
MARIUS-MIHAI CIUTĂ, Un colier din aur cu pandantive și o pereche de cercei, din aur, din situl cetății dacice de la Căpâlna (com. Săsciori, jud. Alba) <i>A golden necklace with pendants and a pair of golden earrings From Dacian fortress Căpâlna (Săsciori village, Alba county)</i>	87
RADU CIOBANU, Pictorul roman la lucru – detalii tehnice și câteva probleme de iconografie ale picturii antice de șevalet <i>Le peintre romain au travail – details techniques et quelques problemes sur l’iconographie de la peinture antique de chevalet</i>	125
CĂTĂLIN PAVEL, The only Icarus statuette from Dacia: a military appropriation of the Icarus myth? <i>Singura statueta a lui Icar din Dacia: mitul lui Icar în mediul militar?</i>	155
FLORIN CIULAVU, MIHAELA BLEOANCĂ, Contribuții la studiul	

	sectorului sudic al canabelor romane de la Apulum / <i>Municipium Septimium Apulense</i> . Raport preliminar privind cercetările arheologice preventive de la Alba Iulia, str. Izvorului, nr. 5 <i>Contributions to the study of the southern sector of Roman canabae from Apulum / Municipium Septimium Apulense. Preliminary report on preventive archaeological research from Alba Iulia, str. Izvorului, no. 5</i>	171
MIHAELA BLEOANCĂ,	Instrumente medicale descoperite recent la Apulum <i>Medical instruments recently discovered at Apulum</i>	219
ADRIAN COSMIN BOLOG, OVIDIU MAXIM OARGĂ,	O nouă cercetare în necropola romană de la Apulum, Dealul Furcilor-„, Podei“ <i>A new research in the Roman necropolis from Apulum, Dealul Furcilor - „, Podei“</i>	229
DAN ANGHIEL, GEORGE VALENTIN BOUNEGRU,	O stelă funerară descoperită la Ighiu, jud. Alba <i>A funerary stela discovered at Ighiu, Alba county</i>	251
AUREL DRAGOTĂ, MIHAI BLĂJAN,	The military entourage of Gyula as shown by the burial place in Alba Iulia – Izvorul Împăratului (10 th -11 th century) <i>Anturajul militar al lui Gyula ilustrat de cimitirul de la Alba Iulia – Izvorul Împăratului (sec. X-XI)</i>	259
AUREL DRAGOTĂ, VALENTIN DELEANU, GABRIEL TIBERIU RUSTOIU, ANCA MATIȘ, MIHAI BLĂJAN,	Tipologia inventarului din cimitirul de la Alba Iulia - Izvorul Împăratului (sec. X-XI) <i>The categorization of the funeral artefacts from Alba Iulia – Izvorul Împăratului cemetery site</i>	325
MONICA-ELENA POPESCU,	Considerații privind un pandantiv bizantin de la Alba Iulia - Izvorul Împăratului <i>Observations about a Byzantine pendant from Alba Iulia - Emperor's Spring</i>	353
LAURA MAGDAN, AUREL DRAGOTĂ,	Cercetările arheologice de la Alba Iulia - Canton C.F.R. (1961-1962) <i>Archaeological excavations from Alba Iulia - Canton C.F.R (1961-1962)</i>	361
RADU OTA, CRISTIAN TITUS FLORESCU, BOGDAN PÂCLIȘAN,	Alba Iulia și invaziile turco-tătare din anii 1658 și 1661, reflectate prin descoperiri arheologice recente <i>Alba Iulia and the Turkish-Tartar invasions from 1658 and 1661, reflected by recent archaeological discoveries</i>	379

RESTAURARE – CONSERVARE – INVESTIGAȚII
RESTORATION – CONSERVATION – INVESTIGATIONS

- SORIN ȘERBAN, Reconstituirea unei cupe din perioada romană
Restoring a bowl of the Roman period 391

RECENZII ȘI NOTE DE LECTURĂ
REVIEWS AND READER'S NOTES

- SABIN ADRIAN LUCA, Cosmin Ioan Suciu, *Cultura Vinča în Transilvania*, Bibliotheca Brukenthal XLIV, Sibiu, 2009, Editura ALTIP, ISBN 978-973-117-250-7 397
- CRISTINEL FÂNTÂNEANU, Ion Tuțulescu, *Perioada de tranziție spre epoca bronzului în zona deluroasă și montană a Olteniei*, Tg. Jiu, Ed. Măiastra, 2016, 280 pagini, 83 figuri, 5 hărți 417
- RADU OTA, Mihai Chiriac, *Bazinul Târnavelor în epoca romană*, Mediaș, Iași, Editura Studis, 2016, 232 pagini, 23 figuri color 421
- FLORIN CIULAVU, Carmen Maria Petolescu, *Daco-Moesica. Studii de numismatică și gliptică*. Ediție îngrijită de Constantin C. Petolescu și Ștefan Vasiliță, București, Editura Academiei Române, 2017, 364 p 425
- RADU CIOBANU, P. Wilkinson, *Pompeii – An Archaeological Guide*, London, New York, 2017, 240 pag., 32 planșe color, 60 fig. alb negru 427
- RADU OTA, Iosif Vasile Ferencz, *Muzeul din Deva. Arc peste timp*, Cluj-Napoca, Editura Mega, 2017, 166 pagini 429
- RADU OTA, Horațiu Groza, *Muzeul de Istorie din Turda (1943-2013)*, Cluj-Napoca, Editura Grinta, Editura Risoprint, Cluj-Napoca, 2013, 137 pagini, 103 imagini alb-negru și color 433
- Lista autorilor 437

**THE MILITARY ENTOURAGE OF GYULA AS SHOWN BY THE
BURIAL PLACE IN ALBA IULIA - *IZVORUL ÎMPĂRATULUI* (10TH-11TH
CENTURY)**

Aurel DRAGOTĂ
Universitatea "Lucian Blaga" Sibiu
Mihai BLĂJAN
Muzeul Național al Unirii Alba Iulia

Cuvinte cheie: secolul X, Transilvania, Alba Iulia, Gyula, războinici, maghiari, armament, harnașament, suită militară.

Key words: 10th century, Transylvania, Alba Iulia, Gyula, warriors, Hungarians, armament, harness, military suite.

The surface surveys undertaken in the spring of 1981 and in the following years on the edge of the second terrace of Mureș River, in the places called "Izvorul Împăratului/Crăcuta", situated at south-west from Alba Iulia city lead to the identification of an Early Middle Ages cemetery (10th-11th centuries). During the systematic excavation started in 2001 and continued in 2005-2008, numerous archaeological features were unveiled: Bronze Age and Hallstatt pits; a construction of stone sub-structures and household appendixes from Roman Period; deposit and household pits from The Prefeudal Period/Post-roman and 212 Early Middle Ages graves.

The funeral features contain children, adolescent and adult skeletons, of both sexes, placed dorsal decubitus and more rarely in crouched position. Most of the graves contain inventory pieces: iron and bronze pieces (fire strikers, knife blades, tweezers), flint, spindle whorls, weapons (remains of quivers, bone applies form arcs, arrows, axe, Säbelschwert), relic crosses, garnishments and clothing accessories (belts, buttons, girdles, earrings, finger nails, loop rings, rings with one extremity in S shape, rows of glass beads, onyx and kaolin, Cypraea Moneta, perforated Roman coins, bracelets), offering pots and a coin issued by King Stefan I. The food offering is being represented by horse remains (the skull and members), the skeleton of domestic bird (chickens) and egg remains.

The official excavation reports, published by the archaeologist M. Blăjan, contained some details regarding the funeral rite and ritual, without mentioning anywhere the existence of a Hungarian warrior grave, with the afferent inventory. Although, the preserved journals, record this fact, and a part

of the burial graves from Izvorul Împăratului, can be framed in this category: M. 115, M. 133, M. 143, M. 144, M. 165, M. 168, M. 173, M. 177, M. 184, M. 208 and M. 210. As an example, M. 115, which belongs to an adult-mature male, was attributed to a Pecheneg warrior. These warrior graves, are to be added to the ones unveiled by the author, with the occasion of the archaeological researches from 2014¹.

Description of the burial pits and the grave goods:

M. 115/S. XII. Depth = - 0.62-1.18 m, length = 2.25 m, width = 0.76-0.78 m, skeleton length = 1.66 m, O = W (skull) - E (**Fig. 3/a-b**). A square-shaped pit with vertical walls and a westwards leaning ground (the skull is placed lower than the feet). The deceased's skull had fallen to the left and its cranial calotte was crushed. The jawbone and the chin were rested on the left shoulder. The right forearm was bent from the elbow and laid with the palm on the abdomen. The palm's bones were placed on the left hip. The left forearm was also bent from the elbow and placed in an upward position, on the shoulder, with the palm's bones on the sternum in anatomic connection to each other. The thorax's bones, the backbone, and the hips were macerated. Remains from the collarbone, ribs, and vertebrae were unearthed. A river stone was found in the south-western pit corner and an ancient brick fragment was laid in an inclined position. An ill-carved parallelepiped limestone block (45 x 33 x 86 cm) was placed in the western pit half. It was inclined, with a northern oriented depth between - 0.44-0.57 m. Charcoal pieces were found in the south-western corner, near the skull.

Burial goods:

Metallic quiver fixture (height = 97 cm; base diametric line = 17 cm), two arrowheads / right foot, inclined from the foot to the left thigh-bone.

1. Six highly corroded rod fragments with rhombic shaped heads and a straight vertical profiled rhombic head (**Fig. 3/1**; height = 12.52 cm, width = 1.44 cm, thickness = 0.20 cm) / between the thigh bones.
2. Nail fragment with a deformed head, covered in rust and brown rotten wooden remains (**Fig. 3/2**; height = 2.15 cm, width = 0.48 cm, thickness = 0.25 cm).
3. Fragment from a corroded bar with an oval-shaped transversal cross-section (**Fig. 3/3**; height = 3.37 cm, width = 0.85 cm, thickness = 0.24 cm).
4. Broken nail slimed head (**Fig. 3/4**; height = 1.02 cm, thickness = 0.32 cm).
5. A three pieced iron circle frame with a nail on its upper end, broken side ends, with brown wooden remains on the inside and strong oxide remains on the outside (**Fig. 3/5**; height = 9.60 cm, width = 1.26 cm, thickness = 0.25 cm).

¹ Dragotă *et alii* 2015, p. 321-349.

6. Half a circle with a three-pieced broken blade that was equipped with a rivet on one of its ends. The latter was highly corroded (**Fig. 3/6**; height = 7.20 cm, width = 1.32 cm, thickness = 0.35 cm) / between the cannon bones.
7. Semi-circular iron blade (**Fig. 3/7**), broken in four different sized pieces (1.52 cm, 6.49 cm, 3.67 cm, 5.95 cm; diameter = 17.80 cm; width = 1.18-1.73 cm; thickness = 0.28-0.36 cm). The blade is covered on the inside of the semicircle with a fine wooden layer and the outside was highly corroded and uneven with narrow ends (1-1.18 cm), wide middle section (1.73 cm) with nails within its cross-section. The nails were designed to hold the circle on the wooden frame (1.10-1.62 cm).
8. Arrow with a cone-shaped thorn, that was covered in high mold (3.66 cm), cylinder-shaped body and pyramid-shaped head (2.10 cm), with a rhombic cross-section (**Fig. 3/8**; height = 10.44 cm, width = 0.62 cm, thickness = 0.38 cm, head's height = 2.28 cm).
9. Arrow with triangle-shaped flat thorn, covered with a fine mold layer. Its width measures 5.5 mm and presents a taper-shaped body with a crossing bar towards the flattened arrowhead. The latter has a wide base and a narrow side bent head (**Fig. 3/9**; height = 10.50 cm, thorn's height = 3 cm).
10. Nail from a quiver designed with a four-sided flower. The nail was covered in brown wood mold (**Fig. 3/10**; height = 2.45 cm).
11. Middle-sized simple ringlet with non-jointing heads overlapping each other, oval-shaped link made either from a wire with square-shaped cross-section or from a gold rhombic wire (?) (**Fig. 3/11**; 1.14 x 1.31 cm, thickness = 0.19 cm) / beneath the skull.
12. Highly corroded iron lighter, with one arched extremity, found broken, covered in patches with brown-yellow molded wooden fragments, with curved arms, symmetric and close arched ends, a triangle shaped head widened towards the inside of the bar (**Fig. 3/12**; height = 7.20 cm, width = 2.82 cm, thickness = 0.67 cm).
13. Iron nail, without a flower, with sharpening head (**Fig. 3/13**; height = 1.71 cm).
14. Short iron nail with triangle shaped jutting flower and a short body covered in brown mold (**Fig. 3/14**; height = 1 cm).
15. Two fragments from a bar with rhombic head were also found: part of the flat rod arched on the inside and semicircular on the outside (**Fig. 3/15**; height = 4 cm, width = 0.5 cm, thickness = 0.25 cm). Another fragment of a rhombic blade crossed by a 1.20 cm long nails with a rivet at its external end (blade's height = 3.50 cm, total height = 7.50 cm).
- 16-17. A four-piece broken circle shaped like a blade with a bent outer end, with an iron nail at each extremity. The blade's width is wider at the extremities and

narrower in the central part (**Fig. 3/16-17**; height = 10.85 cm, width = 1.50 cm, thickness = 0.25 cm).

18. Smokey chalcedony made lighter with a concave face, with sloping sides and a back side furrowed by flat sockets, with side fields showing sloping breakage, triangle shaped cross section with rounded corners (**Fig. 4/18**; height = 3.50 cm, width = 2.50 cm, thickness = 1.72 cm) / left side of the pelvis.

19. Arch bone fragments: two white-yellow fragments from the plates middle part with a concave-convex cross-section. These were broken from a plate measuring a width of 2.18 cm, thickness = 0.23 cm, height = 6.74 cm (**Fig. 4/19**).

20. A fragmentary plate broken from the niche level with its opposing head broken and lost, made from white-yellow bone, with a slightly convex side and another one being straight, with an oval-shaped extremity and a convex-concave cross-section and a polished surface (**Fig. 4/20**; height = 11.50 cm, width = 1.80 cm, thickness = 0.15 cm) / above the pelvis on the right side.

21. Longitudinal sectioned bone plate, from the diaphysis of a long bone, with a concave edge obliquely crafted/cut and another one concave, with an oval-shaped fixing niche placed on the arch and a curved vertical profile, with the wider end broken and the opposing extremity rounded and a concave-convex cross-section / (**Fig. 4/21**; height = 13.50 cm, width = 1.92 cm, thickness = 0.29 cm).

22-24. Three distribution bronze belts identical in shape and similar in size. The circular basis has an inclined edge and a flat upper part. Three spokes are coming together in the middle central field. The front part of each spoke is decorated by means of a long fillet that is sharpened at the opposing extremity. The opposite spokes' side is flat-concave (**Fig. 4/22-24**; height = 3.55 cm, bar's width = 0.40 cm, thickness = 0.44 cm; height = 3.52 cm, bar's width = 0.44 cm, thickness = 0.45 cm; height = 3.50 cm, bar's width = 0.39 cm, thickness = 0.40 cm). One of the three dividers shows fine thread textile remains, two of them sewn between the thigh-bones and a third one on the outside of the right calf.

25. Lyre-shaped bronze buckle with a broken iron thorn illustrated by the flattened ring revolving around the bar. This piece consists of two elements: the tongue, shaped as a hemisphere-like frame with a wide bar (0.40 cm) and a thickness of 0.23 cm, placed perpendicular on the cone-shaped extremities of the side-arms, and the elliptic belt frame, with a knot located where the thorn's head is being supported. The two frames intersect on the middle line where the lower thorn's end is also located (**Fig. 4/25**; height = 3.90 cm, frame's width = 2.83 cm, tongue width = 2.65 cm, bar's width = 0.45 cm, bar's thickness = 0.38 cm) / on the outside of the right calf.

26. Fragmentary bone perforator with a ground sharp end broken in the middle and at the thick extremity (**Fig. 4/26**; height = 14.32 cm, diameter = 1.40 cm) / the right upper half of the humerus.

27. A rod with an upper rhombic end, equipped with a broken and lost fixing nail, consisting in four fragments with an internal flat side and a semicylindric outer one (**Fig. 5/27**; height = 10.75 cm, width = 0.98 cm, thickness = 0.48 cm).

28. A bar with wide ends (length = 1.21 cm) and a slim middle part (0.48 cm) arched and ear-shaped where it was supposed to be attached to the belt, equipped with a bent and slimed nail at one end (**Fig. 5/28**; height = 12 cm) / between the cannon bones.

29. The upper half of the rhombic head and a bar rod, covered in rust, very fragile, disposed with a rivet/nail, covered in rot (**Fig. 5/29**; nail's height = 1-1.05 cm, height = 7 cm, width = 0.90 cm, thickness = 0.38 cm).

30. Fragment from a bar rod with a flattened internal side and an outer semi-cylindrical one, bent at one end (**Fig. 5/30**).

31. Short rivet with rhombic flower and cylindrical body covered in rot (**Fig. 5/31**; height = 1.14 cm).

32. Short rivet (**Fig. 5/32**; 0.84 cm) with multiangular flower covered in rot.

33-48. 16 differently shaped bronze buttons of variable sizes, consisting each of two halves jointed on their middle line (**Fig. 5/33-48**). Each button consists on a hollow sphere and a binding earlet. The sphere is mostly round-shaped. There are also some with their lower half flattened and the upper one tronconic, thus oval-flattened ones. The equatorial line is hardly distinguishable and the spot linking the passage to the earlet is marked – in almost all cases – through a short mount with vertical or inclined parallelepiped walls. Generally, the buttons measure a height between 13.2-15.3 mm, the sphere's diameter is between 8.4-10 mm. The round spheres' height is between 6.4-9 mm, and the flattened spheres with an oval-shaped cross-section (3 pieces) have a height between 6.7-7.3 mm. The medium or big sized earlet has an oval-shaped upper earlet with a two-sided blunt crest, rounded, rhombic and quadrangular, with curved corners. The width mostly measures between 4.8-4.9 mm and goes up until 6.2 mm; the thickness is between 1.8-3.5 mm. The round shaped orifice (13 pieces) has a diameter between 1.2-2.3 mm. This orifice can be also oval-prolonged (3 pieces), showing high registered values along the vertical axe (2.8-3.4 mm). The buttons were as such or as decoration for the wide belt by attaching the earlet on a thick thread. Their sizes may vary from one to the other:

33. Height = 1.50 cm, diameter = 0.92 x 1 cm, handle's width = 0.48 cm, handle's thickness = 0.30 cm.

34. Height = 1.49 cm, diameter = 0.90 cm, handle's width = 0.48 cm, handle's thickness = 0.27 cm.

35. Height = 1.36 cm, diameter = 0.86 cm, handle's width = 0.46 cm, handle's thickness = 0.20 cm.
36. Height = 1.43 cm, diameter = 0.92 cm, handle's width = 0.45 cm, handle's thickness = 0.19 cm.
37. Height = 1.52 cm, diameter = 1 cm, handle's width = 0.49 cm, handle's thickness = 0.35 cm. The orifice's diameter is round (1.2-1.3 mm) or oval (2.8-3.4 mm) and the oval sphere's height measures between 6.7-7.3 mm, while the round one between 6.4-9 mm.
38. Height = 1.41 cm, diameter = 0.90 x 0.91 cm, handle's width = 0.44 cm, handle's thickness = 0.1 cm, orifice diameter = 0.12 cm.
39. Height = 1.42 cm, diameter = 0.86 cm, handle's width = 0.47 cm, handle's thickness = 0.25 cm.
40. Height = 1.43 cm, diameter = 0.88 cm, handle's width = 0.45 cm, handle's thickness = 0.23 cm.
41. Height = 1.45 cm, diameter = 0.87 cm, handle's width = 0.47 cm, handle's thickness = 0.25 cm.
42. Height = 1.42 cm, diameter = 0.85 cm, handle's width = 0.46 cm, handle's thickness = 0.25 cm.
43. Height = 1.56 cm, diameter = 0.84 cm, handle's width = 0.42 cm, handle's thickness = 0.20 cm.
44. Height = 1.32 cm, diameter = 0.88 cm, handle's width = 0.62 cm, handle's thickness = 0.28 cm.
45. Height = 1.50 cm, diameter = 0.45 cm, handle's width = 0.44 cm, handle's thickness = 0.18 cm.
46. Height = 1.50 cm, diameter = 0.85 cm, handle's width = 0.60 cm, handle's thickness = 0.30 cm.
47. Height = 1.49 cm, diameter = 0.90 cm, handle's width = 0.48 cm, handle's thickness = 0.22 cm.
48. Height = 1.53 cm, diameter = 0.90 cm, handle's width = 0.52 cm, handle's thickness = 0.27 cm.

M. 133/S. II. Depth = - 0.42-0.66 m, burial pit's length = 1.96 m, burial pit's width = 0.67 m, skeleton's length = 1.64 m, orientation = W - E (**Fig. 6**). 2/3 of the southern side of the burial pit was laid out with five sandstone boulders placed in a row on the margin, from east to west. These lithic materials were designed to protect the deceased from the hip to the right heel. The plates (2) placed on the eastern end had fallen horizontally towards the pit's margin and other three ones were inclined on the inside. The left (north) side, between the shoulder and the pelvis and the thorax, was protected by two large approx. triangular river boulders found horizontally collapsed. The filling earth contains some ceramic fragments.

Adult male skeleton lying on its back, with macerated bones. The crushed and grounded skull was found fallen to its right, the jaw was on the right shoulder. Some backbone, rib and hip fragments were kept from the torso's bones. The hands were bent from the elbow and laid the left over the right one, with the palms on the hip. Other preserved bones are the humerus' diaphyses, ulna, right radius and left forearm. The feet were found parallel stretched, with *in situ* kneecaps, inside facing heels, the feet bones falling where the cannon bones end lateral but in opposition. The right foot's long bones' epiphyses were destroyed. The thigh bones' epiphyses were macerated.

Funeral inventory:

1. Grey-yellow shivers flexures with flat-concave inside and flat outside, with raw broach impress. The extremities show inclined tooled sides and the margins are inclined and leveled (**Fig. 6/1**; height = 9.32 cm, width = 2.14 cm, thickness = 1.60 cm) / to the hip's left side.
2. A 1.26 cm high corroded iron knife with short thorn and a broken head. The narrow blade with the broken head shows a maximum width (0.95 cm) thorn, a thick edge (0.35 cm) and a curved knife-edge (**Fig. 6/2**; height = 4 cm, width = 0.80-0.95 cm) / on the epiphysis, next to the left thigh-bone.
3. Arrowhead with a rhombic, highly corroded and scaled off blade showing a width of 2.30 cm, thickness of 0.32 cm, having a broken narrow extremity (height = 6.10 cm). There is a visible crossover towards the thorn. The latter is broken in two and has a cone-shaped body sharpened at the lower end, measuring a length of 3.45 cm and covered with brown rotten wood remains. Mineral textile remains are distinguishable on the blade's left shoulder (height = 9.45 cm; **Fig. 6/3**) / to the humerus' right.
4. Willow leaf-shaped iron arrow, with a broken upper blade. The blade has a length of 4 cm, a height of 2.95 cm, a slim body, a crossover towards the thorn. The short thorn has a broken head (**Fig. 6/4**) / on the epiphyses of the left thigh-bone.
5. Highly corroded iron spearhead with broken extremities, a rhombic blade with a width of 2.15 cm and a length of 4.44 cm, with scaled off-sides (thickness = 0.28 cm). An 1.16 cm iron fragment (**Fig. 6/5**; height = 5.60 cm) / to the right of the humerus has remained from the thorn.

M. 143/S. I/E. Depth = 1.07-1.10 m, burial pit's length = 2.14 m, pit's width = 0.60-0.70 m, skeleton's length = 154.5 cm, orientation = W-E (**Fig. 7**). The trapeze-shaped burial pit with straight corners contained an adult male skeleton with precariously macerated preserved remains. The broken and incomplete skull cap is in a fallen position, to the left, whereas the jaw was found *in situ*. The jaw's branches, the cheekbone and the mandible temporal bone were macerated. The torso's bones were macerated: the backbone, the sacrum, the hip and shoulder bones, the upper collarbone, the sternum and the

ribs. The lower collar bone's extremities and some ribs towards the backbone have been preserved. The hands show macerated epiphyses, they are slightly bent from the elbow and placed with the palms on the pelvis. The diaphyses, metacarpals and the phalanges are incompletely preserved. The lower members are parallel stretched with slightly distant heels, while the feet are fallen in opposition, being anatomically connected. The epiphyses both near and distant from cannon-bones and the thigh-bones are shattered, retaining only the right fibula / diaphysis. There is a brick fragment in the south-western corner, which was protecting the right shoulder and was placed on its flat side. A dark-brown stain, most probably a leather or clothing remain, was observed on the pelvis, under the quiver.

Funeral inventory:

Iron plate from the quiver / between the thigh-bones and on the stomach. There are iron bars with triangle-shaped head coming out of the plate oriented towards the knees. The lower iron quiver semicircle is strongly curved towards its inside with brown-yellow wood remains near the knee, in the direction of the right heel. Rotten brown-yellow wooden remains are seen from the heels to the pelvis, most of them between the knees and the first sacral vertebrae where the quiver was laid and paneled with metallic vertical bars.

1 a- 1 b. Three highly corroded and fragile plate fragments covered in a brown-yellow mold layer on the inside. The plate has a 0.22-0.24 cm thickness and is vertically arched, with margins curved on the inside and has a semicircular profile along its length. The plate's margins panel the top of the quiver by means of short nails beaten in wood placed at its corners. The nails were beaten right-angled or inclined all across the upper margins or the narrow side of the curved rectangle (**Fig. 7/1a- 1b**; height – 3.98-5 cm, width = 5.10-6.55 cm, nails' height = 0.18-1.28 cm).

2. The upper extremity of a two-piece bar with a wide broken triangle-shaped head (1/4) that got lost. The rod is shaped as a narrow bar with a flat side and the other flat-convex (**Fig. 7/2**; height = 6.75 cm, width = 1.76 cm, thickness = 0.10 cm).

3. Rhombic arrow with ascending shoulders towards the head, middle vein, broken thorn with only a sharp cone-shaped head in the area of the stoop (**Fig. 7/3**; height = 4.33 cm, width = 1.63 cm, thickness = 0.64 cm).

4. A bar head, triangle-shaped and broadened with a broken rivet (2 fragments) and a rod fragment (**Fig. 7/4**; height = 6.10 cm, width = 1.24 cm, thickness = 0.38 cm).

5. Two short nails united under a single flower, a shorter and narrower one covered with brown wooden mold (**Fig. 7/5**; height = 2.52 cm).

6. A bar consisting in two rods with flat-convex cross-section connected in the upper part to the blade of a circle through the rivet. The blade and the rivet are

intersecting right-angled, the bar having a curved end (**Fig. 7/6**; height = 11.1 cm, width = 2.18 cm, thickness = 0.35 cm).

7. The lower (extreme) part of a circle (3 fragments) with rotten wooden remains on the inside (the lower has inward-curved edges, maybe a broken nail at the end and mold remains on the inside = from a different bar!) / height = 2.75 cm, width = 1.36 cm, thickness = 0.38 cm. The other two circle fragments are wider and curved (**Fig. 7/7**; height = 5.33 cm, width = 1.62 cm, thickness = 0.38 cm). One fragment has textile stains on its front side. The mineralized textile remains come from a fine woven shirt.

8. Iron arrowhead with brown rot remains and a visible longitudinal vein (**Fig. 7/8**; height = 9.82 cm, width = 2.29 cm, thickness = 0.45 cm, thorn's height = 3.50 cm) / on the quiver's upper frame.

9-11. Between the inside of the thigh-bones, 20 cm from the plate, towards the knee, the quiver had two bronze shackles and a third one near the right thigh-bone, on the outside. The three shackles have a flat convexe basis an an opposite side that ended around an orifice with an ebossed stripe (**Fig. 7/9-11**; height = 3.2; 3.3; 3.4 cm; diameter = 2.46 cm; 2.50 cm; 2.54 cm; rod's width = 0.40 cm).

12. Highly corroded iron knife blade with a maximum width at the crossing to the handle and the head, a thick slightly curved towards the head edge (0.28 cm), concave middle blade, that's narrowing towards the head, a broken short thorn and a width of 0.43 cm with wooden remains / left hip (**Fig. 7/12**; height = 10.2 cm, thorn's height = 3.42 cm, blade's height = 6.78 cm).

13. 8-shaped highly corroded iron buckle designed with an iron thorn, with a frame made from a bar with four rounded edges (0.37 x 0.58 cm). The bar is curved forming a symmetric middle pointy angle. The upper frame part is narrower than the opposing side and the thorn is 4.30 cm long, with a wider end. It is also curled around the buckles narrow bar. The body is cylindrical-shaped and the head is cone-shaped. The inner side and the buckles edges show signs of textile mineralized remains (woven fine flax string) (**Fig. 7/13**; height = 4.37 cm, width = 2.93 cm, thorn's thickness = 0.52 cm) / in the inner lower third of the left thigh-bone.

14. Twisted ring made of three golden silver wires (29 G) with thick middle body, narrow ends that are apart from each other and slightly pushed to the side and an oval-shaped shackle (**Fig. 7/14**; 2.13 x 2.33 cm, thickness = 0.30 cm) / under the quiver's iron plate, next to the right hip.

15. Two fragments coming from the incomplete shackle of an iron bronze wire-made ring (**Fig. 7/15**; thickness = 0.17 cm) / in the middle of the humerus.

16. A two-sided splinter from a quartzite boulder. The splinter shows a triangle-shaped cross-section with a natural flat side. The splinter's brown sides show remains of iron oxides / associated with the lighter (**Fig. 7/16**).

17. Iron lighter, representing one half from a whole piece, with a body made from an iron four-sided bar, highly corroded. The middle part is broadened through beating and narrowed at its lower part, has an outer edge consisting in two sides cut in an obtuse angle. The bar's body arches strongly and forms the tools finished arm with an outside arching curved end (**Fig. 7/17**; height = 6.43 cm, width = 3.87 cm, thickness = 0.70 cm, bar's width = 0.27-2.25 cm) / on the left hip.

18. Semi-circular blade coming from a semicircle. The blade is broken into four broad pieces with straight edges, disposed with rivets/fixing nails within the quiver's wooden body (**Fig. 8/18**; height = 17.90 cm, width = 1.64 cm, thickness = 0.35 cm, nails' height = 1 cm). The nails are bent sideways on their inside and the inner circle side is covered in rot.

19. The middle part from the circle's blade, broken in three pieces, two of them being arched and one is designed with a short fixing rivet within the quiver's body. One of the fragments has slightly inward arched edges and the other two have an inner flat side (**Fig. 8/19**; height = 11.06 cm, width = 0.85 cm, thickness = 0.28 cm).

20. Rhombic head blade, broken into four fragments, with nail remains. Two of the latter have upwards curved margins shaped as a fillet. These belong to a different blade with a curved end and rich rot remains (**Fig. 8/20**; height = 2.52 cm, width = 1.12 cm, thickness = 1.18 cm; height = 1.23 cm, width = 1.22 cm, thickness = 0.37 cm). The other two parts have a flat inner side covered with a rot layer (height = 3 cm, width = 1.50 cm, thickness = 0.38 cm; height = 3.02 cm, width = 1.58 cm, thickness = 0.24 cm).

21. A bar with a rhombic shaped head, broken in four pieces with upwards bent margins, with fixing nails in the quiver's wooden body and rot on the fillet's inside; the pieces show a slight arching (**Fig. 8/21**; height = 3.52 cm, width = 1.50 cm, thickness = 0.40 cm; height = 3.60 cm, width = 1.24 cm, thickness = 0.25 cm; height = 3.50 cm, width = 1.02 cm, thickness = 0.25 cm; height = 2.70 cm, width = 1.60 cm, thickness = 0.47 cm).

22. The angle head from a bar, fixed through a rivet to a 0.77 cm wide circle. These are overlapping each other and forming a right angle (**Fig. 8/22**; height = 2.75 cm, width = 0.98 cm, thickness = 0.40 cm).

23. The rhombic head of a bar, flat on the inside, with a broken and lost rivet with a part from the bar (**Fig. 8/23**; height = 3.50 cm, width = 1.70 cm, thickness = 3 cm).

24. Fragment from the circle's blade, flat on the inside, with curled edges (**Fig. 8/24**; height = 1.88 cm, width = 1.89 cm, thickness = 0.34 cm).

25 a-c. 16 small iron splinters were recovered from the quiver's metallic pieces. These splinters were atypical ones, they were detached by exfoliating and showed rotten wood and rost remains. Three of these were drawn. Oval

triangular shaped splinter, sharp heads, thick back, curled-concave blade, (**Fig. 8/25c**; height = 2.93 cm, width = 0.80 cm, thickness = 0.33 cm). A fragment from the thick blade of a double vertical exfoliated circle (**Fig. 8/25a**; height = 3.10 cm, width = 1.48 cm, thickness = 0.54 cm).

26. An ear, fragmented in the middle part of the bar. The belt was pulled through this ear, outwards arched, with a flat inside and a convex outside, corroded, with upper broadened head (**Fig. 8/26**; height = 3.90 cm, width = 1.30 cm, thickness = 0.44 cm).

27. A part from a blade broken into 4 fragments of different shapes and sizes, with a flat inside and an outside covered in iron oxides (**Fig. 8/27**; height = 6.94 cm, width = 1.32 cm, thickness = 0.43 cm).

28. A bar with a blunt head, rhombic margins, unevenly curled, with a broad stern (**Fig. 8/28**; height = 8.70 cm, width = 1.85 cm, thickness = 0.42 cm).

29a-h. Whole and fragmentary nails, most of them covered with brown rot. Some of them are short and have a riveted head (0.93 cm). Others have a long head, sharp, with a missing flower (**Fig. 8/29a-h**; height = 1.34-2.10 cm).

30. Three plate sheet fragments. The former is flat, covered with a rot layer on the inside and corroded on the outside (**Fig. 8/30**; height = 1.92 cm, width = 1.84 cm, thickness = 0.5 cm; height = 2.12 cm, width = 2.10 cm, thickness = 0.60 cm; height = 2.86 cm, width = 1.71 cm, thickness = 0.44 cm). A fragment from the base of the rhombic head designed bar (**Fig. 8/30d**; height = 2.26 cm, width = 0.75-2.23 cm, thickness = 0.5 cm).

31. Plate sheet fragment (circle) with a rotten wood layer covered on the opposite side with atypical solidified iron ash formations. These are beak-shaped formations with an uneven surface; a rectangle (0.53 x 1.75 cm) coming from a flax woven mineralized textile remain (shirt) has been found on one margin of the outer surface; other two canvas patches are visible at the end of this formation (**Fig. 8/31**; height = 2.60 cm, width = 2 cm, thickness = 1.75 cm).

M. 144/S. II/E. Depth = - 0.54-0.96 m, pit length = 2.14 m, pit depth = 0.63-0.66 m, skeleton length = 1.58 m, orientation = W-E (**Fig. 9**). The rectangular burial pit had rounded corners. The adult male was placed on the back, showing a precarious thorax's conservation state. The epiphyses near the humerus bones, the right forearm bones, the upper collarbones' ends, the vertebrae, the bilateral lower ribs, the hip bone, the bilateral thigh-bone head decomposed, macerated and destroyed. The other bones are relatively good preserved (the left arm and the lower members). The skull with the complete skull-cap is slightly inclined to the right side, with the jaw-bone fallen in the chest. The arms have slightly side-bent elbows, forming an obtuse angle, with the palms placed on the pelvis. The palms' bones are incomplete, they are on the epiphyses close to the right thigh-bone and the left hip bone. The lower members

are stretched out; the knees are close to each other; the heels are parted, with the feet in anatomical connection from the left cannon bone to the right side.

Funeral inventory:

A cluster of five rhombic arrows placed on the upper side of the left thigh-bone (**Fig. 9/1-5**):

1. Arrowhead with a rhombic blade, with shoulders elevated towards the head, uneven in the lower part, with short thorn and broken head (**Fig. 9/1**; height = 6.18 cm, width = 2.14 cm, thickness = 0.32 cm, blade's width = 4.85 cm).
2. Arrowhead with a broken, missing blade, shoulders elevated towards the head with a middle vertical rift and passing threshold towards the sharp thorn at the end of it (**Fig. 9/2**; height = 7.12 cm, width = 2.30 cm, thickness = 0.25 cm, blade's height = 4.77 cm).
3. Arrowhead with a rhombic blade, the shoulders above the blade's half, middle vertical rift, threshold, broken, incomplete thorn (**Fig. 9/3**; height = 5.64 cm, width = 2.22 cm, thickness = 0.22 cm, blade's height = 4.8 cm).
4. Arrowhead with rhombic blade, shoulder towards the thorn, middle vertical rift, broken thorn (**Fig. 9/4**; height = 7.68 cm, width = 2.12 cm, thickness = 0.38 cm, blade's height = 5.3 cm).
5. Arrowhead with a rhombic blade, elevated shoulders in the upper third, middle vertical rift, a short thorn with a narrow end, no threshold (**Fig. 9/5**; height = 7.65 cm, width = 2.22 cm, thickness = 0.21 cm).
6. Bronze iron wire made ringlet with oval body and slightly departed ends / near the right hip (**Fig. 9/6**; diameter = 2 cm, thickness = 0.14 cm).
7. Bronze iron wire made ringlet fragment / near the right knee (**Fig. 9/7**; height = 0.95 cm, thickness = 0.10 cm).
8. Ring made out of a wide ribbon (0.93 cm, thickness = 1 mm), convex on the inside and concave on the outside with vertically overlapping ends (**Fig. 9/8**) / 3rd phalange from the left hand.
9. A ring made out of two simple bronze wire shackles with an oval-shaped body and non-jointing ends (**Fig. 9/9**; 2.20 x 2.40 cm; gr. = 0.14 cm) / six fragments / 3rd phalange from the right hand.

M. 165/S. IV. Depth = - 0.44-0.80 cm, skeleton length = 1.78 m, orientation = ENE (skull)-WSW (**Fig. 10/a-b**). An inclined horse's hoof and two phalanges have been unearthed in the SE corner at a 9 cm depth and skull portions belonging to a horse have been unearthed in the NW corner at a 25 cm depth. The burial pit has a trapezoidal shape with northern slightly arched corners (1.08/1.16 x 2.66 m). Adult male skeleton laid on the back, in a precarious conservation condition. The skull with the broken skull cap is slightly inclined to the left; the under-jaw is fallen on the chest. The thorax's bones (vertebrae, ribs, sternum, and shoulder blades) were decomposed. The left arm was stretched along the body and the right forearm was shattered in an unknown

position. The humerus bone and splinters from the left forearm's diaphyses have been preserved. The lower members were stretched; thigh-bones and cannon bones' diaphyses were also preserved and were overlapping each other in their lower half. Four cut horse's members were disposed on a 75-82 cm long base placed in the WSW pit's end at a depth of - 0.4 cm. Three of these were overlapping themselves in the SW corner and another was placed inclined East of the first three. The horse's skull and a cervical vertebra with its knuckle were laid in the NW corner at - 0.25 cm. The former was placed with the skull cap upwards, the mouth to the West, slightly inclined to the right and the check bones parted from each other in the detail area. The feet's shanks and the skull were found after removing the horse's bones (feet and skull). Birds' eggshells were found when the bones were taken out and remain from another egg were found 5 cm away, to the left of the skull cap. Coal remains were visible in the filling earth above the pelvis.

Funeral inventory:

1. Battleaxe with a vertical curved convex profile and a highly rusted body; the edge's margins have four sides, a tapered shape with a jutting four-sided margin and a curved lower one (**Fig. 10/1**; 1.57 x 2.36 cm, height = 4.63 cm). The 8.84 cm long opposing arm was shaped like a chisel with an arched line, curved corners (blade length = 4.15 cm). The orifice with a 2.22 cm diameter was placed towards the edge and had inner walls covered with rotten brown-red wooden remains at the tail. The axe's width (3.23 cm) is at its maximum next to the orifice and has two rhombic small wings placed in a wide upwards angle / next to the left foot (height = 152.86 mm, edge's thickness = 14.49 x 23.60 mm, blade's width = 40.44 mm, coating's diameter = 24.53 mm, earlets = 32.11 mm, edge's length = 44.45 mm). The following inventory coming from this burial pit, already described and noted as such, were not identified within the collections of the National Museum of Union in Alba Iulia.
2. Ceramic vessel laid with its mouth upwards / to the occipital's right side.
3. Iron and bronze quiver fragments / above the shoulder. The quiver (65 x 78 cm) was laid on the right foot, from the third lower part of the cannon bone to the hip, inclined in relation to the skeleton's axe. The quiver's upper end was attached to a 3.5 cm wide bronze plate sheet. The quiver's body was made out of small wood boards (brown rot remains), that were plated with vertical rods with a wide and angular head. The quiver was filled with arrows and designed with a semi-circular iron top. The quiver's width towards the base measures 14 cm and towards the mouth, 12 cm.
4. Two bronze shackles, 6.5 cm apart from each other, were at to the right of the quiver's base.
5. A lyre-shaped buckle was 20 cm below the bronze plate (the quiver's mouth).

6. Two 13 Giesler type rings, one of them in a fragmentary condition / at the right ear.

M. 168. Depth = - 0.13-0.85 m, skeleton length = 1.72 m, orientation = WSW-ENE (**Fig. 11/a-d**). A burial pit covered with *tegulae* fragments and river and sandstone boulders layered or placed in consecutive layers. A thick layer made from limy sandstone (50) and river stone (30), shingle fragments laid on consecutive levels. The boulders' number is growing on the longitudinal and transversal sides, as well as in the eastern half of the burial pit along the long sides, convex onto the east and the shorter straight designed with rounded corners (2.54 x 1.43 m). At least two boulder layers thrown to the pit's mouth are distinguishable. A thick river boulder, limestone, and 3 *tegulae* fragments were identified in the eastern half of the pit after the removal of the level between - 0.18-0.47 m. A row of 10 boulders was placed on the edge of the northern side and two others were on the western one. Two other boulders were in the corner and the middle of the eastern side and a group of 4 boulders on the southern side and eastern half. Other boulders (5) and a *tegulae* fragment were dispersed in the western part of the pit. The 3rd layer was between 0.32-0.70 m and contained 25 pieces, a brick fragment broken in 3 pieces, 7 river boulders and 17 sandstone ones. Most of them (17) were in the eastern part of the pit, the central area, only one of them and the brick were at the opposing end. The pit is designed on layers of boulders placed on the margins: 3 on the eastern end (the central ones are overlapping each other), two in the SE corner. 5 distanced pieces were on the northern side; a boulder in the west end, the NW corner, and two overlapping themselves in the central part; another boulder was in the SW corner. An arrow head with a rhombic blade (- 0.54 m) and 2-3 ceramic fragments were found underneath the boulders on the northern side, in the filling earth. A male skeleton was laid on its back in the four-sided burial pit (2.50 x 1.06 x 1.10 x 1.40 m). The human remains were badly preserved and macerated. The whole skull with the jaw-bone was fallen to its left side. The cervical vertebrae had no joints and were pushed above the right shoulder and the thorax bones were *in situ*. The left ribs, the back and lumbar vertebrae, and the pelvis bones were decomposed. The arms were stretched along the body. The pit of a ritual fire-place was unearthed at 170 cm west from the southern burial pit's margin and was dug 40 cm deep. The multi-angular structure (114 x 129 cm) had its long axe on an NE-SW line and rounded corners. The soldering consisted of a crust made from brown-red earth, burned 1 cm thick, visible on the northern, north-western and southern sides. A coal streak was visible on the side, in the south-western and south-eastern corners, while burned wood remains (7 x 36 cm) were in the south-western part, inclined in the far end of the layer made of river boulders. A wash bowl-shaped pit was unearthed after removing the earth and the coal pieces. The former had inwards arched walls and a concave

base. The filling of the fireplace pit consisted in 44 limestone and sandstone boulders with an antique shingle portion and 2 vase fragments belonging to the Coțofeni culture. The coal layer was entering the pit's base; here and there it was also shaped as ash and lense stains (a-c). A 3 cm thick coal and ash layers was outlined on the fireplaces' base after removing the boulders. The western side and the line marking the northern and western margins were highly burnt and were brown and tile coloured. The concave pit's surface was ingrained with coal.

Funeral inventory:

1. A Säbelschwert was laid on the body's left side (from the humerus to the knee area). The iron made sword was in a wooden scabbard (**Fig. 11/1**). Except for the sword, the other weaponry pieces within the burial pit's inventory were not identified in the collection of the National Union Museum in Alba Iulia.
2. A ceramic vessel without decorations, laid on the left side of the calf, near the heel.
3. An iron piece used for hanging the weapon, placed in the middle of the scabbard.
4. Massive iron arrow covered with a thick rust layer, with a rhombic blade and upwards shoulders, middle rift and passing threshold with a broken thorn covered in rot remains (**Fig. 7**; h= 6.54 cm, blade's height = 5.33 cm, thorn's height = 1.21 cm, width = 1.96 cm, thickness = 0.40 cm) / in the filling earth beneath the river boulders layer on the northern side.
5. Iron knife/north from the upper third of the left thigh-bone.

M. 173. Depth = - 0.25-0.88 m, pit's length = 2.28 m, pit's width = 0.84 m, skeleton's length = 1.68 m, orientation = W (skull)-E (**Fig. 12/a-c**). The burial pit was shaped from compact river boulders layers, chalky sandstone and brick fragments (0.25 x 0.68 m depth). The pit's surface consisted of a compact boulders layer (0.86 x 2.38 m) placed between - 25-50 cm deep. A massive boulder was placed inclined (27 x 47 x 22 cm) on the eastern end. The western side was marked through 4 boulders: 2 were placed inclined but they fell outside the pit, one was placed on the side overlapping another massive triangular one. Three smaller boulders layers (middle-sized) were in the central pit's area, placed on two layers. 46 pieces were identified in the layer next to the pit's mouth: 12 river boulders, 5 brick fragments on the western side and 27 chalk sandstone boulders. After removing the first layer of boulders, the second level has been identified between - 46-68 cm. the middle-sized boulders were placed in the eastern part of the pit on a surface of 84 x 125 cm. 18 pieces had been identified: 5 middle-sized river buckets and 13 chalk boulders. A stone string was on the southern edge, another in the middle and a third boulders (3) string was on the northern margin. A four-sided pit with rounded corners was shaped after removing the boulders layer (- 0.74 m). The remains of an adult male

skeleton were identified in this pit. The remaining bones were well kept. The skull with the jaw bone was in an inclined position, falling to the right side. The thorax bones and the pelvis were intact. The arms were stretched along the body: the right palm under the hip bone. The legs were stretched with the left knee far to the north and the heels close to each other. The feet were in anatomic position and had fallen to the left with the heels facing the south.

Funeral inventory:

1. Iron knife with a highly corroded blade, broken in two pieces and widened towards the thorn. The edge was thickened, the blade curled and narrow towards the head, the vertical profile slightly curved and the short thorn's head was broken (**Fig. 12/1**; h = 8.50 cm, l = 1.08 cm, gr. = 0.29 cm) / outside of the left thigh-bone.

2. Highly corroded iron snaffle-bit with a nozzle consisting in two arms, with four sides and flat ends coupled in the middle by connecting the loop of an extremity with the loop of the neighboring bar. The opposing end of each arm is arching like a circular loop through which a thick cylindrical bar ring is passing 0.93 cm și 0.78 cm, having closed end (**Fig. 12/2**; height = 16 cm, circle's diameter = 6.43 x 6.32 cm, rods' height = 8.65 x 9.94 cm, thickness = 0.95 cm) / laid in a right angle on the left feet.

A bundle of arrows with their head upwards (**Fig. 12/3-4; 14/38, 15/42, 47-49**) / to the left side of the body, above the left shoulder.

3. Highly corroded arrow with broken rhombic blade and shoulders going to the upper end, with a cone-shaped threshold towards the horn, designed with a middle vertical rift and rotten wooden remains (**Fig. 12/3**; height = 7.8 cm, blade's height = 4.95 cm, thorn's height = 2.85 cm, l = 2.60 cm, gr. = 0.35 cm).

4. Corroded oval-shaped long arrow (willow leaf) with symmetric edges narrow towards the head, a barely visible threshold, short thorn (1.03 cm), broken head, vertical middle rift (**Fig. 12/4**; h = 7.92 cm, blade's height = 6.89 cm, thorn's height = 1.03 cm, gr. = 0.48 cm).

Wooden and iron remains from a quiver were found on the left forearm (**Fig. 12/5-7; 13/20-25; 14/27-34; 15/41, 43-46; 16/50-63**; height = 74 cm).

5. Short nail with triangular flower and a body covered with rotten wooden remains (**Fig. 12/5**; height = 1.26 cm).

6. Short nail with oval flower and a body covered with brown rotten wood (**Fig. 12/6**; height = 2.01 cm).

7. A nail with a four-sided slower and a bent body, with an oval cross-section, covered in rotten brown wood (**Fig. 12/7**; height = 1.21 cm)/above the head of the left humerus.

8. A bone plate fragment a with a vertical straight profile, a curved concave-convex cross-section brown-yellow on the outside and spongy on the inside (**Fig. 13/8**; height = 4.7 cm, width = 1.25 cm, thickness = 0.18 cm).

9. A narrow splinter detached from an arch plate with a slightly arched profile, an even cross-section, with parallel outer chamfers and spongy inner structure (**Fig. 13/9**; height = 7 cm, width = 0.70 cm, thickness = 0.13 cm).
10. Narrow splinter detached vertically from a bone plate, broken in two pieces, brown-yellow, with a vertical arched profile and a straight cross-section (**Fig. 13/10**; height = 6.40 cm, width = 0.95 cm, thickness = 0.18 cm).
11. A fragment from a bone plate with an external narrow end (1.30 cm) and a wide middle part (1.67 cm), a thick longitudinal edge (0.07 cm) with inclined parallel incisions and the other edge was thinned and designed with a 3-shaped corbel, a slightly curved profile, convex-concave cross-section with rust remains on the edges corner and inclined parallel cuts displayed on $\frac{1}{4}$ of the opposing end (**Fig. 13/11**; height = 8 cm, width = 1.30-1.67 cm, thickness = 0.07 cm).
12. Fragment from a bone plate, wide at one end (1.67 cm) and narrow at the other (1.30 cm), it has a curved cross-section disposed with hatched and inclined cuts on the outer wide end's edge / two pieces (**Fig. 13/12**; height = 8.20 cm, width = 1.40 cm, thickness = 0.16 cm).
13. An arch plate with a slightly curved profile and concave-convex cross-section with broken ends and a thick edge designed with parallel chamfers, a convex surface and $\frac{1}{4}$ of the end designed with inclined cuts and long curled margins (**Fig. 13/13**; height = 11.10 cm, width = 1.78 cm, thickness = 0.25 cm).
14. Bone arch plate, brown-yellow, curved, convex on the outside and concave on the inside with a curved concave-convex section designed with parallel inner inclined chamfers with curved vertical profile and broken end / two pieces (**Fig. 13/14**; height = 17.80 cm, width = 2 cm, thickness = 0.21 cm).
15. Highly corroded iron lighter made from a bar widened in the middle, with a rounded head, curled arms towards the inside and symmetric on the outside with textile remains on the arm's surface and on the extremities, and with a wide half plate (**Fig. 13/15**; height = 6.16 cm, width = 3.14 cm, thickness = 0.68 cm) / under the right palm.
16. Narrow fragment from a bone plate with inclined parallel chamfers (**Fig. 13/16**; height = 3.80 cm, width = 0.6 cm, thickness = 0.27 cm).
17. A splinter broken from an arrow plate with slightly curved vertical profile and an arched cross-section with uneven contour and parallel inner shafts (**Fig. 13/17**; height = 1.86 cm, width = 0.85 cm, thickness = 0.40 cm).
18. A fragment from a curved bone plate with vertical profile and cross-section, a thick edge with inclined parallel shafts; inclined cuts are visible on the outer surface; these were placed in two different registers (**Fig. 13/18**; height = 5.20 cm, width = 2.64 cm, thickness = 0.30 cm).
19. A splinter from a bone plate with a wide central part, with thinning extremities, a concave-convex cross-section and a slightly curved vertical profile (**Fig. 13/19**; height = 4.57 cm, width = 1.39 cm, thickness = 0.24 cm).

19. Highly corroded fragments from the metallic carcass of the quiver. Brown-yellow rot remains were abundant on the contact surface between the metallic plates and the wood.

20. A bar with wide rhombic head disposed of with a nail and flat-convex tail (3 pieces; **Fig. 13/20**).

21. A bar with rhombic head and a short nail with multi-angular flower broken in two pieces. The rod had a flat-convex section (**Fig. 13/21**).

22. A bar with a rhombic blade, an outer bent head, designed with a short (broken) nail. The bar is broken into 5 pieces and has a plan-convex section (**Fig. 13/22**).

23. A bar with rhombic blade and 4 pieces from a broken nail (**Fig. 13/23**; 1.28 x 1.40 cm).

24. A five-piece fragment of various sizes (1.35 x 2.94 cm) of constant width (1.18 cm) and a thickness of 0.17 cm; some of these were arched convex-concave. Short nail remains were fixing the blade from the quiver's body (**Fig. 13/24**).

25. Four-sided iron plate (**Fig. 13/25**; height = 8.27 cm, width = 4.14 cm), with a thickness of 0.20 cm, with two broken semi-cylindrical arched corners. A nail head holding the plate with the other wooden quiver's body parts was kept in a corner. A brown rot layer was on the inside and exfoliated rust remains on the outside.

26. Highly corroded riding ladder with a wide sole (3.18 cm), rounded edges. It was designed with three embossed parallel rifts on the lower surface / two side ones and a middle one. The sole becomes narrower at the end in a symmetric way in the shape of thick bars designed with four flat sides slightly widened in the shoulder area and in where it is attached to the ear's neck. This sole has a multi-angular contour and flat edges; it has an uneven oval-prolonged eye 0.02 x 1.70 cm). Sizes: height = 17.69 cm, width = 12.50 cm, ear's width = 0.39 cm, ear's thickness = 0.45 cm, sole's width = 3.18 cm, sole's thickness = 0.59 cm; **Fig. 14/26** / on the left knee.

27-28. A bar used to flatten the quiver with a rhombic head, lowered shoulders, a broken lower end, highly corroded with a flat inner side and a semi-cylindrical outer one keeping a nail in the middle part / rivet with a broken head (**Fig. 14/27-28**; height = 7.80 cm, width = 0.42-1.35 cm, thickness = 0.24 cm).

29. Fragment from the blade of a two-piece circle with flat-convex cross-section, inner arched edges. The blade was inwards curved and covered with a rotten brown layer and pierced by a short nail (**Fig. 14/29**; height = 7 cm, width = 0.97 cm, thickness = 0.08 cm).

30. A blade fragment from an iron circle, highly corroded on the outside, covered with a brown rotten wood layer on the inside and a inwards curved

vertical profile, a flat-convex cross-section and one narrower end (**Fig. 14/30**; height = 3.21 cm, width = 1.12 cm, thickness = 0.24 cm).

31. A fragment from an iron circle's blade, highly tainted on the external surface and covered in brown rotten wooden remains on the inside, with a convex-concave cross-section and arched vertical profile (**Fig. 14/31**; height = 3.22 cm, width = 1.39-2.79 cm, thickness = 0.29 cm).

32. Short iron nail with multi-angular flower and a four-sided body, a sharp head. The nail was covered in brown rotten wooden remains (**Fig. 14/32**; height = 2.15 cm).

33. Foil fragment from a circle. The fragment had a rectangular contour and a four-sided cross-section (**Fig. 14/33**; height = 1.35 cm, width = 0.9 cm, thickness = 1.3 mm).

34. Short nail with a broken flower, covered with rotten wooden remains (**Fig. 14/34**; h = 10.5 mm).

35. Bronze shackle of fix size, a flat base, rounded edges, with the opposite side more narrow and the inside one flat (**Fig. 14/35**; diameter = 2.80 cm, thickness = 0.37 cm, bar's width = 0.43 cm) / on the ribs, south from the left elbow.

36. Iron piece (shackle/belt buckle?), four fragments with an oval cross-section/on the left side (**Fig. 14/36**; diameter = 3.3 x 4.5 cm).

37. A trilobed bronze buckle, consisting in an oval frame (1.66 x 2.30 cm) made from a wide bar (0.3 cm), with a thickness of 0.17 cm. The buckle's tongue had a common body with an elliptical frame and a "window" in its upper part. The lower iron thorn end (2.34 cm) went through this "window". The throne had a broken head and was bent over the dividing bar. The trilobed tongue had symmetric side lobes designed with a bar and a flat circle on each side. The highly corroded thorn had an enhanced volume (0.82 cm). The lower part had a shaft with curved convex oval sidelines (h = 3.64 cm, llimbă = 2.26 cm). The tongue's edges were curved inwards. It was fixed on the belt through two bronze rivets aligned on the central lobes' part (**Fig. 14/37**; height = 3.64 cm, tongue's width = 2.26 cm).

38. An arrowhead with rhombic blade's edges, curled as a result of corrosion, with lower shoulders towards the inner end, the thorn had a short, cone-shaped threshold with rotten wood remains (**Fig. 14/38**; height = 9.29 cm, width = 2.30 cm, thickness = 0.24 cm, thorn's height = 2.67 cm, blade's height = 6.62 cm).

39. Highly corroded iron ladder with an arched and slightly outer curved sole, identical with the previous one (**Fig. 15/39**; height = 17.98 cm, width = 12.75 cm, ear's width = 4.14 cm, ear's thickness = 0.57 cm, eye's diameter = 0.74 x 1.70 cm, sole's width = 3.24 cm, sole's thickness = 0.5 cm).

40. Trapeze-shaped iron buckle, highly corroded, with rounded corners, the frame has four sides. The side supporting the thorn's head is wider and the other narrower. The thorn has a broken head and the inside end was wide and wrapped

around the inner frame's bar (**Fig. 15/40**; height = 5.86 cm, sides' width = 4.13 x 4.74 cm, thorn's height = 2.89 cm, width = 0.65 cm, shackle's diameter = 0.77 x 0.90 cm) / on the inside of the left thigh-bone.

41. The quiver's upper walls are kept as iron corroded bars placed on both sides of the left elbow; the reinforcing quiver's bar, flat on the inside and shaped as a half-sphere on the outside, highly corroded, ending in an rhombic bladed arrowhead (**Fig. 15/41**; height = 9.82 cm, width = 0.46 cm, thickness = 0.3 cm, rhombic blade's width = 1.33 cm).

42. Arrowhead with a highly corroded rhombic blade with upwards elevated shoulders and a vertical middle rift placed on the threshold towards the thicker short thorn (height = 2.35 cm, thickness = 0.30 cm); its head was short and cone-shaped (**Fig. 15/42**; height = 7.64 cm, width = 1.85 cm, blade's height = 5.29 cm, thickness = 0.3 cm).

43. A fragment from a circle blade; the latter had a slightly arched vertical profile with rust covered edges, with an inner brown-yellow rotten wood layer and was designed with a rivet/sphere-shaped nail at one end, while another nail was visible in the blade's middle part. The outside surface was enforced with 5 fine bronze plates placed in a right angle at equal distance from another. The plates have curved edges over the middle blade, as it is visible from their cross-section (**Fig. 15/43**; height = 3.4 cm, width = 1.75 cm, thickness = 0.29 cm).

44. Fragment from a circle that was used to cover the wooden quiver's body and was fixed with a short iron nail (**Fig. 15/44**; height = 1.25 cm, width = 0.93 cm, thickness = 0.32 cm).

45, 59. Fragmentary iron plates (**Fig. 15/45; 16/59**; height = 1.53-1.59 cm, width = 1.02 cm, thickness = 0.16 cm).

46. A circle fragment from a quiver. The fragment was slightly arched, covered on the inside with brown-yellow wooden remains and with a rot layer on the outside. It also showed a bent edge on the outside, forming a right angle (**Fig. 15/46**; height = 3.60 cm, width = 1 cm, thickness = 0.12 cm).

47. Arrowhead with blade shoulders drawn to the upper end and a middle vertical rift. The blade is long, measuring 5.70 cm; the thorn is short, cone-shaped, with a pointy head, designed with a threshold and shows brown-yellow rotten wood remains on the rod (**Fig. 15/47**; height = 7.92 cm, width = 2.13 cm, thickness = 0.38 cm, thorn's height = 2.22 cm).

48. Arrowhead with a broken head, middle rift, rhombic-shaped cross-section, upwards lifted shoulders, a short thorn (1.28 cm) with a broken head and short cylindrical (**Fig. 15/48**; height = 7.23 cm, width = 1.96 cm, thickness = 0.3 cm, blade's height = 5.97 cm, thorn's height = 1.26 cm).

49. Arrowhead with shoulders lifted towards the end, with a middle rift, a threshold and short broken thorn (**Fig. 15/49**; height = 6.70 cm, width = 2.10 cm,

thickness = 0.8 cm, blade's height = 5.18 cm) / the body's left side, above the left shoulder.

50. Iron nail with rhombic flower, highly corroded with brown-yellow rotten wood remains on the body (**Fig. 16/50**; height = 2.58 cm).

51. Short curved rivet with a trapeze-shaped flower with brown rotten wood remains (**Fig. 16/51**).

52. Short iron rivet with triangle-shaped ends and a body covered with rotten wood remains (**Fig. 16/52**; height = 1.2 mm).

53. Three wide blade fragments from a circle, highly corroded, designed with a rivet/inclined nail (**Fig. 16/53**; height = 6.83 cm, width = 1.32 cm, thickness = 0.42 cm).

54. Nail with an oval curved flower (**Fig. 16/54**; height = 1.02 cm).

55. A nail with a massive flower (**Fig. 16/55**; height = 1.12 cm).

56. A nail with an oval flower and circular profile (**Fig. 16/56**; height = 1 cm).

57-58. Nails/short rivets with oval-circular flower and round profile (**Fig. 16/57-58**; height = 0.92 cm).

60. An arched bar with fine ends (**Fig. 16/60**; h = 3.20 cm).

62. A fragment from a rhombic rod's blade with a fine head that was bent to the edge (**Fig. 16/62**; height = 2.63 cm).

63. A rivet nail with six-angled flower (**Fig. 16/63**; height = 1.05 cm).

M. 177/S. IV. Depth = 1.01-1.05 m, pit's length = 2.30 m, pit's width = 0.75-0.90 m, skeleton's length = 1.70 m, orientation = W (skull)-E (**Fig. 17/a-b**). Burial pit with trapeze-shaped contour and rounded ENE corners, laid out with river boulders and limestone. 5 big boulders (3 river ones and 2 limestone ones) were found on the WSW pit's end at a depth of - 0.59-0.76 m. The sixth boulder of limestone was on the southern edge, in the SE corner. An antique shingle was in the middle of the northern pit's part. The pit was also designed with a big triangle shaped boulder was inclined in the SW corner (to the right of the skull). Other 6 boulders, one of them a river boulder, were placed at different depths on the western margin; a fragment from a Hallstatt ceramics was next to these. A limestone boulder was inclined on the NW corner. A limestone boulder was inclined, placed in the middle of the south side and two other boulders on the northern one, placed inclined and fallen inwards on their wide surface. Another cone-shaped limestone boulder (2nd layer) was in the eastern corner. A robust male skeleton was found placed on its back in a relatively good shape. The skull was complete and the articulated jawbone was facing upwards. The thorax's bones were *in situ*. The arms were stretched, bent from the elbows and laid on the pelvis (the left one) and along the body. The right cubitus bones were on the coxal bones and the palms' bones were scattered to the right of the pelvis. The left radius was macerated in its lower half and the palms' bones were on the

coxal and thigh-bone. The legs are stretched with the heels slightly apart from each other; the feet are fallen in opposite directions.

The kneecaps were *in situ*. Egg remains were recovered from the burial pit. These egg remains were laid as an offering; their position inside the burial pit was unprecise.

Funeral inventory:

1. A fragment from a bone plate, brown-yellow with a slightly outer curved profile and a curved cross-section (**Fig. 17/1**; height = 6.60 cm, width = 1.9 cm, thickness = 0.20 cm).
2. A fragment from a brown-yellow bone plate with a slightly outer curved profile and a curved concave-convex cross-section (**Fig. 17/2**; height = 3.8 cm, width = 1.14 cm, thickness = 0.14 cm).
- 3-4, 6-7, 9-10. A bundle consisting in 6 rhombic arrowheads of different types; most of them were laid on the lower third of the left forearm and one of them between the sacrum and the ilium bone (**Fig. 17/3-4, 6-7, 9-10**).
3. Corroded arrow with rhombic blade and lifted shoulders with vertical middle rift, threshold towards the cone-shaped thorn, curled, with a sharp head (**Fig. 17/3**; height = 7.30 cm, height at the shoulders = 4.70 cm, thorn's height = 2.60 cm, width = 2.18 cm, blade's thickness = 0.32 cm).
4. An arrow with a rhombic blade, lifted shoulders, designed with a vertical middle rift, a threshold towards the cone-shaped thorn, covered with rotten wood remains (**Fig. 17/4**; height = 9.40 cm, blade's height = 5.72 cm, thorn's height = 3.68 cm, width = 2.74 cm, thickness = 0.27 cm).
5. A fragment from a bone plate with slightly outer curved vertical profile and a concave-convex section; the outer surface is polished (**Fig. 17/5**; height = 3.57 cm, width = 1.26 cm, thickness = 0.04 cm).
6. A highly corroded iron arrow with a rhombic blade and lifted shoulders, with a vertical middle rift, threshold towards the short thorn (1.34 cm); the head was broken (**Fig. 17/6**; height = 6.8 cm, blade's height = 4.83 cm, blade's width = 1.83 cm, thickness = 0.28 cm).
7. An arrow with rhombic blade and asymmetric edges, with lifted shoulders and rounded corners, with middle vertical rift, threshold towards the four-sided thorn and a head covered in brown rotten wooden remains (**Fig. 17/7**; height = 7.90 cm, blade's height = 4.60 cm, thorn's height = 3.30 cm, width = 2.07 cm, thickness = 0.23 cm).
8. A yellow bone plate used to enforce the arch, with a longitudinal section; the vertical profile was curved towards the outside, it has a thick edge (0.22 cm), with an opposing concave thinning side, with an oval-shaped corbel with a middle

cut (**Fig. 17/8**; height = 13.38 cm, thickness = 0.22 cm)/on the thorax, on both sides of the backbone.

9. Corroded arrow with a rhombic blade, lifted shoulders, a middle rift, threshold and sharp cone-shaped thorn with a bent head, and brown rotten remains (**Fig. 17/9**; height = 7.90 cm, blade's height = 5.35 cm, thorn's height = 2.76 cm, width = 2.20 cm, thickness = 0.4 cm).

10. Corroded arrow with rhombic blade with lifted shoulders oriented towards the broken head, a longitudinal middle rift, threshold, four-sided thorns, curved, with a sharp head (**Fig. 17/10**; height = 7.46-7.95 cm, blade's height = 4.27 cm, thorn's height = 3.17 cm, width = 2.28 cm, thorn's diameter = 0.5 cm).

11. Fragmentary lighter/on the humerus' head (**Fig. 17/11**).

12. Iron bar fragment, longitudinally rifted (**Fig. 17/12**; height = 1.87 cm).

13. Fragmentary ring, of which 1/3 of a shackle has been recovered, namely the slightly thinned extremity, made from a bronze wire (**Fig. 17/13**; height = 1.38 cm, thickness = 0.18 cm).

14. Simple bronze iron ring with parted ends that are pushed sideways (**Fig. 17/14**; height = 2.32 x 2.33 cm, thickness = 0.17 cm) / at the left year.

15. A massive boar fang from with a crank along the longitudinal ax, thickened at the base and thinned towards the head (**Fig. 18/15**; height = 15 cm, width = 2.89 cm, thickness = 2.14 cm).

16. Thin knife blade with a maximum width in the threshold area towards the thorn (0.98 cm), and a length of 5.50 cm. The thorn has four sides and is thin and narrow (4.24 cm), its blade is concave and had a convex thickened edge (0.37 cm) that is narrower towards the head (**Fig. 18/16**; height = 9.74 cm, width = 0.98 cm, thickness = 0.37 cm) / between the heels.

17. An arrowhead made of a four-sided bar thick in the middle and thin at the ends with one of the latter made of rotten wood (**Fig. 18/17**; height = 7.84 cm, width = 0.62 cm, thickness = 0.37 cm).

M. 184/S. VI. Depth = - 0.45-0.65 m, pit's length = 2.56 m, pit's width = 0.98 x 1.03 m, orientation = W-E (**Fig. 19/a-b**). It was located on the S.VI middle northern side. The northern threshold was dug in order to reveal the grave. The Roman irrigation ditch was found under the NE corner and went on towards S.VII. The burial pit was designed with antique *tegulae* and limestone and river boulders. The first layer consisted in 40 small, middle-sized and massive limestone and river boulders (a cinder block, a crack from the base of a column, 3 raw made boulders, a massive sphere-shaped boulder, 5 river boulders). Most of the pieces were made of white-yellow limestone. The massive parallelepiped cinder block (35 x 46 x 64 cm) was designed with a "swallow tail" carving on one side (13 x 13 x 6 cm) and chisel raw dug sides. The parallelepiped cinder block was roughly made. The massive white-yellow limestone boulder (36 x 44 x 40 cm) had cracked sides in various angles; it came

off a large block. The massive trapeze-shaped block (23 x 63 x 74 cm) had numerous side breakages and bluntly finished surfaces. The parallelepiped limestone boulder (11 x 43 x 55 cm) with the wide surfaces incompletely shaped. A boulder exfoliated in its lower part of a white-yellow limestone foot (22 x 53 x 76 cm) with a finished body designed with a circular incision towards the base, 26 cm from it. Uneven cracks in the columns' body visible on the side surface and the base's edge. The second layer contains 14 pieces: 3 *tegulae* fragments and 11 limestone boulders. There were a total of 42 lithic pieces and 12 *tegulae* inside the burial pit. The deranged slightly trapeze-shaped burial pit with slightly rounded corners harbored a disheveled adult male skeleton with scattered bones. The chin and other fragments (NW corner), a rotten hip bone (SW corner), the left collarbone, the jawbone with the teeth, the ulna and radius bones of one of the forearms were found in the western end. The left arm was stretched along the body including the ulna and radius bones (N). The right collarbone, vertebrae, the skull and an inclined humerus bone were found in the central area, in the pit's eastern third. The left thigh-bone with inversed ends and the left cannon bone were parallel with the right cannon bone. The latter was overlapped by fragmentary parts of the skull to the north, a part of the jawbone including teeth and 3-4 metatarsal and heel bones. A coal layer was identified after cleaning the burial pit. This layer was wider (48 cm) to the west, under the head, and in the legs area (50-57 cm) along a length of 180 cm. The heels' bones, the metatarsals, and the phalanges were found scattered near the feet. The thigh-bones were unjointed and overturned on the calves' *fibulae*. These had remained parallel when lifting the bones.

Funeral inventory:

1. A longitudinal exfoliated fragment plating the bow. The piece had a flat and fine inner concave and outer convex surface. The convex edge has a curled line formed through corrosion and broken contour portions. Corrosion remains are visible at the narrower end, while the opposite one kept a marginal socket used for fixing the plate (**Fig. 19/1**; height = 23.60 cm, width = 1.85 cm, thickness = 0.32 cm) /at the legs, in the eastern end of the burial pit, in an inclined position.
2. Rhombic arrowhead with a middle rift, without a stern/thorn (**Fig. 19/2**; height = 6.28 cm, width = 2.64 cm, thickness = 0.21 cm) / in the NW corner.
3. Another iron thorn fragment coming from an arrow was found in the pit's opposite end (height = 1.28 cm).

M. 208. Depth = 0.29-1.08 m, pit's length = 2.22 m, pit's width = 0.80-0.86 m, skeleton's length = 1.70 m, orientation = WNW-ESE (**Fig. 20/a-d**). The burial trapeze-shaped pit had rounded corners, designed with *tegulae* and river boulders, with limestone and sandstone. A trapeze-shaped pit was set up on a four-sided surface (75 x 80 x 223 cm). Four limestone boulders were placed inclined on the ESE side while on the NE corner one was inwards inclined. Five

boulders were placed inclined on the WNW side forming two layers, while the SW boulders were on its flat side. An initially vertical placed block array had fallen in an inclined position (5-6) and another one on the southern side. A big oval-shaped flatten limestone boulder (30 x 40 x 21 cm) was on the WNW side. The central part of the pit was occupied by a boulder array that filled up the empty space. The extremities contained another overlapped boulders' array disposed on two levels of which the lower one maintained itself as such in the central part as well. The level towards the pit's base became visible after removing the first boulders' layer between – 0.66-0.94 m. 4-5 sandstone boulders were also identified in the ESE pit's end overlapping the lower level. Two boulders in the NW corner were placed over three big pieced in the base's level. An array of 7 stones on the southern side was placed on the ground and another one on the northern side (6-7 boulders) placed on one side. 28 pieces have been identified: a small *tegula* fragment in the ESE end, 2 large river boulders and 25 large limestone boulders and blocks. The central side of the northern part was occupied by a Roman monument with its framework oriented upwards. Ceramic prehistoric fragments, 75 boulders, and 3 *tegulae* fragments were found in the filling earth. After removing the last boulders layers, an adult male, robust skeleton was identified, placed on its back with the head towards WNW. The bone remains were well preserved. The broken skull was fallen to the side, while the jawbone was articulated. The thorax's bones were found *in situ*. The sternum was fallen on the backbone. The coxal bones were also *in situ*. The arms had the forearms bent from the elbow and were placed on the left coxal bones. The right palm was over the distal extremity of the cubitus and radius bones. The lower members were stretched and the knees were close to each other and the cannon bones were in a parallel position. The cannon bones were followed by the feet bones placed in anatomical connection. On the southern margin, a continuous 3-5 cm wide coal streak became visible starting near the right humerus. The streak's lower end is close to the right feet's metatarsal bones. Four limestone boulders and a brick fragment were above the feet. Several prehistoric ceramic fragments came from the filling earth.

Funeral inventory:

1-4, 7-10. Bone plates from a white-yellow bow in a fragmentary state, consisting in different sized pieces (**Fig. 20/1-2; 21/3-4, 7-10**).

Two-piece plate (16.70 cm) and a third lost one with a width of 24 cm and a thickness of 2.1 mm with an outer convex side and an inner concave one designed with parallel streaks. One of the edges showed a side corbel with a flat edge.

A fragment from a wide plate (2.87 x 9.76 cm) and other four smaller remains with and puter convex surface and an inner concave one designed with fine superficial streaks.

Fragment from another white-yellow plate's extremity with inclined flattened margins. The plate fragment was broken with an inclined section at the opposing end. The outer side was finished and flat, while the inner one was concave designed with uneven streaks (height = 5.6 cm, width = 1.5 cm, thickness = 0.57 cm) / on the pit's ESE side, above the legs.

5. A bone fragment that was used as a plate to the bow representing one end of the piece, having a outer finished side and an opposing flat one with a slight unevenness and fillets visible towards the breakage point (**Fig. 21/5**; height = 4.78 cm, width = 1.59 cm, thickness = 0.68 cm).

6. Atypic diaphysis fragment originating from an ovine's bone wall that was convex on the outside and concave on the inside (**Fig. 21/6**; height = 2.64 cm, width = 0.84 cm, thickness = 0.29 cm).

11. Arrowhead with a highly corroded rhombic blade with brown rot remains on the long thorn (2.47 cm); the point towards the blade is designed with a middle longitudinal rift marked through a ring that is sticking out (**Fig. 21/11**; h = 7.15 cm, l = 2.05 cm).

12. A highly corroded arrowhead with a broken thorn, a rhombic blade with a slightly visible middle rift; the threshold towards the thorn was through the arched shoulders (obtuse angled) (**Fig. 21/12**; height = 6.20 cm, width = 2.50 cm) / next to the curving of the left feet.

M. 210/S. IV. Depth = - 0.58-1.11 m, pit's length = 2.45 m, pit's depth = 0.93-1.04 m, skeleton's length = 1.66 m, orientation = WSW (skull) - ENE (**Fig. 22**). A trapeze-shaped pit with straight eastern corners and rounded western ones. An adult male skeleton placed on the back with the thorax and arms' bones mostly macerated. The skull was crushed and placed on the side facing southwards and the jaw-bone was *in situ*. The thorax's bones were destroyed and the backbone was slightly curled keeping the cervical vertebrae and the back lumbar ones. The arms are stretched along the body with their forearms slightly bent from the elbow and the palms placed on the pelvis. The long bones were destroyed with the exception of a splinter from the diaphyses and the right palm's bones. The coxal bones were also destroyed but the pubic bones were *in situ*. The lower members were stretched with knees close to each other and jointed heels. The feet bones were fallen to the inside. Some segments (a metatarsal and a disjunct heel bone segment) were visible at the tip of the missing phalanges of the right foot. The kneecaps were *in situ*. The burial pit was designed with river boulders and *tegulae* fragments. Two of them are protecting the right shoulder and hip on the southern area in an inclined position. An array of 6 big boulders were placed inclined or on the northern edge starting from the shoulder to the upper third of the left cannon bone. A brick fragment was in the north-western corner, a *tegulae* triangular fragment was on the left hip and a small river boulder was on the midriff. The upper third and half of the

right and left cannon bones were broken and placed on the side (ritual?). Prehistoric ceramic fragments were found in the filling earth.

Funeral inventory:

1. Knife blade with broken end, a damaged thorn close to the widening spot of the blade, with narrowing and broken head, a thick straight edge and slightly concave blade that was thinning (**Fig. 22/1**; the blade = 0.42 cm, blade' width = 1.38 cm, height = 14.90 cm) / parallel in relation to the the lower third of the left humerus, on the inside.
2. Iron shackle of fix size in a fragmentary state (3 pieces), highly corroded (**Fig. 22/2**; d = 2.98 cm, l = 0.53 cm)/on the right side of the knee.
3. White-yellow bone splinter with tissue remains on the inside (**Fig. 22/3**; height = 3.26 cm, width = 0.85 cm, thickness = 0.23 cm).
4. Iron arrowhead with the thorn's iron end slightly bent, with a curved body and fragmentary head (**Fig. 22/4**; thorn's height = 1.3 cm, height = 5.45 cm, width = 1.41 cm, thickness = 0.23 cm) / next to the right hip.
5. A fragment from an iron rhombic blade with a middle bilateral rift; the rod's length was of 3.7 cm and the head was fragmentary with brown rotten wood remains (**Fig. 22/5**; height = 5.30 cm, width = 2.18 cm) / next to the skull's occipital, in the north-western corner.
- 6-8. Bone plates from a bow / 3 fragments:
 6. A fragmentary extremity from a white-yellow bone plate with an alveole-shaped surface (2 fragments), thinned towards the extremity, with rounded corners, a fine outer surface, while the inner one was designed with parallel ditches along the longitudinal axe (**Fig. 22/6**; height = 10.40 cm, width = 1.75 cm, thickness = 0.30 cm).
 7. Plate fragment with a sharp end and another wide one. The fragment was fine on the outside and with parallel ditches on the inside. The vertical profile was slightly arched (**Fig. 22/7**; height = 9.54 cm, width = 1.61 cm, thickness = 0.28 cm).
 8. Concave edge from a bow plate with a longitudinal arched white-yellow bone profile that was fine on the outside and was designed with parallel ditches on the inside (**Fig. 22/8**; height = 8.08 cm, width = 1.33 cm, thickness = 1.50 cm) / over the feet.



Most of the *sepulcher pits* were arranged with lithic material (M. 115, M. 133, M. 143, M. 168, M. 173, M. 177, M. 184, M. 208, M. 210), a custom that is frequently encountered in the 10th-11th century graves from Alba Iulia. In this sense, there can be exemplified also some warrior gravied from *Stația de Salvare* necropolis, arranged after this ritual (M. 304, M. 664 and M. 691).

Remains of charcoal are in M. 115, M. 184 and in the filling pit above the basin M. 165. This custom, connected probably with the purification of the deceased it is being encountered at the 10th century time horizon also in other cemeteries from Alba Iulia (*Stația de Salvare, Str. Brîndușei, Pâclișa*).

The horse offering. M. 165 had a stand with the length of 75-82 cm situated at the Western-South-Western part of the pit in which were displayed four cut members of horse, three of them overlapped in the South-Western corner and another oblique at its Eastern side. In the North-Western corner at - 0.25 m it was displayed the horse's head and an articulated cervical vertebra. It is being placed with the skull cap facing up, the mouth towards West, slightly bended towards right with the maxillary removed in the dentition area. After rising the horse bones (legs, skull) it was unveiled the calf and the skull. The deposition of the horse skull backwards, could represent „an annulment of the pagan ritual“.

The egg offering. In M. 165 remains of two eggs were identified, both displayed near a pot. Other remains are signalized in M. 177 but, without any specification of the anatomical position of deposit. With only one exception, this custom is being frequent in the funerary discoveries from Alba Iulia - *Stația de Salvare, Brîndușei Street*, only in the 10th century. Compared with other necropolises from the European space, where the percentage of this deposits is higher in children graves, at *Izvorul Împăratului*, the situation is opposite, due to the reactivation of Christianity. From the 27 graves with remains of egg offerings from *Izvorul Împăratului*, a higher percentage was noticed at adults (70%) and lower at children (19%). The percental values in the case of the two adults was 37% at men, 33% at women and 11% uncertain in what concerns the sex. The presence of egg offerings at a time horizon of the middle of the 11th century was noticed in the cemetery of Alba Iulia - *Str. Vinătorilor*, where M. 189 (a girl) had deposited remains in the area of the right forearm.

The earliest presence of this custom at Alba Iulia is being represented by M. 624 (child) from *Stația de Salvare*, which had displayed near the legs a lamb skull with the calotte facing up and remains of the member bones. The funerary inventory was composed of two pots (a small amphora with Greek inscription and a pot), a bell and a knife belt. In the space between the two ceramic pots it was identified remains of 1-2 eggs, and other on the bottom of the small amphora. Until this moment it is the only grave with two pots from the necropolis, in which remains of egg appear. Some elements, determine us to place it in the chronological space of interference between the two funerary horizons or more precisely at the beginning of the 10th century. From another perspective, it shouldn't be omitted the fact that, a number of seven graves from phase II from *Stația de Salvare* have in their funerary inventory two ceramic pots.

The funerary inventory identified in the warrior graves it is being composed of harness pieces, weapons and pottery. The weapon pieces and accessories are being represented by arrow points (M. 115, M. 133, M. 144, M. 173, M. 177, M. 184, M. 208, M. 210), remains/arc plates made of bone (M. 115, M. 173, M. 177, M. 184, M. 208, M. 210), Kecel belt (M. 115) and belt distributors (M. 115).

Bone plates. The anatomical position of displaying the arc plates made of bone is different: over the feet paws (M. 210), over the feet (M. 208), at the feet (M. 184), on the thorax, on one and other side of the spine (M. 177), the area of the left femur and left of the skull (M. 173) and in the area of the right forearm (M. 115). The bone plates (Tomičić A 1) from the arc have analogies with the Hungarian discoveries from Sárkadkeresztúr - *Barna tanya*/M. 12², M. 81³, Magyarhomorog - *Könyadomb*/M.23⁴, Pilin - *Leshegy*/M. 1⁵, Bánov/M. 16⁶, Letkés - *Téglaégető I*/M. 59⁷, Nădlac - *Lutărie*/M. 01, M. 13⁸, Novi Bečej - *Matejski brod*⁹, Vukovar - *Lijeva bara*/M. 92¹⁰ and Voiteni/M. 3¹¹.

The existing examples from the Alba Iulia - *Izvorul Împăratului* graves can be framed in type 1 Demo (named after the exemplary from Sárkadkeresztúr - *Barna tanya*/M. 81¹²), one quite spread in the Hungarian discoveries from the 10th-11th centuries¹³. In this context, it is worth mentioning the fact that, in the warrior graves from Alba Iulia - *Stația de Salvare*, identified/researched between 1979-1981, the plates of bone with talked the arc are missing.

The arrows from M. 177 were displayed in bunch/tuft on the left forearm, with the points facing the superior part of the body. On the left side of the abdomen there was also the plate made of bone from the arc, having a carving for fixing the chord. In bunch were also displayed the arrows from M. 173 (at the left shoulder) and M. 144 (in the superior third of the left femur).

In the case of the arrows there can be added also some examples, that were in secondary position in the filling soil of other features:

1. Iron arrow point with rhombic blade, the shoulders erected towards the point, longitudinal median rib, passage to the conic spine, with a thin and elongated

² Medgyesi 1993, p. 488, Pl. VI/1-3.

³ Medgyesi 1993, p. 488, Pl. VII/6-9; Medgyesi 2015, p. 123 sq.

⁴ Kovács 1997, p. 374, Fig. 3.

⁵ Demo 2005, p. 85.

⁶ Demo 2005, p. 85.

⁷ Bakay 1978, p. 83, Pl. XXXVII/11-14.

⁸ Mărginean, Huszarik 2007, p. 36, Pl. XIII/1-5.

⁹ Stanojev 1989, p. 64 sq; Radičević, Špehar 2015, p. 143 sq, Fig. 2/2.

¹⁰ Demo 2009, p. 112.

¹¹ Medeleț, Tănase, Gáll 2001, p. 99, Fig. 3/4-6.

¹² cf. Demo 2005, Fig. 3.

¹³ Demo 2009, p. 426, Fig. 20.

point (h = 10.55 cm, h of the blade = 6 cm, h of the spine = 4.55 cm, width = 2.63 cm, thickness = 0.35 cm)/in the filling soil, above the chest in M. 75 (**Fig. 4**).

2. Iron rhombic arrow point, very oxidized (Length = 6.54 cm, width = 2.90 cm, thickness = 0.36 cm) with the shoulders keened towards the passage, with a preeminent median rib, in longitudinal sense, on both sides. The passing to the spine is made through a passage, and the spine has a sharp point and it is being preserved on the body with other remains of rotten brown colored wood (3.18 cm)/oblique thrust in the ground, above the chest in M. 74 (**Fig. 1**).

3. Arrow point with rhombic blade, the shoulders keened towards the passing of the spine, the point enlarged and rounded with longitudinal median rib, having the spine marked by the preeminent spine and broken point (2.32 cm) and rounded, presents solitary remains of rotten wood from the rod, very rusty (**Fig. 5**; h = 6.62 cm, h of blade = 4.30 cm, width = 1.67 cm, thickness = 0.25 cm). Arrow point with rhombic blade, the shoulders slightly erased towards the blunt point, with median longitudinal rib, having the spine with the passing preeminent and sharp point, broken, it preserves remains of brownish-yellow rottenness (**Fig. 6**; h = 7.48 cm, h blade = 5.10 cm, h spine = 2.38 cm, width = 1.57 cm, thickness = 0.30 cm)/at the unveiling of the skeleton M. 105, on the bottom of the ditch.

4. Iron arrow point, very oxidized, with the rhombic blade and preeminent median rib along the longitudinal axe. The long spine of 3.18 cm has the passing towards the blade marked by a passing spared in the iron object (**Fig. 2**; h = 3.28 cm, width = 2.76 cm, thickness = 0.35 cm). Iron arrow point, very oxidized, having the rhombic blade with the shoulders dropped towards the base and slightly embossed, straitened towards the point. The spine with passing towards the blade and remains of rotten wood from the rod has 2.40 cm and the point sharpened by straitening. The blade with a median longitudinal rib, slightly developed. The point of the blade is being chipped (**Fig. 3**; h = 7.9 cm, width = 2.22 cm, thickness of the blade = 0.30 cm). S. XI/Pit 4.

The depositing of the arrows in bunch is a frequent custom in the Hungarian cultural environment, being noticed also in other 10th century cemeteries in the Romanian area, as example Alba Iulia - *Stația de Salvare*/M. 54, Vârșand - *Movila dintre vii*/M. 33¹⁴ and Orăștie - *Dealul Pemilor X2*/M. 14¹⁵.

The arrow points have analogies in the Carpathian Basin, being framed in the typology/classification Ruttkey 1976 in group B/ variants 1 a-c and 2 a-b, chronologically framed in the 10th-12th centuries¹⁶ ore into another typology,

¹⁴ Popescu 1956, p. 92, Fig. 84/1.

¹⁵ Țiplic, Pinter 2007, p. 155.

¹⁶ Ruttkey 1976, p. 327-333, Fig. 54.

forward elaborated by the same author in the type VI¹⁷. Arrow points, associated with remains of quivers (?), bone plates, a bracelet and two rings were recovered also from M. 26 from Csongrád - *Vendelhalom*, placed in the 10th century¹⁸.

An exception is being represented by the arrows from M. 155 (**Fig. 8-9**) that can be framed into a different type, especially used at hunting. Similar pieces, that can be framed in the type F¹⁹, were discovered at this chronological horizon, in locations as: Biharia/M. 1²⁰, Beregszász²¹, Kénezlő²², Tuszér - *Boszorkány-hegy*/M. 6²³, Streda nad Bodrogom - Kuhlova M. I/1926²⁴, Tiszszederkény - Tiszai Vegyi Kombinát /M. 2²⁵ and Karos - Eperjesszög II/M. 29²⁶.

The metallic fixtures from the quiver, sometimes associated with bone plates are being known also in other funerary discoveries as: Alba Iulia - *Stația de Salvare*. S. XII/M. 21²⁷, M. 304, M. 630, Biharia - *Dealul Șumuleu*/M. 8²⁸ and M. 6²⁹, Cluj Napoca - *Str. Zápolya*/M. 1, 4, 6, 8, 10 și 11, Cluj-Napoca - *Str. Plugarilor*/M. 4³⁰, M. 22³¹, Napoca - *Str. Kalevala/Situl I/Semenicului*. M. III³², Dudeștii Vechi - *Movila lui Dragomir*, Nădlac-*Lutărie*/M. 01, M. 04, M. 09 and M. 13³³, Orăștie - *Dealul Pemilor X2*/M. 13³⁴, Timișoara - *Cioreni*/M. B and M. G³⁵, Vârșand - *Movila dintre vii*/M. 7³⁶ and Voiteni/M. 3³⁷.

Also, in the Slovakian area, remains of fixtures from quivers were identified in the warrior graves from the 10th century cemeteries from: Bánov/M. 20³⁸, Cerveník/M. 9, și Sered I/M. 1/57, M. 8/53, M. 1/52.

¹⁷ Ruttkay 1982, p. 177, T. II.

¹⁸ Párducz, Tary 1939, p. 191, Pl. I/26-34.

¹⁹ Sebestyén 1932, p. 199 sq, Fig. 12/Tipul F.

²⁰ Hampel 1905, p. 852, Pl. 504/7.

²¹ Hampel 1907, p. 102, Pl. 2/9-11.

²² Josá 1914, p. 317, 327, XXIII, XXXIX kép.

²³ Hampel 1905, p. 672, Pl. 436/1-5; Hampel 1907, p. 146, Pl. 35/1-5; Révész 2000, p. 11, Pl. III/1-4; Istvánovits 2003, p. 335, Pl. 228/1-5.

²⁴ Nevizánsky, Košta 2009, p. 303sq, 322, Pl. IX/1-3, 5-6.

²⁵ Végh 1992, p. 62, Fig. 4/9-13.

²⁶ Révész 1996, p. 21, Pl. 39/10-13.

²⁷ Anghel 1999, p. 599-604.

²⁸ Cosma 2001, p. 519 sq, Pl. 13/16-18.

²⁹ Cosma 2001, p. 518, Pl. 9/6-7.

³⁰ Gáll, Gergely, Gál 2010, p. 126.

³¹ Gáll, Gergely, Gál 2010, p. 127.

³² Gáll, Gergely, Gál 2010, p. 124, Pl. 2/3-4; 4/1-19.

³³ Mărginean, Huszarik 2007, p. 36, Pl. XIII/1-5, XIV/1-3.

³⁴ Țiplic, Pinter 2007, p. 154.

³⁵ Rădulescu, Gáll 2001, 164, p. 180, Fig. 9/13.

³⁶ Popescu 1956, p. 90, Fig. 81/5-6.

³⁷ Medeleț, Tănase, Gáll 2001, p. 99.

³⁸ Točík 1968, p. 13, Pl. IV/1-3; Točík 1987, p. 194, Fig. 9/18 a-b.

The fixings from the quivers are being combined in graves with different artefacts: arrow points, fire strikers, flint, belts, knives, swords, stirrups, bits, separators/distributions from belts, plates made of bone from the arc, applies for belts and belts extremities.

A Säbelschwert comes from M. 165, with a rarer form, that contains heterogenous elements, characteristic for the sword (bended handle) and of the rapier (two bezels). The piece of harness was displayed in a wooden pod (87/94 cm; 12 cm), wide of 6 cm and very oxidized, with the bilateral margins sharpened, having the wooden handle with the wide spine and slightly bended in the fixing point with the blade (h = 13 cm, width handle = 1.44-1.82 cm, thickness handle = 0.38 m). The narrowed blade from the passing point towards the point is being widen gradually towards the handle (3.45-5.15 cm) and the margins present from point to point concavities resulted after braking the blade, favorized by the powerful oxidation. The 6 cm long guard, with thinned extremities was overlapped on the handle (h blade = 74 cm from the point towards the shoulder of the blade). On the middle of the pod there were an element of fixing/suspension made of iron. These type of exemplars are to be found at Kiskundorozsma - *Vöröshomok*³⁹, Abony⁴⁰, Mohács - *Téglagyár*/M. 1 și M. 4⁴¹, Rakamaz - *Strázsaalom*⁴² and Szentbékállá⁴³. In what concerns the grave from Kiskundorozsma, it can be sustained a dating at the end of the 10th century⁴⁴. These types of exemplars are being present in the Hungarian environment from the 10th century⁴⁵.

In the case of the discoveries from Bodrogvécs/Somotor-Več⁴⁶ and Szeged-Csongrádi ut 1⁴⁷, this type of weapon is being associated with coins, respectively with a dirham and a pieced issued by Constantin VII Porphyrogenitus/Romanos II (948-959). In L. Kovács's opinion, the dirhams are being chronologically placed around 960, and the Byzantine and West-European monetary emissions are the direct result of the wars/politically context of 954/955⁴⁸.

³⁹ Bálint 1963, p. 93, Fig. 3, XIV/1; Bakay 1965, p. 10, Fig. 10; Bakay 1967, p. 127-128.

⁴⁰ Kovács 1990, Fig. 2/B: 1.

⁴¹ Bakay 1965, p. 10, Fig. 26/3, 4-4a; Bakay 1967, p. 129, Pl. VIII/1-2, Fig. 14/3, 4.

⁴² Kiss 1985, p. 247.

⁴³ Bakay 1965, p. 14, Fig. 26/2-2a; Bakay 1967, p. 135, Fig. 14/2, Pl. VIII/4; Kovács 1990, Fig. 2/B: 9.

⁴⁴ Kovács 1990, p. 43.

⁴⁵ Bálint 1989, p. 215; Kovács 1976, p. 88 sq.

⁴⁶ Hampel 1905, II, p. 460, Fig. E; Bakay 1965, p. 16, Fig. 18; Bakay 1967, p. 140; Kovács 1989, p. 21; Kovács 1990, p. 40.

⁴⁷ Kovács 1989, p. 61; Kovács 1990, p. 40.

⁴⁸ Kovács 1990, p. 40.

An exemplar with the length of 83 cm was discovered in M. 13 from Szentes - *Szentlászló* where it was deposited in the left side of the deceased, from the hummers until the knee. In the composition of the funerary inventory there were also two 13 Giesler rings, plated of bones from the arc, a bunch of arrow points (in the right side of the basin), a pair of stirrups, a bit with bangles, knife, a belt made of iron. In the right side of the cannon above the knee was displayed a horse skull with the bones of the members⁴⁹.

The fighting axe discovered implanted at the deceased from M. 165 knees has a curved convex profile in vertically sense and the body very rusted. The arm of the edge is being beaten in four faces, and the opposite one, with the length of 8.84 cm has a shape of chisel and arched line, with curved angles. The orifice with the diameter of 2.22 cm is being placed towards the edge and it contains in the inner walls remains of rotten wood, brown-reddish, remains from the fixing handle. In the part of the orifice, the axe has the maximal length of 3.23 cm and it presents two rhombic shaped wings, bended in obtuse angle and heightened (h = 15.2 cm, width of blade = 4 cm).

The exemplar form M. 165 can be framed in the variant with rhomboid elongation (IV A Ruttkay, IV B Kovács, I Kirpičnikov, II Teodor, II Emandi), quite spread in the Hungarian environment from the 10th century⁵⁰. This variant has numerous analogies in the Eastern areal⁵¹, Hungary⁵², Banat⁵³, Transylvania⁵⁴ and Slovakia⁵⁵.

Type II Emandi, where the exemplar from M. 165 can be framed, present some characteristics: the body with a heightened nape (length = 15-19 cm), slightly bended, the blade narrow and curved, the nape in spine with rectangular section (4-6 cm) and circular fixing hole with the elongation of the muff in wings shape⁵⁶. Type IV A Ruttkay has a trapezoid and curve shape having the length between 14.5 and 15 cm and the width of the blade of 4.6 cm.

From the necropolis of Alba Iulia-*Stația de Salvare* there are three axes that present similar characteristics⁵⁷. The axe from S. VIII/M. 1 came from an inhumation grave with stone (adult) oriented East-West. Besides the animal

⁴⁹ Széll 1941, p. 241, Fig. 4 a, Pl. III A/1-15; Bakay 1965, p. 14, Fig. 17, 26/1-1a; Bakay 1967, p. 136, Fig. 14/1.

⁵⁰ Ruttkay 1976, p. 310, Fig. 42; Kovács 1980/81, p. 249.

⁵¹ Aleškovskij 1960, Pl. 1/6, 9; Starostin, Kazakov, Gabjašev 1973, p. 260, Pl.2/19; Kirpičnikov 1986, Pl. X/8; Khalikova, Kazakov 1977, p. 96, Pl. III/1; Teodor 2003, p. 192 sq, Fig. 5/5.

⁵² Révész 1996, p. 175, Pl. 113/8; Istvánovits 2003, p. 90, 338, Pl. 133/2, Fig. 171/8, Pl. 79; Jóna 1914, Fig. VIII.

⁵³ Rădulescu, Gáll 2001, p. 156, 180, Fig. 18/3.

⁵⁴ Țuțuianu 2005, p. 264; Țiplic, Pinter 2007, p. 155; Pinter, Țiplic 2006, p. 81, Fig. 179.

⁵⁵ Točík 1955, p. 489-494, Fig. 241; Fehér, Éry, Kralovánszky 1962, p. 42.

⁵⁶ Emandi 1981, p. 31 sq.

⁵⁷ Ciugudean 1996, p. 15, Fig. 86; Ciugudean 2006, p. 30, Fig. 43-44; Ciugudean 2007, p. 257.

offering (skull and horse members), displayed at -0.96 m depth, the inventory was composed of two ceramic pots, an iron knife, a fire striker and two finger rings). The axe (MNUAI F. 7318; h = 14.9 cm) presents an elongated nape (37.8 mm), slightly cambered and quadrilateral in section (17.5 x 12.5 mm). The oval orifice (20.8 x 19.1 mm) present the walls that are very cambered outside (3 cm) and elongated in vertical sense, in both directions, with angular wings. The blade curved towards inner and in vertical sense, it is being thickened gradually towards the point (9.35 cm), having an arched line (37.2 mm).

The second exemplar (MNUAI F. 7991) has the arm of the nape elongated backwards (38 mm), the nape slightly cambered, quadrilateral, with the edges splayed lateral. The orifice (19.6 x 18.6 mm) oval presents remains of wood from the rotten handle, thickened walls (27.7 mm) lateral and enlarged vertically with four angular wings from which two have the point broken. The blade, long of 85.5 mm it is thinned gradually towards the arched edge (32.1 mm) and it is being thickened by beating. In vertically profile, the axe is being curved in obtuse angle (h= 14.5 cm).

The axe with inv. number 7991 has marked on the discovery place S. XXXVIII/M.1, which probably is an error of inventorying, because that specific grave doesn't have an inventory, according to the description from the excavation. It can come either from S. XXXIII/M. 1 or S. XVIII/M. 1 according to the information that very kindly Horia Ciugudean provided us. The deceased S. XVIII/M. 1 (adult) had as a funerary inventory a pot, a loop ring, an iron knife and an iron battle axe.

The second possible grave from which this axe could have come, S. XXXIII/M. 1 was one of an adult, arranged with stones and oriented West-South-West – East-North-East. Its inventory consisted in an iron axe, a fire striker and a flint.

The last piece that is being preserved in the collections of MNUAI, came from the third grave from *Stația de Salvare* and it was registered with inventory number MNUAI 9527 (S. XVIII/M. 1?). This battle axe is being similar as a shape and characteristics with the exemplars discovered at Alba Iulia (Length= 155.20 mm, thickness of the edge = 12.28 mm x 13.99 mm, width of blade = 29.92 mm, diameter of fixing = 21.74 mm, ears = 25, 01 mm, length of the edge = 42, 41 mm).

This shape of axe is being frequently encountered in the Hungarian horizon and it presents some differences from the perspective of dimensions and shape. The iron axe axes appear in the warrior graves from the 10th century, in some deposit positions: in the quiver, on the left side of the deceased or plunged between the inferior members, possibly with protective role.

The three distributors of belts from M. 115 from *Izvorul Împăratului* were casted in bronze, in paten, with identical shape and similar dimensions. The

circular strut presents the oblique margin and the superior part plane, and the in the central field there are three spokes united in the middle of the space. The front part of each spoke is being decorated with a long groove, thickened at the central end and sharpened at the opposite extremity. The back side of the spike is being plan-concave (h = 3.55 cm, width bar = 0.4 cm, thickness = 0.44 cm; h = 3.52 cm, width bar = 0.44 cm, thickness = 0.45 cm; h = 3.50 cm, width bar = 0.39 cm, gr. = 0.40 cm). One of the three distributors have on the edge mineralizes remains of textile and thin wires, perpendicular woven. Two exemplars were identified between the femur and the third one in the exterior of the right calf. These belt separators were used as accessories in sustaining/suspension of the armament.

The belt distributors, similar from the perspective of the circular frame, but slightly different from the perspective of the central element appear in a series of collections and discoveries as: Alba Iulia - *Stația de Salvare*⁵⁸, Corint⁵⁹, Muzeul din Belgrad⁶⁰, Gyula - *Szövetkezeti Tégtagyár*⁶¹, Várşand - *Movila dintre vii/M.* 33⁶², Csanytelek - *Dilitor/M.* 10⁶³, Dolný Peter II/M. 61⁶⁴, M. 64⁶⁵, Karos, Kiskunfélegyháza - *Izsáki út-Határdomb*⁶⁶, Komárno⁶⁷, Košúty⁶⁸, Nagykörű⁶⁹, Păcuilui Soare⁷⁰, Sárretudvari - *Hízó föld/M.* 258⁷¹, Sárretudvari - *Poroshalom/M.* 2⁷², and Szécsény - *Pórpást*⁷³.

The extreme reduced number of graves with pieces of armament and harness, along with some other that preserve Hungarian traditions, seem to indicate, once again, that only a part of this ethnical community accepted the transition to Christianity.

The only harness pieces discovered in the cemetery are being represented by an articulated bit, a pair of stirrups and an iron trapezoid belt, all coming from M. 173. The stirrups were displayed one over the other on the left cannon, and the bit on the inferior extremity of the same cannon. Near the

⁵⁸ Ciugudean 1996, p. 14, Fig. 56; Ciugudean 2006, p. 31, Fig. 62.

⁵⁹ Davidson 1952, p. 306, Pl. 125/2645-2646.

⁶⁰ Bálint 1991, Pl. XXXIIIa/23-24.

⁶¹ Medgyesi 2015, p. 71.

⁶² Popescu 1956, p. 92, Fig. 84/3.

⁶³ Széll 1941, p. 246, Pl. IX B/25.

⁶⁴ Točík 1968, p. 22 sq, Pl. XIII/17, 23-24.

⁶⁵ Točík 1968, p. 23, Pl. XX/23-24.

⁶⁶ Fodor 1996, p. 329 sq, Fig. 2.

⁶⁷ Točík 1968, p. 32, Pl. XX/41.

⁶⁸ Točík 1968, p. 32, Pl. XXI/13; Chropovský 1955, p. 264-275.

⁶⁹ Fodor 1996, p. 244, Fig. 2; Hampel 1905, p. 556sq, Pl. 385/6.

⁷⁰ Diaconu, Vilceanu 1972, p. 160, Fig. 63/3-5.

⁷¹ Fodor 1996, p. 273, Fig. 40; Nepper 2002, p. 350, Pl. 331/1.

⁷² Nepper 2002, p. 395-398, Pl. 352/8.

⁷³ Patay 1957, p. 64, Fig. 6.

stirrups, on the inside of the femurs, were displayed the bone applies from the arc. In the typology proposed by Csanád Bálint, M. 173 which had in inventory pieces of harness, it can be classified as type I Bálint⁷⁴.

The depositing of the harness pieces on/in the inferior member region is quite frequent in the Hungarian graves from the 10th centuries from the European space.

The bit discovered in M. 173 is being composed of two struts with an articulation at the middle and two circular rings at the ends/type II Ruttkay⁷⁵. This shape, quite spread in the 10th century has analogies between the materials discovered in the graves from Futog⁷⁶, Hodoni - *Pocioroane*/M. 17⁷⁷, Mâsca⁷⁸, Nădlac - *Lutărie*/M. 01, M. 04, M. 09, M. 10 și M. 13⁷⁹, Sárkadkeresztúr - *Barna tanya*/M. 81⁸⁰, M. 117⁸¹, Szakáld⁸², Batajnica⁸³, Magyarhomorog - *Könyadomb*/M.23⁸⁴, Voiteni/M. 3⁸⁵ and M. 6⁸⁶.

The frequency of this shape is being also noticed in the 10th century cemeteries from South-Western Slovakia at: Horný Jatov - Trnovec⁸⁷, Bánov/M. 20⁸⁸, M. 27⁸⁹, Cerveník/M. 7⁹⁰, M. 9⁹¹, Dolný Peter II/ M. 61⁹², M. 107⁹³, Nové Zámky/M. 47⁹⁴, Prša/M. 103, Sered I/M. 1/52⁹⁵, M. 6/53⁹⁶, M. 8/53⁹⁷, M. 20/53⁹⁸, Sered II/M. 4/55⁹⁹ and M. 12/55¹⁰⁰.

⁷⁴ Bálint 1969, p. 108.

⁷⁵ Ruttkay 1976, p. 357 sq, Fig. 75.

⁷⁶ Stanojev 1989, p. 124, Fig. 681.

⁷⁷ Bejan, Moga 1979, p. 159, Fig. 3/2; Drașovean, Teicu, Muntean 1996, p. 37, Pl. LXIII/4.

⁷⁸ Cosma 2001, p. 523, Pl. 18/3-4.

⁷⁹ Mărginean, Huszarik 2007, p. 29, 34, Pl. XI/1-5.

⁸⁰ Medgyesi 1993, p. 488, Pl. VIII/3.

⁸¹ Medgyesi 1993, p. 489, Pl. XI/3.

⁸² Végh 1970, p. 87, t. XII/3, XIII/1.

⁸³ Radičević, Špehar 2015, p. 144, 146, Fig. 4/3.

⁸⁴ Kovács 1997, p. 374, Fig. 4/3.

⁸⁵ Medeleț, Tănase, Gáll 2001, p. 99, Fig. 5/3.

⁸⁶ Medeleț, Tănase, Gáll 2001, p. 100, Fig. 7/4.

⁸⁷ Točik 1955, p. 490 sq, Fig. 236.

⁸⁸ Točik 1968, p. 12, Pl. IV/16; Točik 1987, p. 194, Fig. 7/7.

⁸⁹ Točik 1968, p. 15, Pl. VI/15.

⁹⁰ Točik 1968, p. 19, Pl. X/28.

⁹¹ Točik 1968, p. 20, Pl. XII/4.

⁹² Točik 1968, p. 22, Pl. XIII/11, 14.

⁹³ Točik 1968, p. 23 sq, Pl. XIV/17.

⁹⁴ Rejholcová 1974, p. 439, Pl. III/7.

⁹⁵ Točik 1968, p. 42, Pl. XXX/10.

⁹⁶ Točik 1968, p. 43, Pl. XXXII/14.

⁹⁷ Točik 1968, p. 45, Pl. XXXIII/14.

⁹⁸ Točik 1968, p. 48, Pl. XXXVIII/6.

⁹⁹ Točik 1968, p. 54, Pl. XLVI/9.

¹⁰⁰ Točik 1968, p. 194.

At Vojnice/M. 5 the articulated bit (type II Ruttkay) appears in a grave with horse offering, a pair of stirrups, bracelets, belt, knife, bunch of arrow points with the points facing up (displayed near the right femur) and West-European coins issued by Hugo de Provence / 926-945, Hugo și Lothar II / 932-950, Lothar II / 942-950 și Berengar / 888-924¹⁰¹.

In the inventory of M. 17 from Csongrád - *Vendelhalom* it was noticed a bit of this type displayed on the left's foot paw, which is being associated with a pair of stirrups, a sword that was on the left side of the body (from humerus until the thigh-bone), silver links and bronze pieces¹⁰². Another example that can be mentioned is the one from Sered II from M. 2/54, where the stirrups were displayed in the zone of the right knee and on the left shank, and the bit on the right shank¹⁰³.

The trapezoid iron belt (M. 173) has analogies in the 10th centuries from Biharia - *Dealul Șumuleu*/M. 8¹⁰⁴, Șiclău/M. 1, M. 2, M. 7, M. 9 și M. 10¹⁰⁵, Nădlac - *Lutărie*/M. 13¹⁰⁶, Cervenik/M. 7¹⁰⁷, Dolný Peter II/M. 60¹⁰⁸ and M. 107¹⁰⁹ and Sládkovičovo/M. 2¹¹⁰.

Another belt from M. 143 is similar with the exemplar discovered in the necropolis from Gerendás¹¹¹.

The stirrups discovered in the M. 173 belong to the type IV-3 Ruttkay¹¹². The similar variants placed in the 10th century appear in the European space from Batajnica¹¹³, Gyula - *Szövetkezeti Téglagyár*¹¹⁴, Beszterec¹¹⁵, Csongrád - *Vendelhalom*/M. 17¹¹⁶, Deva - *Micro 15*¹¹⁷, Hodoni - *Pocioroane*/M. 17¹¹⁸, Dolný Peter II/M. 60¹¹⁹, Hódmezővásárhely - *Szakálhát*¹²⁰, Nădlac - *Lutărie*/M.

¹⁰¹ Točík 1968, p. 60, Pl. LII/11; Točík 1987, p. 194; Liptakova 1964, p. 243, Fig. 4, 5/18.

¹⁰² Párducz, Tary 1939, p. 191, Pl. II/15.

¹⁰³ Točík 1968, p. 50, Fig. 18/2.

¹⁰⁴ Cosma 2001, p. 519 sq, Pl. 13/13.

¹⁰⁵ Cosma 2001, p. 531, Pl. 31/5, 32/3, 35/29, 38/4, 40/3.

¹⁰⁶ Mărginean, Huszarik 2007, p. 31, Pl. IV/6.

¹⁰⁷ Točík 1968, p. 19, Pl. X/27.

¹⁰⁸ Točík 1968, p. 22, Pl. XIV/9.

¹⁰⁹ Točík 1968, p. 23, Pl. XIV/5.

¹¹⁰ Točík 1992, p. 158 sq, Fig. 102/6.

¹¹¹ Bakay, Kiszely 1973, Pl. X.

¹¹² Ruttkay 1976, p. 355, Fig. 74.

¹¹³ Radičević, Špehar 2015, p. 144, 146, Fig. 4/3.

¹¹⁴ Medgyesi 2015, p. 84.

¹¹⁵ Kovács 1986, p. 209, Fig. 5/1-2.

¹¹⁶ Kovács 1986, p. 209, Fig. 5/6.

¹¹⁷ Țuțuianu 2005, p. 265, Pl. I/15, 17.

¹¹⁸ Drașovean, Țeicu, Muntean 1996, p. 37, Pl. LXIV/4.

¹¹⁹ Dušek 1964, p. 207, Fig. 4, 5/6-7.

¹²⁰ Kovács 1986, p. 211, Fig. 6/1-4.

01¹²¹, M. 09¹²², M. 13¹²³, Măscu¹²⁴, Rád - *Kishegy*/M. II sau IV¹²⁵, Sárkadkeresztúr - *Barna tanya*/M. 81¹²⁶, M. 117¹²⁷ and Timișoara - *Cioeni*¹²⁸. The depositing of the stirrup/stirrups on the inferior members of the deceased is a frequent custom, being also encountered in the case of other discoveries. In the typology proposed by Csanád Bálint, M. 173 which had as an inventory only the harness pieces can be framed in type I¹²⁹.

The pottery is being represented by two exemplars, identified in M. 165 (right side of the occipital bone) and M. 168 (near the left heel). Unfortunately, the two pots appear in the archive photos, but we couldn't identify them in the collections of the National Museum of the Union from Alba Iulia. But, in the photos there can be noticed the fact that they are small-size pots, similar with the other recipients identified in the cemetery from Izvorul Împăratului. The ceramic pots from *Izvorul Împăratului* have the height between 10.6-11.1 cm, the mouth diameter between 7.8-10 cm, and the diameter of the base between 4-10 cm. The position of displaying the pot from M. 168 there was also encountered in the case of M. 664 (warrior) and from the *Stația de Salvare*, which had as inventory three arrow points and a bronze ring.

Kecel belts identified in the cemetery from *Izvorul Împăratului* have a different functionality, being used as artefacts for the deceased belt, but also as an accessor for fixing the necessary belts for suspending the armament. By its characteristics, the exemplar from M. 115 can be placed in type A *Révész*, quite spread in the Hungarian environment from the 10th-11th centuries¹³⁰.

The bronze *belt* of tri-lobed shape (M. 173) has analogies in the discoveries from the Romanian space, chronologically place at 10th century horizon. From the shape perspective, but different in what concerns the décor, the piece from *Izvorul Împăratului* has similarities with the exemplars from Biharia - *Dealul Șumuleu*/M. 8¹³¹ and Cauaceu¹³² and it seems to indicate an Asian origin.

The knives were discovered in M. 133 (on the left femur), M. 143 (near the left hip), M. 168, M. 173 (in the exterior of the left femur), M. 177 (between

¹²¹ Mărginean, Huszarik 2007, p. 33, Pl. IX/1-2.

¹²² Mărginean, Huszarik 2007, p. 34, Pl. X/1-2.

¹²³ Mărginean, Huszarik 2007, p. 34, Pl. X/3-4.

¹²⁴ Cosma 2001, p. 523, Pl. 18/1-2.

¹²⁵ Kovács 1986, p. 215, Fig. 9/1-2.

¹²⁶ Medgyesi 1993, p. 488, Pl. VIII/1-2.

¹²⁷ Medgyesi 1993, p. 489, Pl. XI/1-2.

¹²⁸ Rădulescu, Gáll 2001, p. 155, Fig. 2/1-2.

¹²⁹ Bálint 1969, p. 108.

¹³⁰ Révész 1987, p. 270.

¹³¹ Cosma 2002, p. 124, 177, Pl. 62/5.

¹³² Cosma 2002, p. 124, 181, Pl. 71/15.

the heels) and M. 210 (parallel with the inferior third of the left humerus, inside). Their length, according to the preservation state is being comprise between 4-14.9 cm. The exemplars from *Izvorul Împăratului* have analogies in the classification used by Ž. Demo for the necropolis from *Lijeva bara*¹³³. So, there can be noticed knives with right edge (type 1.1) represented by the exemplars from M. 133 and M. 177 but also others with the right edge, bented towards the point (type 1.2) illustrated by the pieces from M. 143 and M. 173.

The stone for sharpening from was displayed on the left side of the basin. From *Izvorul Împăratului*/M. 197 there is another stone for sharpening, which came from a woman grave where it was displayed near the humerus, in the exterior. The limestone knives used for sharpening some artefacts with domestically usage or armament, are being present in the funerary inventories from Alba Iulia - *Stația de Salvare* in M. 614 and M. 691 (displayed in a warrior grave, between the femurs).

The fire strikers and flint are being represented by the exemplars from M. 115 (left side of the basin), M. 143 (left hip), M. 173 (under right hand palm) and M. 177 (on the left humerus head). Generally, the inferior center of the fire strikers is triangular, and the section of the body which is being framed in this area is rectangular or foursquare. At some exemplar it was preserved one or both rings in the end of the arms (M. 115, M. 143, M. 173). There can be distinguished two types, with similitudes in Ž. Demo's classification¹³⁴: type 2.1 a/a represented by the pieces from M. 173 and M. 177, characterized by a "lyre" shape, with a plate base and arched/curved arms in the shape of "C" letter. The length of the fire strikers is between 6.16-7.20 cm, and the length has dimensions between 2.82 and 3.87 cm. The bone pieces are being represented by *a bone piercer* (M. 115) and a massive wild boar fang (M. 177).

The globular buttons, composed of two calottes glued on vertical, hollow inside (M. 115) have analogies in the epoch in a series of funerary discoveries: Alba Iulia - *Stația de Salvare/phase II*, Alba Iulia - *Str. Brîndușei*/M. 159¹³⁵, Galoșpetreu - *Dâmbul Morii*¹³⁶, Gyula - *Szövetkezeti Téglagyár*¹³⁷, Nădlac - *Lutărie*/M. 12¹³⁸, Șiclău - *Gropoie*/M. 09, Vukovar - *Lijeva bara* and Csongrád - *Vendelhalom*/M. 10¹³⁹.

The twisted ring (29 Gisler shape) is being illustrated by the exemplar from M. 143. Similar examples, made by twisting three silver wires with the

¹³³ Demo 2009, p. 410, Fig. 14/1.1, 1.2.

¹³⁴ Demo 2009, p. 413 sq, Fig. 14/2.1 a/a, 2.1 a/b.

¹³⁵ Dragotă *et alii* 2009, p. 64, Pl. 65.

¹³⁶ Cosma 2002, p. 190, Pl. 102/4.

¹³⁷ Medgyesi 2015, p. 71.

¹³⁸ Mărginean, Huszarik 2007, p. 31, Pl. IV/8.

¹³⁹ Párducz, Tary 1939, p. 191, Pl. I/16-17.

extremities thinned by knocking, also appear in other contexts at *Izvorul Împăratului* (M. 143, M. 150, M. 159, M. 197 and M. 198). An exception is being represented by the piece from M. 159, made by three twisted wires plus one made of filigree. The situations identified at Alba Iulia - *Izvorul Împăratului* (M. 143, M. 159) and in the cemetery from *Stația de Salvare*/M. 455, allow a chronological correction of this shape, dated in the Bjelo Brdo culture in the 11th century. So, the discoveries from Alba Iulia indicate the usage of this shape (including type 30 Giesler) from the second half of the 10th century. The existence of the shape at this chronologic level, can be correlated with Byzantine faience artefacts that entered in the area through the mission from 953.

In the category of finger rings can be also place the two exemplars from M. 144, spread in the 10th century.

The loop rings (M. 115, M. 143, M. 144, M. 165 and M. 177) appear between one and two exemplars/grave. Excepting the exemplar from M. 115, made of a golden (?) rhombic wire, the rest were made of a circular/lenticular bronze wire. Their diameter oscillates between 1.14/1.31 - 2 cm and the width of the wire between 0.10 - 0.19 cm.

Excepting M. 115 there can be distinguished a fusion of the other 10 warrior graves in two groups: group I, the largest, includes M. 133, M. 143, M. 144, M. 173, M. 177, M. 208 and M. 210; group II includes include M. 165, M. 168 (the leader?) and M. 184. On the other hand, the majority of the arc plates appear in the warrior graves from group I, and in the case of group II, only in one grave (M. 184). In what concerns the pottery, the two pots were recover from group II graves (M. 165, M. 168). Quite interesting is also the inventory of the two graves (M. 165, M. 184/profaned) which frame the leader of this military suite (M. 168).

The position of M. 115 towards the other graves is not clear, because the plan where it was marked doesn't own the elements which could allow the correlation with the second plan. Without discussions, we have a here a military suite which ensured the protection of Gyula in this period of time, which was quite troubled. It is probably that this suite accompanied and protected him in the trip to Constantinople around 953.

The armament and harness pieces from the Alba Iulia - *Izvorul Împăratului* graves, are being framed without any difficulties in the second half of the 10th century. In the cemetery from Alba Iulia - *Stația de Salvare* were discovered armament pieces that can be framed in this chronological level, but also other older, that can be connected with the entering of the first Hungarian communities in the zone of the Ancient Apulum.

ANTURAJUL MILITAR AL LUI GYULA ILUSTRAT DE CIMITIRUL DE LA ALBA IULIA – IZVORUL ÎMPĂRATULUI (SEC. X-XI)

ABSTRACT

The article is being focused on the Hungarian warrior graves discovered in the cemetery from Alba Iulia – *Izvorul Împăratului/Crăicuta* point, an important landmark for the history of Christianity from Transylvania and European space. The revitalization of Christianity on the Eastern way was produced through Gyula, one of the Hungarian leaders who entered in Transylvania in the first decades of the 10th century. The warrior graves from this cemetery contain in their funerary inventory pottery, armament pieces (Säbelschwert, quivers, arrow points, bone arc plates, battle axe), harness (stirrups, bit, belts), domestic usage objects (fire striker, flint, knives) and garnishments (loop rings or finger rings). With only one exception (M. 115) the rest of the warrior graves are being grouped by two: group I, the largest, includes M. 133, M. 143, M. 144, M. 173, M. 177, M. 208 and M. 210; group II, a smaller one, composed of M. 165, M. 168 (the leader?) and M. 184. Most of the bone arc plates appear in the group I and in the case of group II, only in one grave (M. 184). In what concerns the pottery, the two pots were recovered from the graves belonging to group II (M. 165, M. 168). The leader of this military suite (M. 168) is being framed by two other warrior graves (M. 165, M. 184/profaned).

In the ritual habits there are egg deposits offerings, horse deposits and the arranging of most of the sepulcher pits with lithic materials.

These warrior graves indicate a military suite which ensured Gyula's protection in this period of time (the second half of the 10th century). It is possible that, this military suite accompanied and assured his protection also in his ride to Constantinople in 953.

FIGURE CAPTION

Fig. 1. Alba Iulia, the cemetery from *Izvorul Împăratului*, with grave 115 marked on the plan (drawing by Anca Mătiș, Mihai Blăjan).

Fig. 2. Alba Iulia, the cemetery from *Izvorul Împăratului*, with graves 133, 143, 144, 165, 168, 173, 177, 184, 208 and 210 marked on the plan (drawing by Anca Mătiș, Mihai Blăjan).

Fig. 3-5. Alba Iulia, the cemetery from *Izvorul Împăratului*, with the inventory of grave 115 (drawing by Valentin Deleanu, Mihai Blăjan).

Fig. 6. Alba Iulia, the cemetery from *Izvorul Împăratului*, with the inventory of grave 133 (drawing by Valentin Deleanu, Mihai Blăjan).

Fig. 7-8. Alba Iulia, the cemetery from *Izvorul Împăratului*, with the inventory of grave 143 (drawing by Valentin Deleanu, Mihai Blăjan).

Fig. 9. Alba Iulia, the cemetery from *Izvorul Împăratului*, with the inventory of grave 144 (drawing by Valentin Deleanu, Mihai Blăjan).

Fig. 10. Alba Iulia, the cemetery from *Izvorul Împăratului*, with the inventory of grave 165 (drawing by Valentin Deleanu, Mihai Blăjan).

Fig. 11. Alba Iulia, the cemetery from *Izvorul Împăratului*, with the inventory of grave 168 (drawing by Valentin Deleanu, Mihai Blăjan).

Fig. 12-16. Alba Iulia, the cemetery from *Izvorul Împăratului*, with the inventory of grave 173 (drawing by Valentin Deleanu, Mihai Blăjan).

Fig. 17-18. Alba Iulia, the cemetery from *Izvorul Împăratului*, with the inventory of grave 177 (drawing by Valentin Deleanu, Mihai Blăjan).

Fig. 19. Alba Iulia, the cemetery from *Izvorul Împăratului*, with the inventory of grave 184 (drawing Valentin Deleanu, Mihai Blăjan).

Fig. 20-21. Alba Iulia, the cemetery from *Izvorul Împăratului*, with the inventory of grave 208 (drawing by Valentin Deleanu, Mihai Blăjan).

Fig. 22. Alba Iulia, the cemetery from *Izvorul Împăratului*, with the inventory of grave 210 (drawing by Valentin Deleanu, Mihai Blăjan).

Fig. 23. Alba Iulia, the cemetery from *Izvorul Împăratului*, with arrow points from M. 74, 75, 105, 168 and Gr. 4/S. XI (drawing by Valentin Deleanu, Mihai Blăjan).

Bibliographical abbreviations:

AAASH - *Acta Archaeologica Academie Scientiarum Hungaricae*, Budapest.

Alba Regia - *Alba Regia*, Székesfehérvár.

Apulum - *Acta Musei Apulensis*, Alba Iulia.

Arch Rozhledy - *Archeologické Rozhledy*, Praga.

ArchÉrt - *Archeologiai Értesítő*, Budapest.

BMMK - *A Békés Megyei Múzeumok Közleményei*.

Brukenthal Acta Musei - *Brukenthal Acta Musei*, Sibiu.

CCA - *Cronica Cercetărilor arheologice din România*, București.

HOMÉ - *A Herman Ottó Múzeum Évkönyve*, Miskolc.

JAMÉ - *Jósa András Múzeum Évkönyve*, Nyíregyháza.

MittArchInst - *Mitteilungen des Archäologischen Instituts der Ungarischen Akademie der Wissenschaften*, Budapest.

MFME - *StudArch - Mora Ferencz Múzeum Évkönyve. Studia Archaeologica*, Szeged.

Sargetia - *Sargeția. Acta Musei Devensis*, Deva.

Slov.Arch - *Slovenská Archeológia*, Nitra.

SovArh - *Sovetskaja Archeologija*, Moscova.

SHP- *Starohrvatska Prosvjeta*, Split.

ŠtudZvesti - *Študijne Zvesti Arheologického Ústavu Slovenskej Akademie Vied*, Nitra.

Tibiscus - *Tibiscus*, Muzeul Banatului, Timișoara.

Bibliography:

Aleškovskij 1960 - M. H. Aleškovskij, "Kurgany russkih družinnikov XI-XII vv./Tumulus de guerriers russes des XI e et XII e siècles", *SovArh*, 1/1960, p. 70-90.

Anghel 1999 - D. Anghel, "Restaurarea și propuneri de reconstituire a unor accesorii metalice aparținând unei tolbe pentru săgeți", *Apulum*, XXXVI, 1999, p. 599-604.

- Bakay 1967 - K. Bakay, "Archäologische studien zur frage der ungarischen Staatsgründung. Angaben zur organisierung des Fürstlichen heeres", *AAASH*, XIX/1-2, 1967, p. 105-173.
- Bakay 1978 - K. Bakay, "Honfoglalás – és államalapítás – kori temetők az Ipoly mentén", *StudCom*, 6, Szentendre, 1978.
- Bálint 1963 - A. Balint, "Kiskundorozsma-Vöröshomok dűlői leletek", *MFME*, 1963, p. 91-100.
- Bálint 1969 - Cs. Bálint, "A honfoglalás kori lovastemetkezések néhány kérdése", *MFME*, 1, 1969, p. 107-114.
- Bálint 1991 - Cs. Bálint, *Die Archäologie der Steppe. Steppenwölker zwischen Volga und Donau vom 6. bis 10. Jahrhundert*, Böhlau Verlag, Wien-Köln, 1989.
- Bálint 1991 - Cs. Bálint, *Südungarn im 10. Jahrhundert*, Budapest, 1991.
- Bakay 1965- K. Bakay, Régészeti tanulmányok a magyar államalapítás kérdéseihez, Pécs, 1965.
- Bakay, Kiszely 1973 - K. Bakay, I. Kiszely, "Újabb adatok Békés megye honfoglaláskori történetéhez./New data on the history of the county of Békés in the period of the Hungarian conquest", *BMMK*, 2, 1973, p. 63-97.
- Bejan/Moga 1979 - A. Bejan, M. Moga, "Necropola feudal timpurie de la Hodoni (jud. Timiș)", *Tibiscus*, 5, 1979, p. 159-168.
- Blăjan 2002 - M. Blăjan, "Alba Iulia, jud. Alba (Apulum). Punct: Izvorul Împăratului. Cod sit: 1026. 13", *CCA*, XXXVI, București, 2002, p. 33.
- Blăjan 2006 - M. Blăjan, "Alba Iulia, jud. Alba. Punct: Izvorul Împăratului. Cod sit: 1026.13. Campania 2005. Autorizație de cercetare sistematică nr. 6/2005", *CCA*, XL, 2006, p. 70-72.
- Blăjan 2007 - M. Blăjan, "Alba Iulia, jud. Alba. Punct: Izvorul Împăratului. Cod sit: 1026.13. Campania 2006. Autorizație de cercetare sistematică nr. 5/2006", *CCA*, XLI, 2007, p. 54-57.
- Chropovský 1955 - B. Chropovský, "Výskum staromadarského pohrebišta v Košútoch okr. Galanta". *Slov.Arch.*, III, 1955, p. 264-275.
- Ciugudean 1996 - H. Ciugudean, *Anul 1000 la Alba Iulia. Între istorie și arheologie*. Catalogul expoziției, Alba Iulia, 1996.
- Ciugudean 2006 - H. Ciugudean, "Alba Iulia - Stația de Salvare", H. Ciugudean, Z. K. Pinter, G. T. Rustoiu (Coord.) *Habitat-Religie-Etnicitate: Descoperiri arheologice din secolele IX-XI în Transilvania/Habitat-Religion-Ethnicity: 9th-11th Century Archaeological Finds in Transylvania*. Catalog de expoziție/Exhibition Catalogue, Editura Altip, Alba Iulia, 2006, p. 12-32.
- Ciugudean 2007 - H. Ciugudean, "Pottery offerings in the Early Middle Age cemetery of Alba Iulia - „Stația de Salvare”, C. Cosma (Ed.) *Funerary offerings and votive depositions in Europe's 1st*

- millennium AD.: cultural artifacts and local identities, Cluj-Napoca, Editura Mega, 2007, p. 243-262.
- Cosma 2001 - C. Cosma, "Gräberfelder, Einzelgräber und Grabfunde Unsicheren Charakters aus dem 9. – 10. Jh. Im Westen und Nordwesten Rumäniens", *StudArchHist*, IV, 2001, p. 499-565.
- Cosma 2002 - C. Cosma, *Vestul și nord-vestul României în secolele VIII-X d. H./The West and North-West Territories of Romania in the 8th-10th Centuries A.D.*, Editura Nereamia Napocae, Cluj-Napoca, 2002.
- Davidson 1952 - Gladys R. Davidson, *Corinth. Results of excavations conducted by the American School of Classical Studies at Athens. Volume XII. The Minor Objects*, The American School of Classical Studies at Athens, Princeton, New Jersey, 1952.
- Demo 2005 - Ž. Demo, "Refleksni luk s ranosrednjovjekovnog groblja Vukovar-Lijeva Bara (gr. 92)/The composite bow from the early medieval cemetery of Vukovar-Lijeva Bara (grave 92)", *SHP*, III, 32, 2005, p. 77-89.
- Demo 2009 - Ž. Demo, *Ranosrednjovjekovno groblje bjelobrdske kulture: Vukovar – Lijeva Bara (X–XI. stoljeće) An Early Medieval Cemetery of the Bijelo Brdo Culture: Vukovar – Lijeva Bara (10th–11th Centuries)*, Arheoloski muzej u Zagrebu, vol. VI/1-2, Zagreb, 2009.
- Diaconu, Vilceanu 1972 - P. Diaconu, D. Vilceanu, *Păciul lui Soare. Cetatea bizantină. Vol. I*, Editura Academiei Republicii Socialiste România, 1972.
- Dragotă et al. 2009 - A. Dragotă, G. T. Rustoiu, M. Drîmbărean, V. Deleanu, S. Oța, *Necropola medieval timpurie de la Alba Iulia – Str. Brîndușei. Cercetările arheologice din anii 1997-2008*, Editura Altip, Alba Iulia, 2009.
- Dragotă et al. 2015 - A. Dragotă, G. T. Rustoiu, M. Drîmbărean, V. Deleanu, "The early medieval necropolis from Alba Iulia - Izvorul Împăratului. Archaeological researches in 2014", *Apulum*, LII, 2015, p. 321-349.
- Drașovean/Țeicu/Muntean 1996 - Fl. Drașovean, D. Țeicu, M. Muntean, *Hodoni. Locuirile neolitice târzii și necropola medievală timpurie*, Reșița, 1996.
- Dušek 1964 - M. Dušek, "Kostrové prhrebisko z X. a XI. storočia v Dolnom Petri II", *ŠtudZvesti*, 14, 1964, p. 197-222.
- Emandi 1981 - I.-E. Emandi, "Cercetări privind uneltele de tăiat de pe teritoriul României, în perioada secolelor IX-XVII", *Studii și Comunicări de Istorie a Civilizației Populare din România*, vol. 2, 1981, p. 19-65.
- Fehér, Éry, Kralovánszky 1962

- G. Fehér, K. Éry, A. Kralovánszky, *A Közep-Duna-Medence Magyar honfoglalás-és kora Árpád-kori sírleletei*. Akadémiai Kiadó, Budapest, 1962.
- Fodor 1996 - I. Fodor, *A honfoglaló magyarság*, Magyar Nemzeti Múzeum, Budapest, 1996.
- Gáll, Gergely, Gál 2010 - E. Gáll, B. Gergely, S. Gál, *La răscruce de drumuri. Date arheologice privind teritoriul oraşului Cluj -Napoca în secolele X-XIII*, Editura Kriterion, Cluj-Napoca, 2010.
- Hampel 1905 - J. Hampel, *Altertümer des frühen Mittelalters in Ungarn*, Braunschweig, I-III, 1905.
- Istvánovits 2003 - E. Istvánovits, *A Rétköz honfoglalás és Árpád-kori emlékanyaga*, Nyíregyháza, 2003.
- Jósa 1914 - A. Jósa, "Honfoglaláskori emlékek Szabolcsban II", *ArchÉrt*, XXXIV/3, 1914, p. 168-184, 303-340.
- Khalikova, Kazakov 1977 - E. A. Khalikova, E. P. Kazakov, "Le cimetière de Tankeevka", *Les anciens hongrois et les ethnies voisines à l'est*. Akadémiai Kiadó, Budapest, 1977, p. 21-222.
- Kirpičnikov 1986 - A. N. Kirpičnikov, "Russische Waffen des 9.-15. Jahrhunderts", *Waffen und Kostümkunde*, 28/2, 1986, p. 85-129.
- Kiss 1985 - A. Kiss, "Studien zur Archäologie der Ungarn im 10. und 11. Jahrhundert", *Die Bayern und ihre Nachbarn*. Wien, 1985.
- Kovács 1976 - L. Kovács, "Über den stand der ungarischen landnahmezeitlichen waffengeschichtsforschung", *MittArchInst*, 6, 1976, p. 82-98.
- Kovács 1980/81 - L. Kovács, "Vooruženie vengrov- obretatelej rodiny: sabli, boevye topory, , kop'ja/ Die waffen der landnehmenden Ungarn: säbel, kampfähnte, lanzen." *MittArchInst*, 10/11, 1980/81, p. 243-255.
- Kovács 1986 - L. Kovács, "Über einige Steigbügeltypen der Landnahmezeit", *AAASH*, 38, 1986, p. 195-225.
- Kovács 1989 - L. Kovács, *Münzen des ungarischen Landnahmezeit – Archäologische Untersuchung der arabischen, byzantinischen, westeuropäischen und römischen Münzen aus dem Karpatenbecken des 10. Jahrhunderts*, Budapest, 1989.
- Kovács 1990 - L. Kovács, "Szablya - kard fegyverváltás. A kétélű kardos 10 - 11. századi magyar sírok keltezéséhez", *ArchÉrt*, 117, 1, 1990, p. 39-49.
- Kovács 1997 - L. Kovács, "István Dienes' größte Ausgrabung in Magyarhomorog-Kónyadomb", *ActaArchHung*, XLIX/4, 1997, p. 363-384.
- Liptáková 1964 - Z. Liptáková, "Dve pohrebiská z X. storočia na juhozápadnom Slovensku", *ŠtudZvesti*, 14, 1964, p. 237-256.
- Mărginean, Huszarik 2007

- Fl. Mărginean, P. Huszarik, "Cimitirul medieval timpuriu de la Nădlac-"Lutărie" (jud. Arad)", *ArchMed*, VI, 2007, p. 17-38.
- Medeleț, Tănase, Gáll 2001
- Fl. Medeleț, D. Tănase, E. Gáll, "X. századi honfoglalás kori temetőrészlet Vejtén (Temes megye, Románia)", *Arch.Ért.*, 126, 2001, p. 99-112.
- Medgyesi 1993
- P. Medgyesi, "10-11. századi temető Sarkadkeresztúr határában/Ein Gräberfeld aus dem 10.-11. Jahrhundert in der Gemarkung Sarkadkeresztúr", *HOMÉ*, XXX-XXXI/2, 1993, p. 487-511.
- Medgyesi 2015
- P. Medgyesi, *Honfoglalók a békési tájakon. Békés megye jelentősebb 10-11. századi sírleletei*, Békéscsaba, 2015.
- Nepper 2002
- M. Ibolya Nepper, *Hajdú-Bihar megye 10-11. századi sírleletei*, I-II, Budapest-Debrecen, 2002.
- Nevizánsky, Košta 2009
- G. Nevizánsky, J. Košta, "Výskum staromadarského jazdeckého pohrebiska v Strede nad Bodrogom v rokoch 1926 a 1937/Grabung eines altmagyarischen Reitergräberfeldes in Streda nad Bodrogom ind den Jahren 1926 und 1937", *Slov. Arch.*, LVII, 2, 2009, p. 301-354.
- Párducz, Tary 1939
- M. Párducz, L. Tary, "A Csongrád-Vendelhalmi honfoglaláskori", *FolArch*, I-II, 1939, p. 189-199.
- Patay 1957
- P. Patay, "Adatok a nogradi dombvidék X–XI. századi telepulestortenehez /Contribution a l'histoire du peuplement, aux Xe et XIe siecle, de region de collines de Nograd", *ArchÉrt.*, 84/1, 1957, p. 58-65.
- Pinter, Ţiplic 2006
- Z. K. Pinter, I. M. Ţiplic, "Orăştie- Dealul Pemilor X2", H. Ciugudean, Z. K. Pinter, G. T. Rustoiu (Coord.), *Habitat-Religie-Etnicitate: Descoperiri arheologice din secolele IX-XI în Transilvania/Habitat-Religion-Ethnicity: 9th-11th Century Archaeological Finds in Transylvania*. Catalog de expoziție/Exhibition Catalogue, Editura Altip, Alba Iulia, 2006, p. 78-83.
- Radičević, Špehar 2015
- D. Radičević, P. Špehar, "Some remarks on Hungarian Conquest Period Finds in Vojvodina", *Acta Archaeologica Carpathica*, 50, 2015, p. 137-162.
- Rădulescu, Gáll 2001
- A. Rădulescu, E. Gáll, "Das landnahmezeitliche Gräberfeld von Temesvár (Timișoara) – Csókaerdő", *ActaArchHung*, 52, 1-3, 2001, p. 155-193.
- Rejholcová 1974
- M. Rejholcová, "Pohrebisko z 10.-12. storočia v Nových Zámkoch", *Slov.Arch.*, 22, 1974, p. 435-464.
- Révész 1987
- L. Révész, "Lyraförmige schnallen in dem Karpatenbecken", *AAASH*, XXXIX/3–4, 1987, p. 257-285.

- Révész 1996 - L. Révész, *A karosi honfoglalás kori temetők. Régészeti adatok a Felső-Tisza-Vidék 10. századi történetéhez*, Miskolc, 1996.
- Révész 2000 - L. Révész, "Hitelesítő ásatás a tuszéri honfoglalás kori temető területén/Nachgrabung im Gebiet des landnahmezeitlichen Gräberfeldes von Tuszér", *JAMÉ*, XLII/2000, p. 7-32.
- Ruttkay 1976 - A. Ruttkay, "Waffen und Reiterausrüstung des 9. bis zur ersten Hälfte des 14. Jahrhunderts in der Slowakei (II)", *Slov.Arch.*, XXIV, 2, 1976, p. 245-396.
- Ruttkay 1982 - A. Ruttkay, "The Organization of Troops, Warfare and Arms in the Period of the Great Moravian State", *Slov.Arch.*, XXX/1, 1982, p. 165-198.
- Sebestyén 1932 - Cs. K. Sebestyén, „*A sagittis Hungarorum...*” *A magyarok ijja és nyila*, 1932.
- Széll 1941 - M. Széll, "XI. századi temetők Szentes környékén./Les cimetières du XI^{ème} siècle aux environs de Szentes", *FolArch*, III-IV, 1941, p. 231-267.
- Stanojev 1989 - N. Stanojev, *Nekropole X-XV veka u Voivodini*. Novi Sad, 1989.
- Starostin, Kazakov, Gabjašev 1973 - P. N. Starostin, E. P. Kazakov, R. S. Gabjašev, "Igmiskij mogil'nik/Necropole d'Igime", *SovArh*, 1, 1973, p. 260-264.
- Teodor 2003 - D. Gh. Teodor, "Topoare medievale timpurii în regiunile carpato-nistriene", D. Marcu Istrate, A. Istrate, C. Gaiu (Coord.), *In memoriam Radu Popa. Temeiuri ale civilizației românești în context european*. Complexul Muzeal Județean Bistrița – Năsăud, Editura Accent, 2003, p. 185-200.
- Točik 1955 - A. Točik, "Nové výskumy na pohrebištiach z. X. a XI. st. na Slovensku", *ArchRozhledy*, VII, 1955, p. 489-494, 497-501, 560-561, 565-566.
- Točik 1968 - A. Točik, *Altmagyarische Gräberfelder in der Südwestslowakei*, *Archaeologica Slovaca- Catalogi*, Tomus III, Verlag der Slowakischen Akademie der Wissenschaften, Bratislava, 1968.
- Točik 1987 - A. Točik, "Nachgroßmährische Gräberfelder des 10. und 11. Jh. in der Südwestslowakei", *ŠtudZvesti*, 23, 1987, p. 177-241.
- Točik 1992 - A. Točik, "Materialy k dejinám južného Slovenska v 7.-14. storočí", *ŠtudZvesti*, 28, 1992, p. 5-250.
- Țiplic, Pinter 2007 - I. M. Țiplic, Z. K. Pinter, "Necropola medievală timpurie de la Orăștie - Dealul Pemilor X2. 3. Campaniile arheologice din anii 2001-2004", *Brukenthal. Acta Musei*, II. 1, 2007, p. 153-164.
- Țuțuianu 2005 - D.-C. Țuțuianu, "Necropola medievală-timpurie de la Deva-Micro 15. Date vechi- considerații noi", *Sargetia*, XXXIII, 2005, p. 255-270.
- Végh 1970 - K. Végh, "Honfoglalás - és kora Árpád - kori sírleletek a miskolci múzeumban", *HOMÉ*, IX, 1970, p. 79-107.
- Végh 1992 - K. K. Végh, "Honfoglalás kori sírleletek Tiszaszederkényből", *ArchÉrt*, 119/1-2, 1992, p. 62-67.

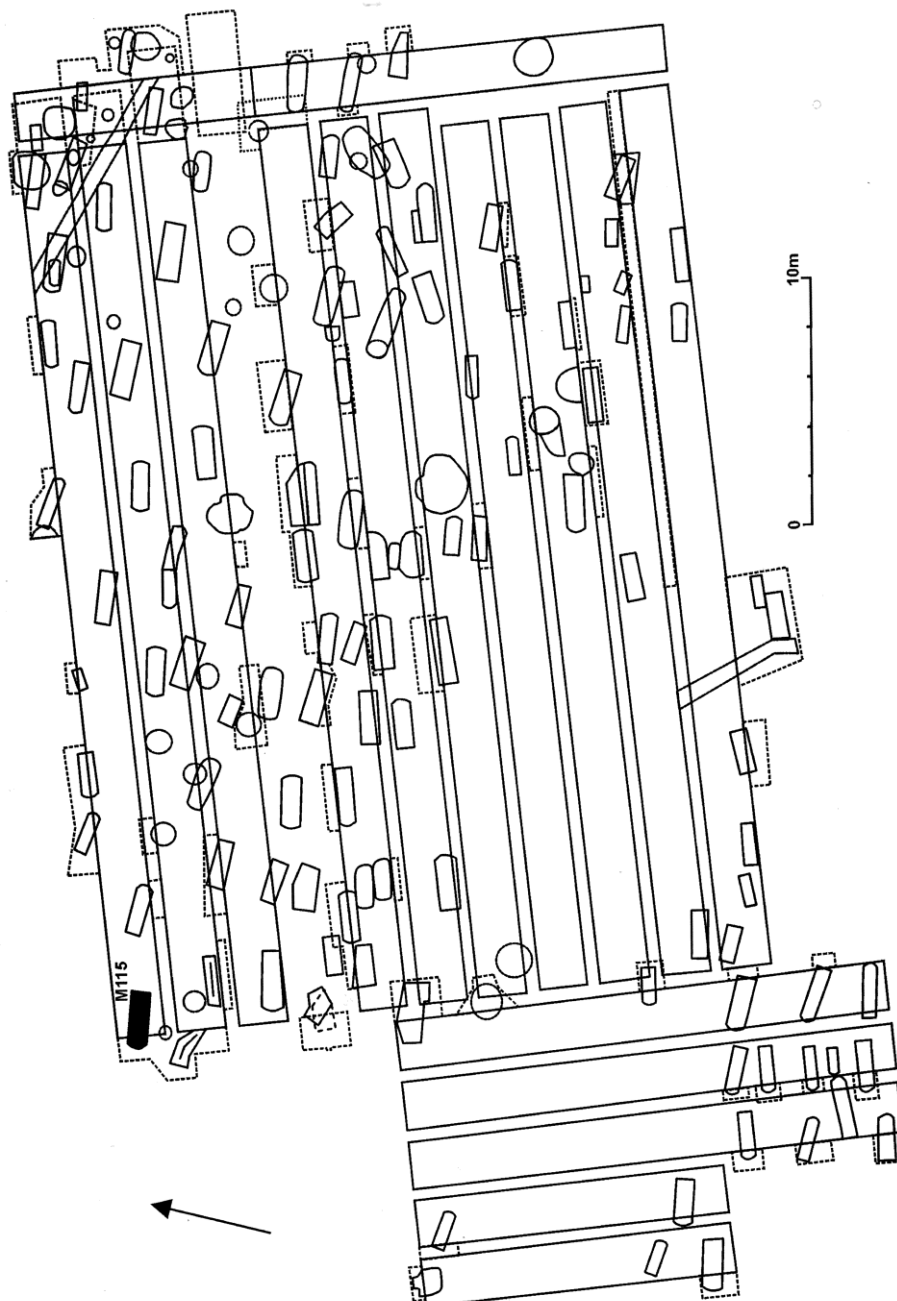


Fig. 1.

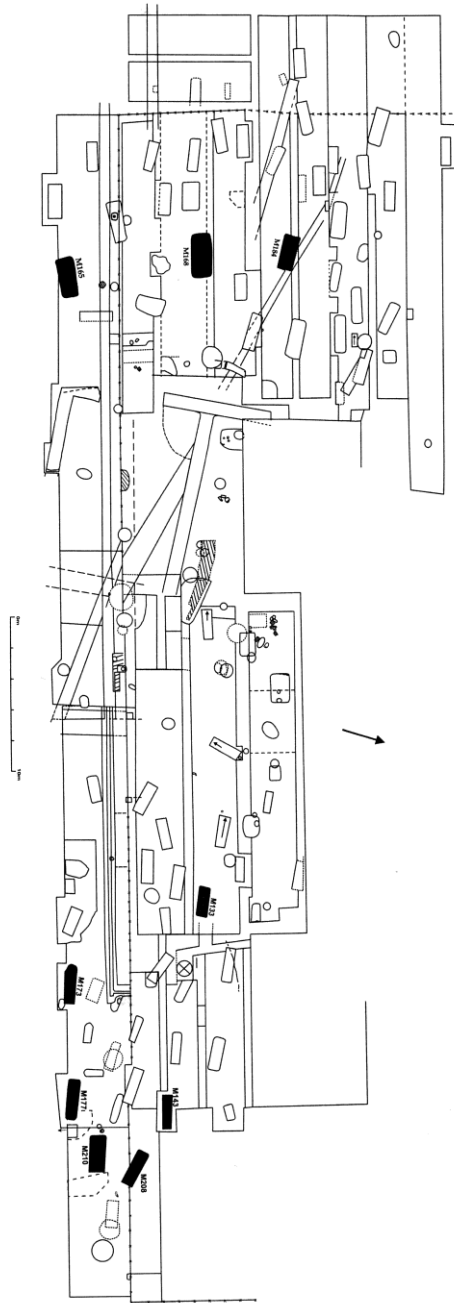


Fig. 2.

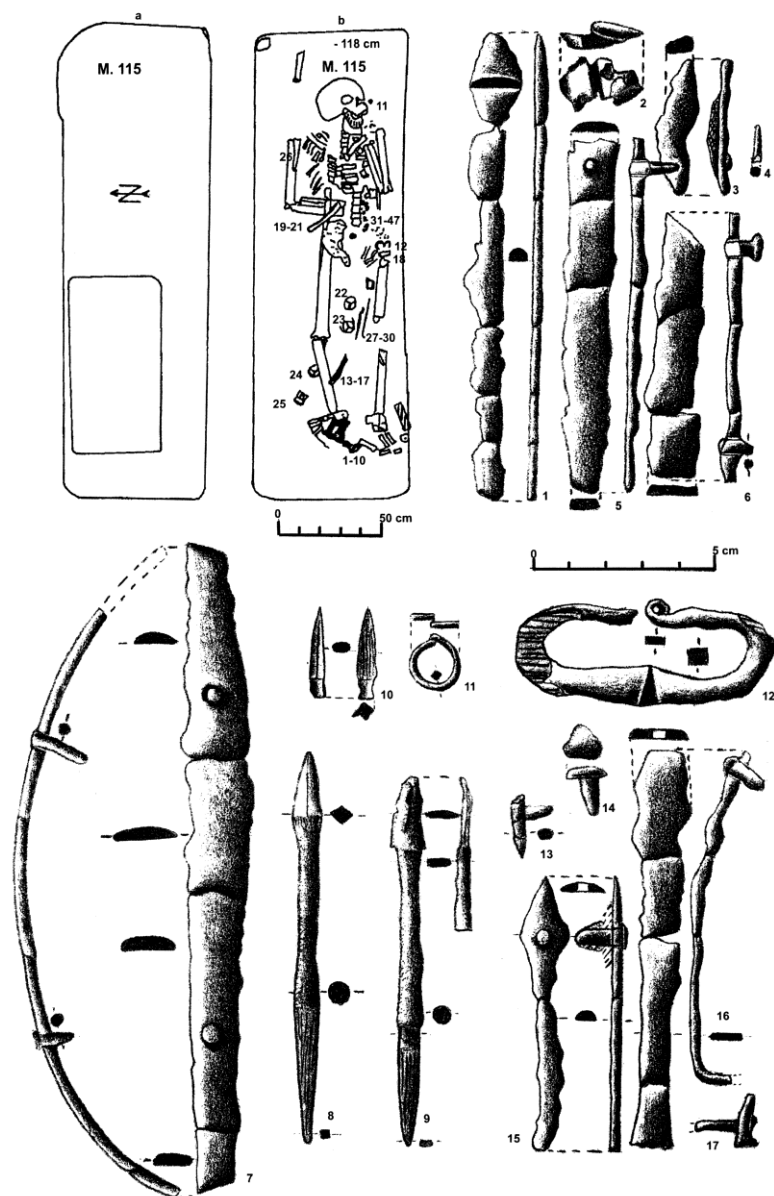


Fig. 3.

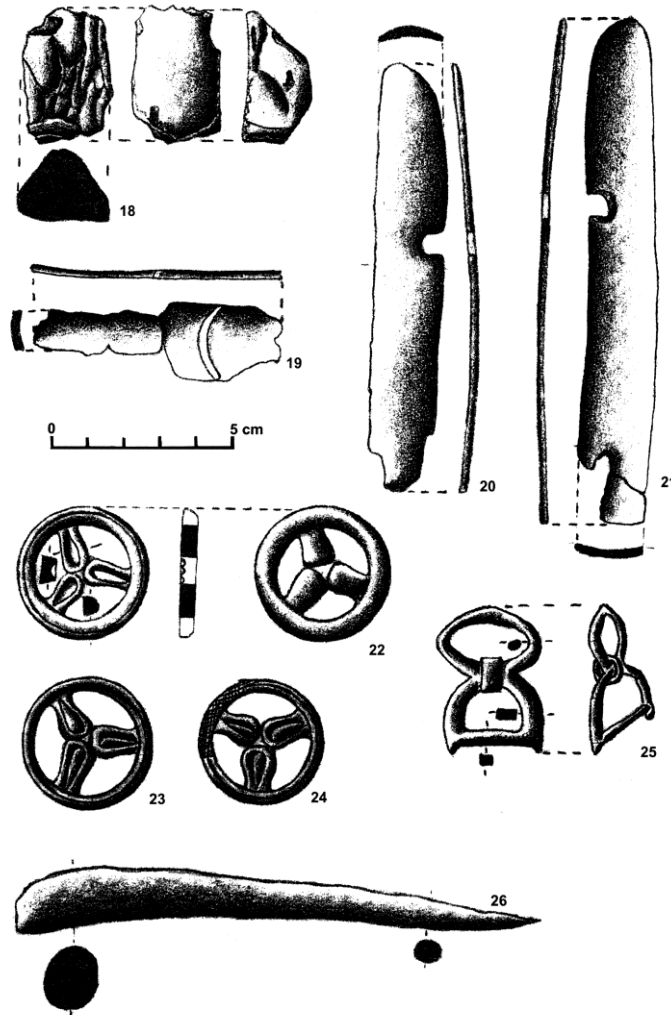


Fig. 4.

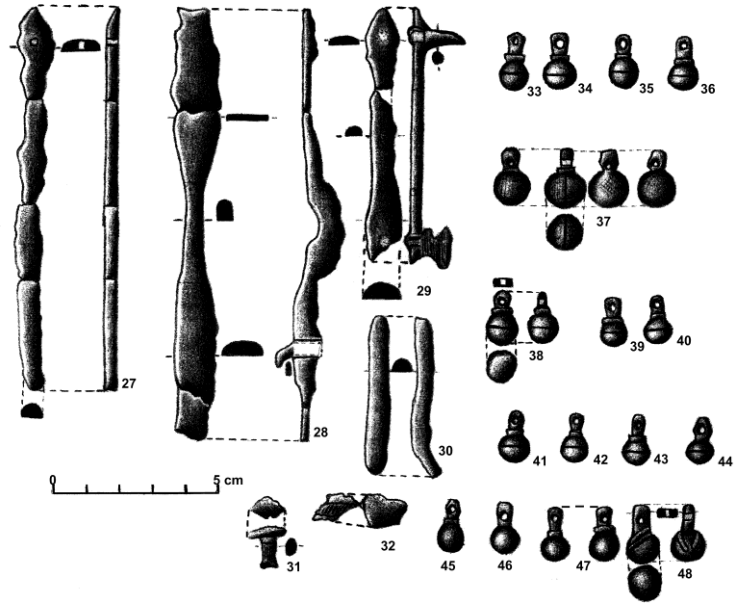


Fig. 5.

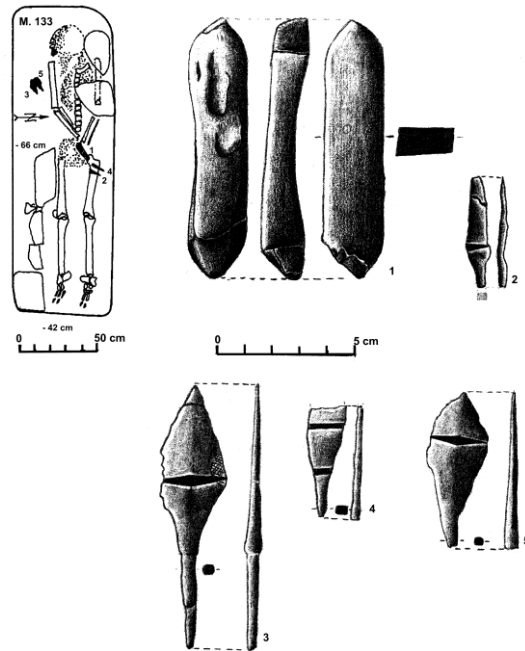


Fig. 6.

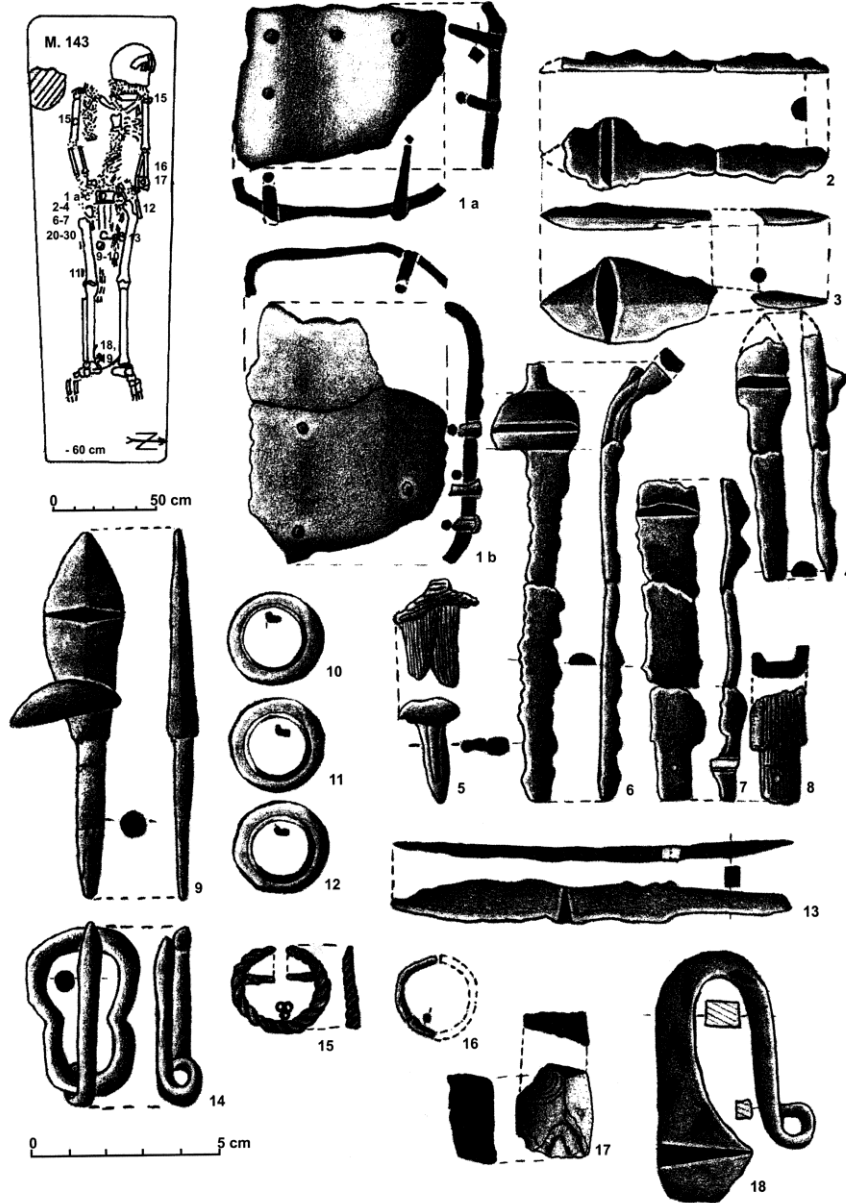


Fig. 7.

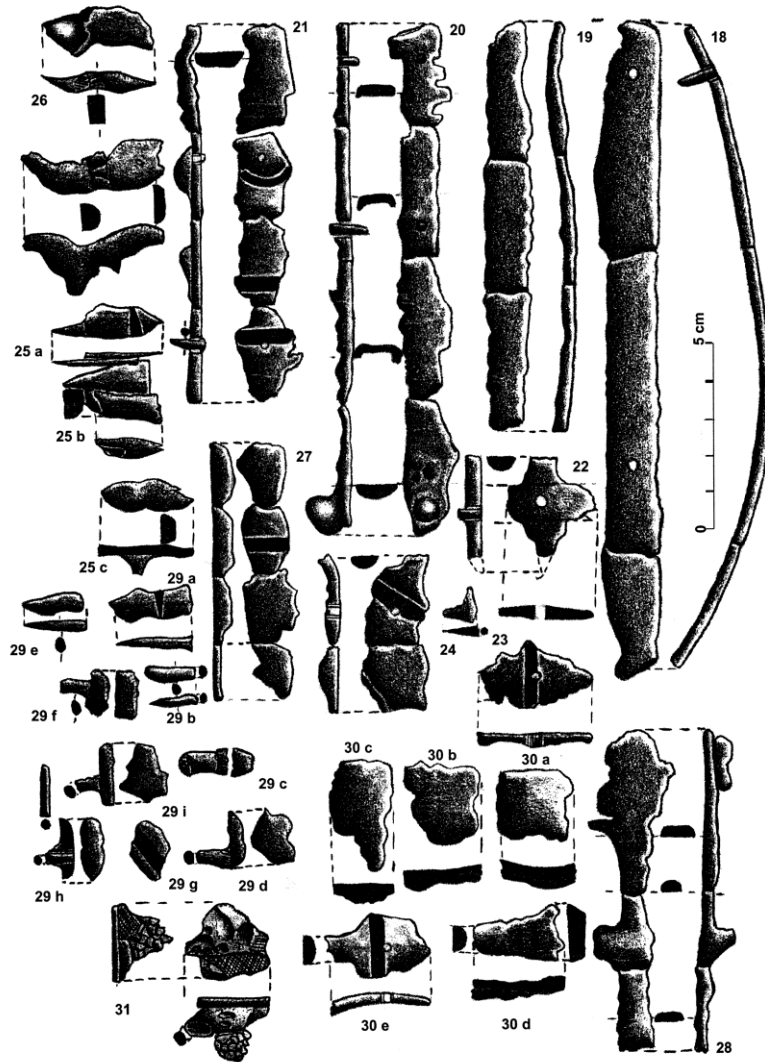


Fig. 8.

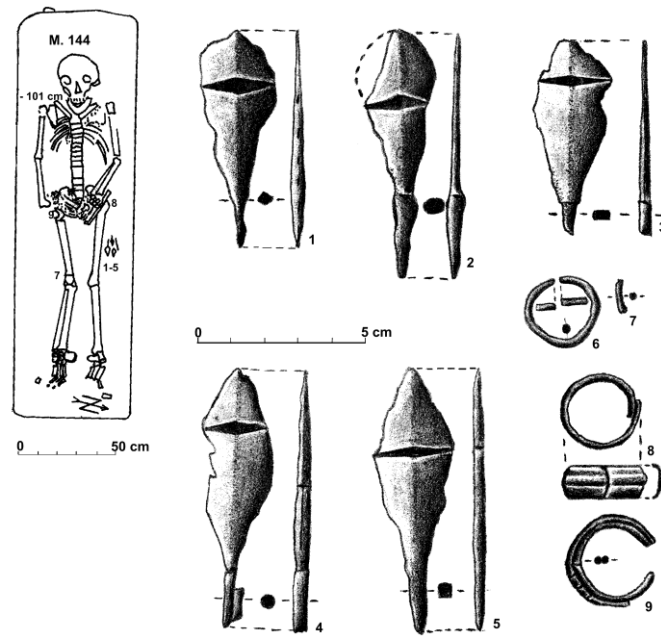


Fig. 9.

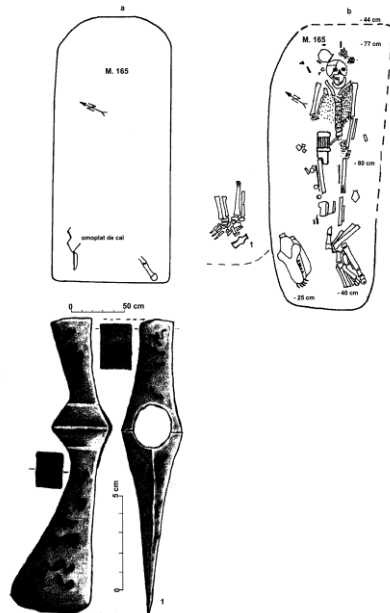


Fig. 10.

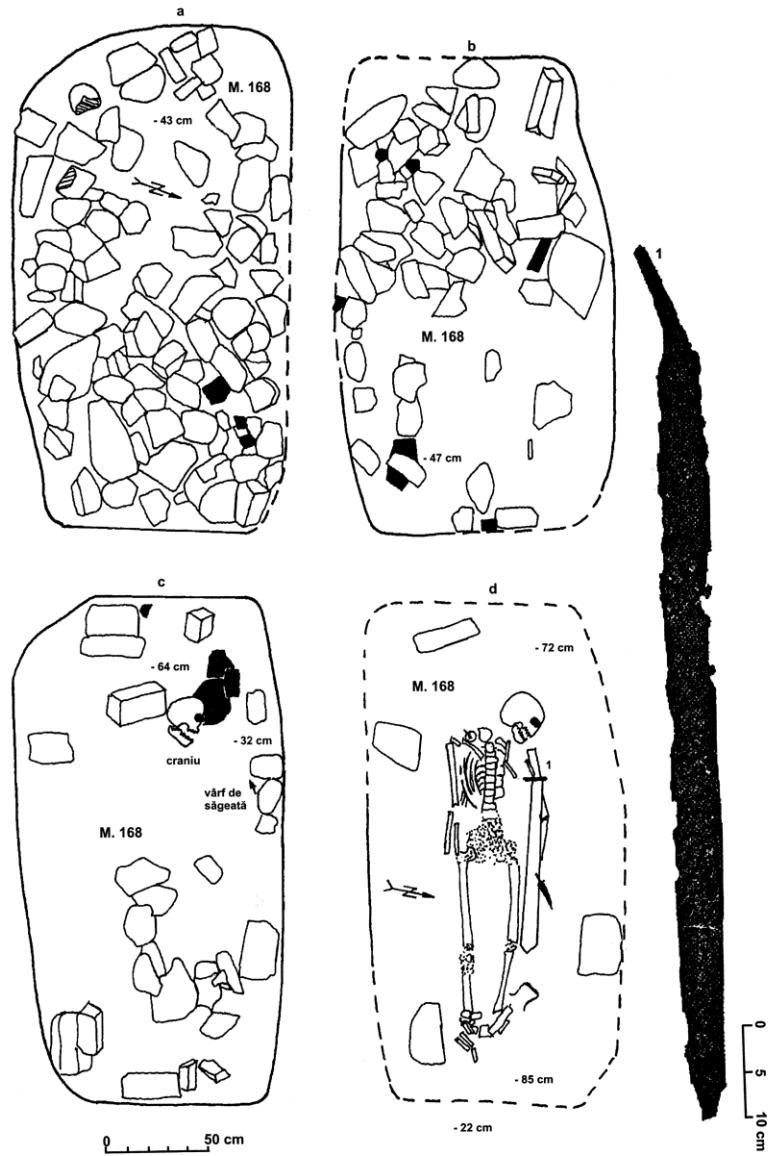


Fig. 11.

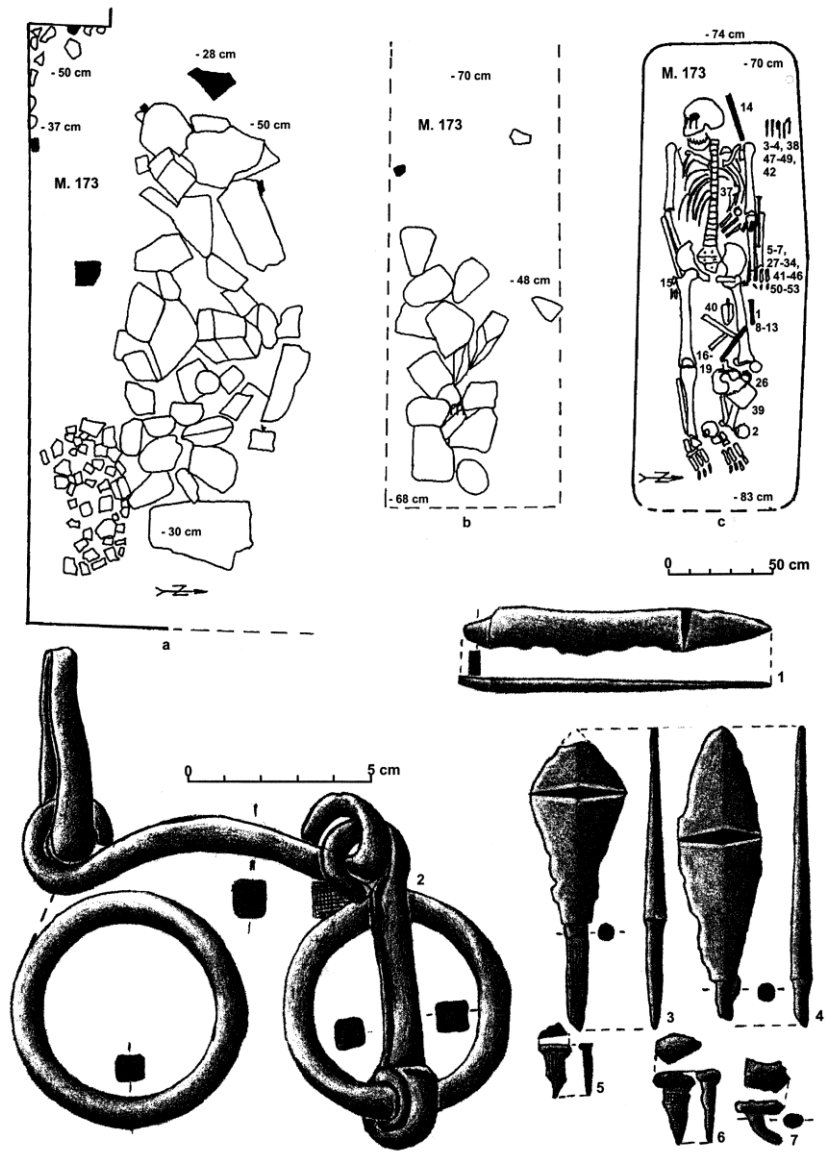


Fig. 12.

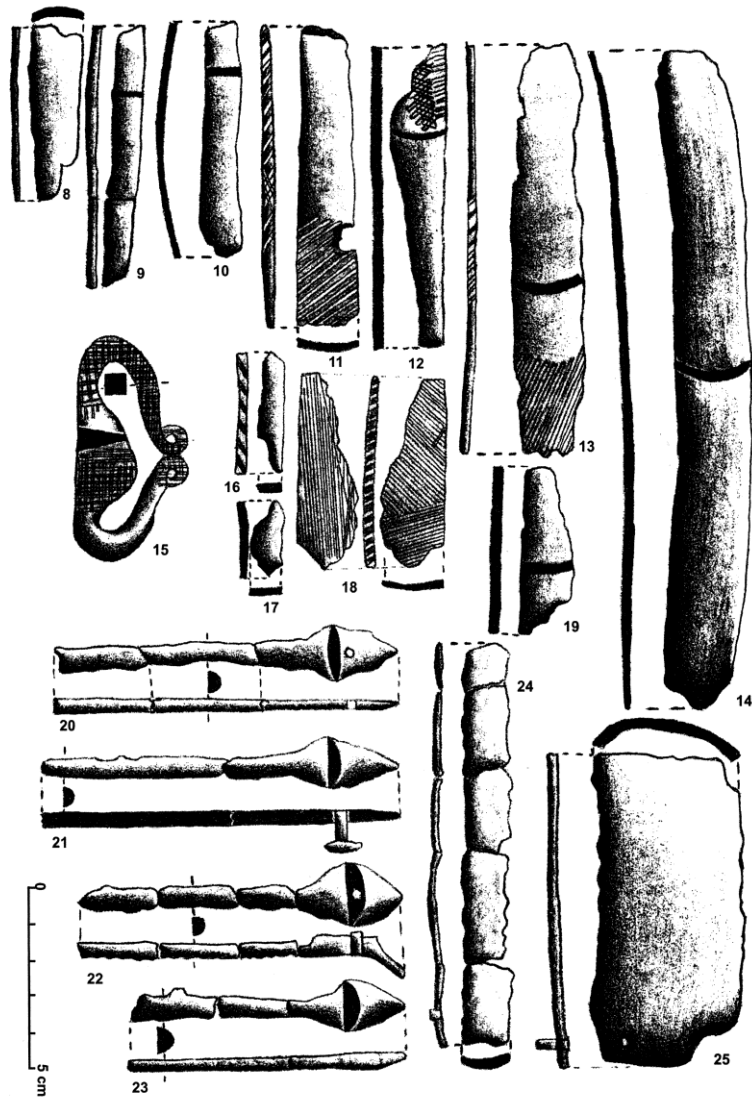


Fig. 13.

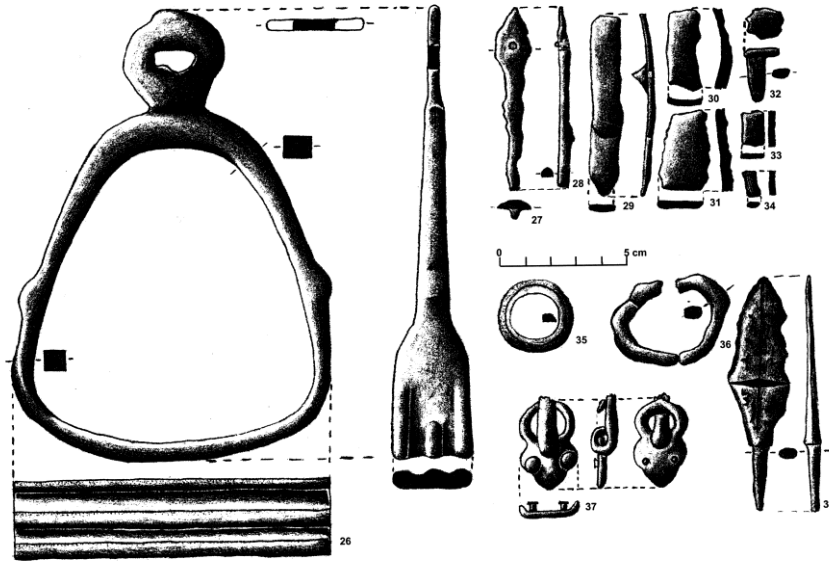


Fig. 14.

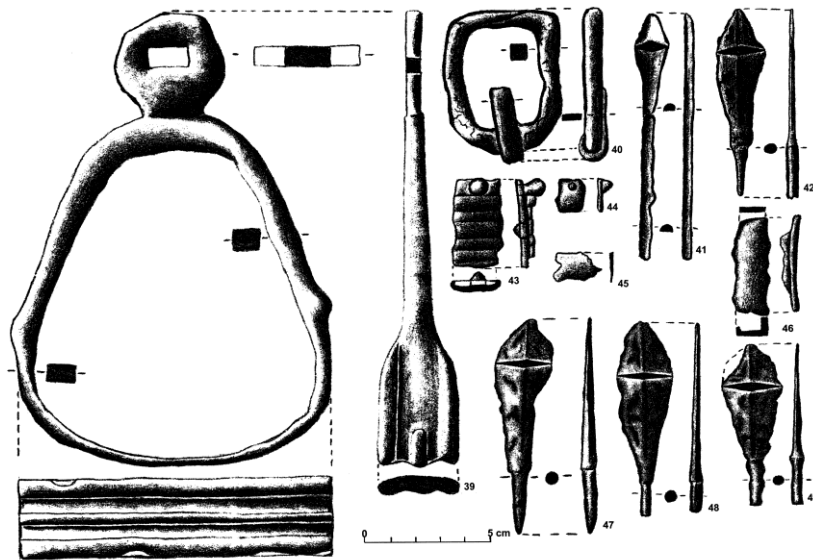


Fig. 15.

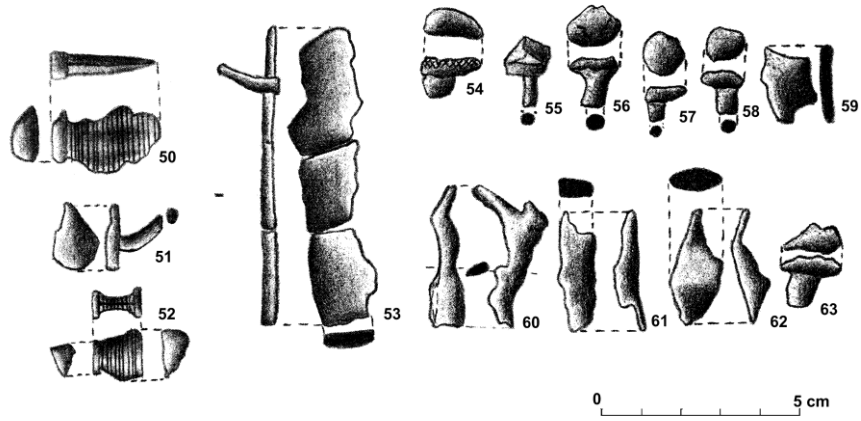


Fig. 16.

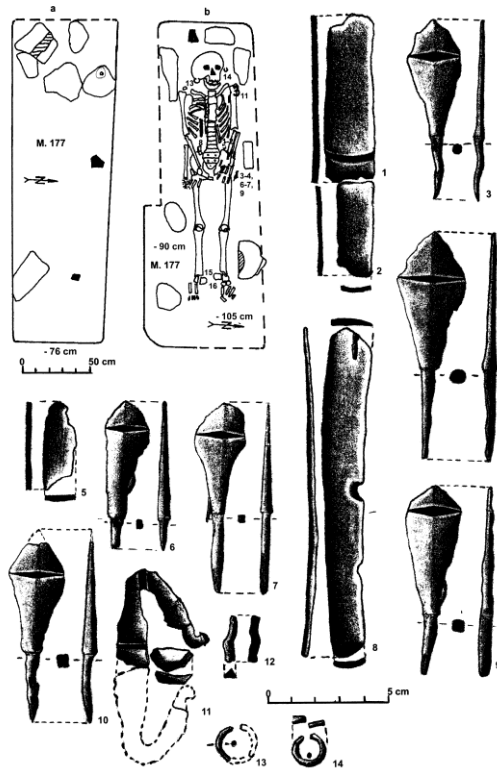


Fig. 17.

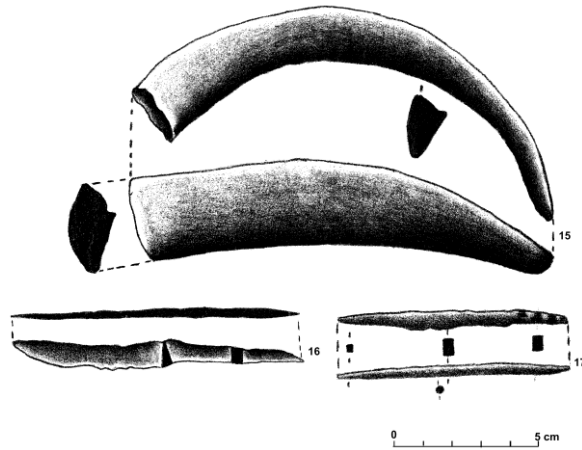


Fig. 18.

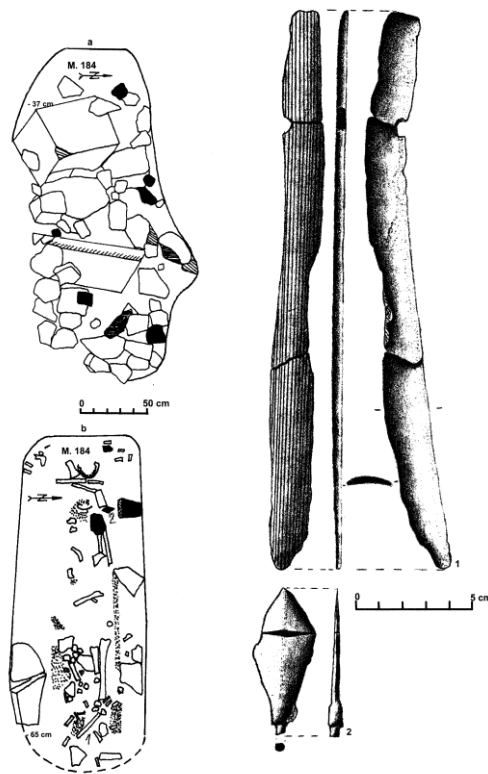


Fig. 19.

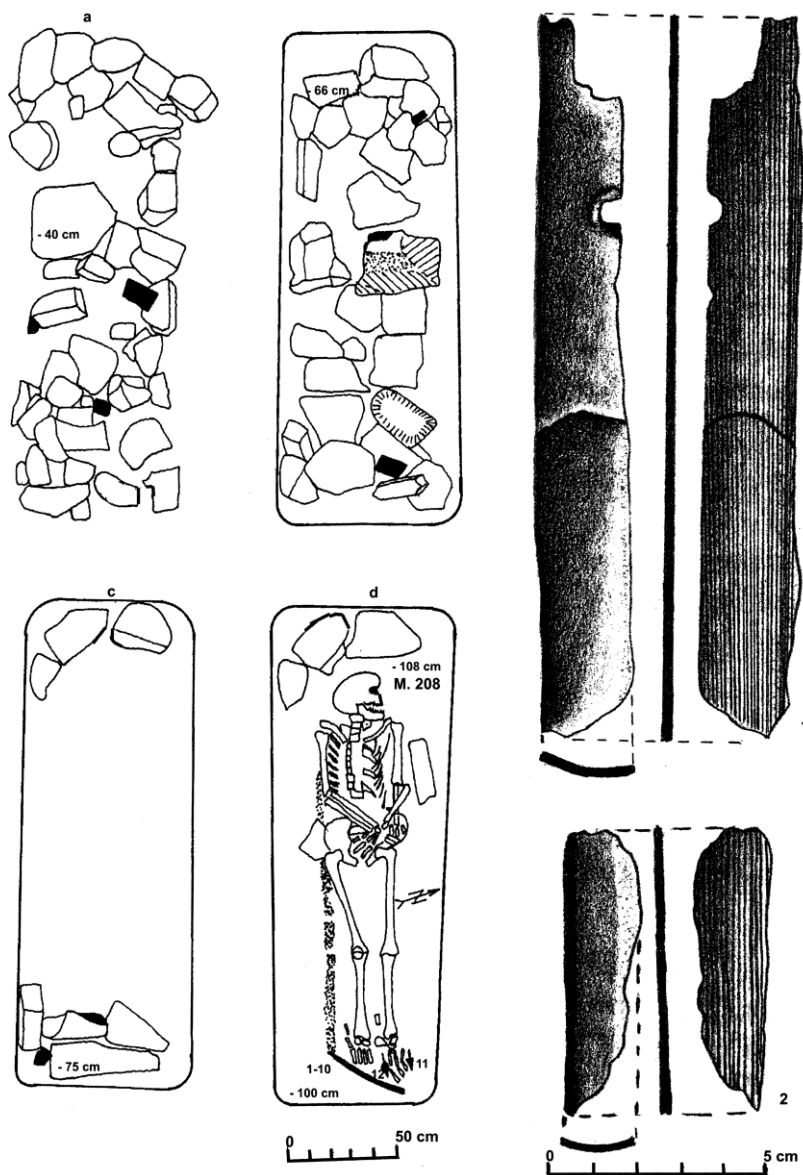


Fig. 20.

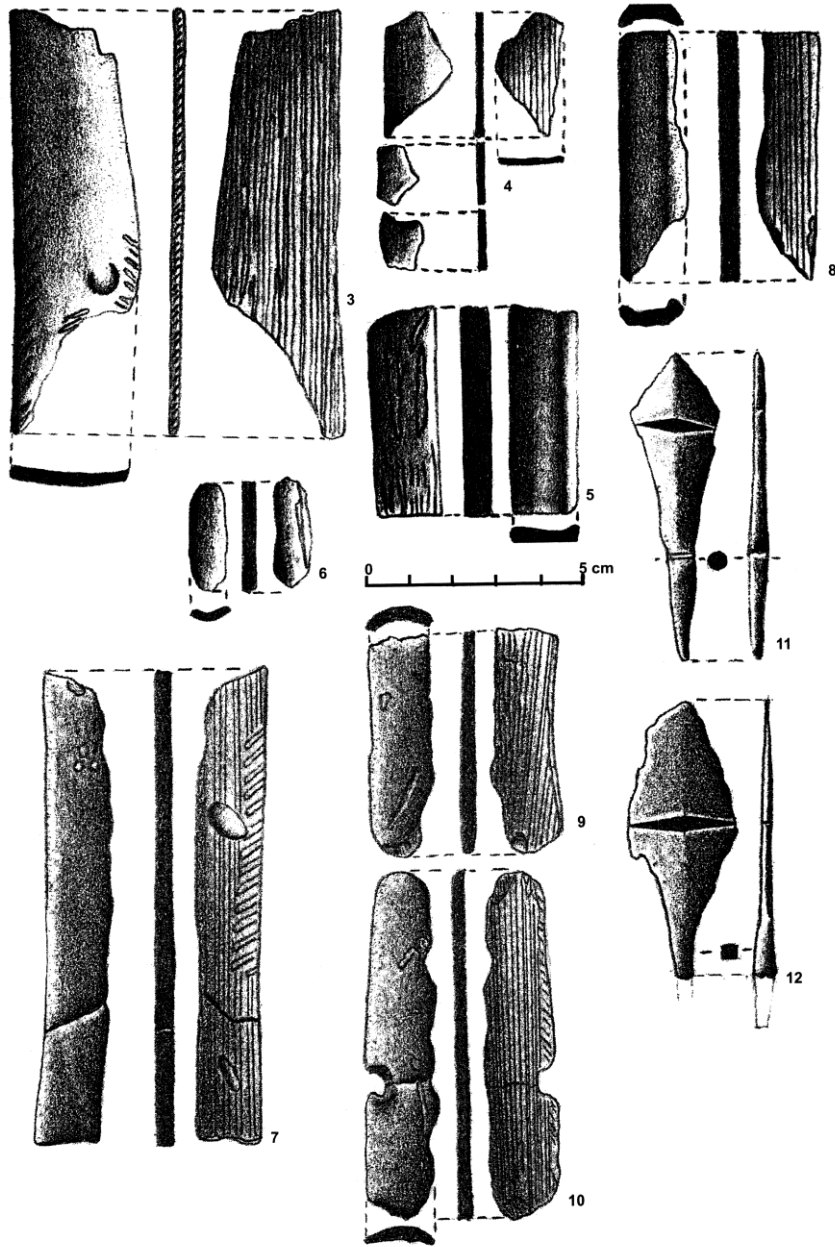


Fig. 21.

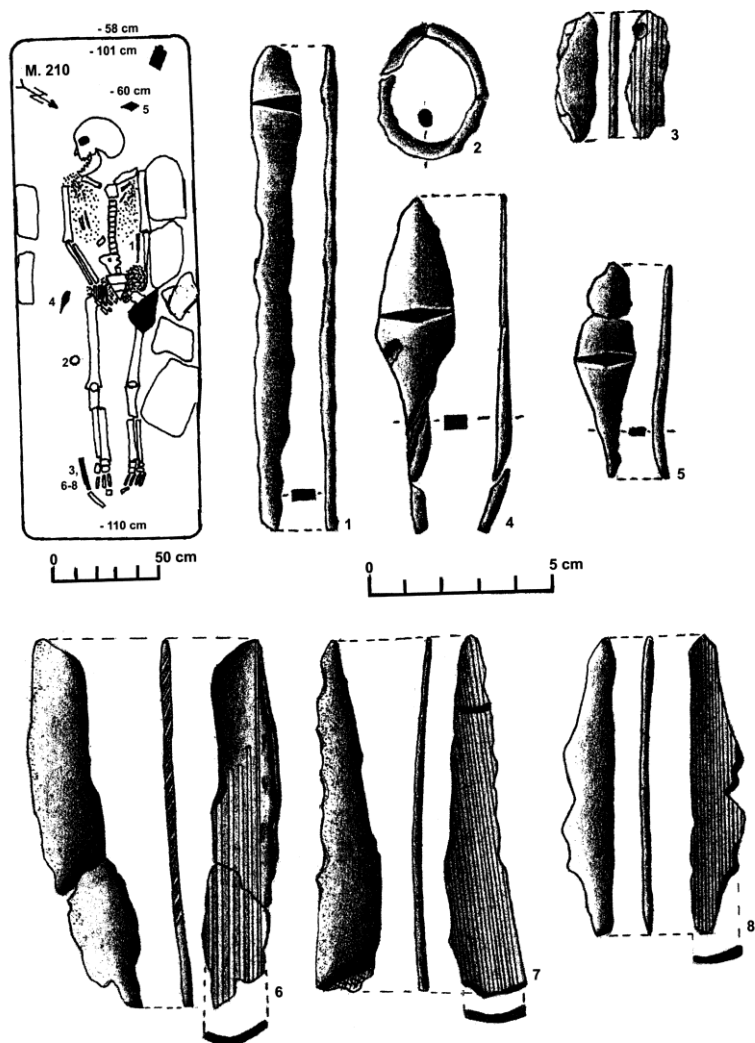


Fig. 22.

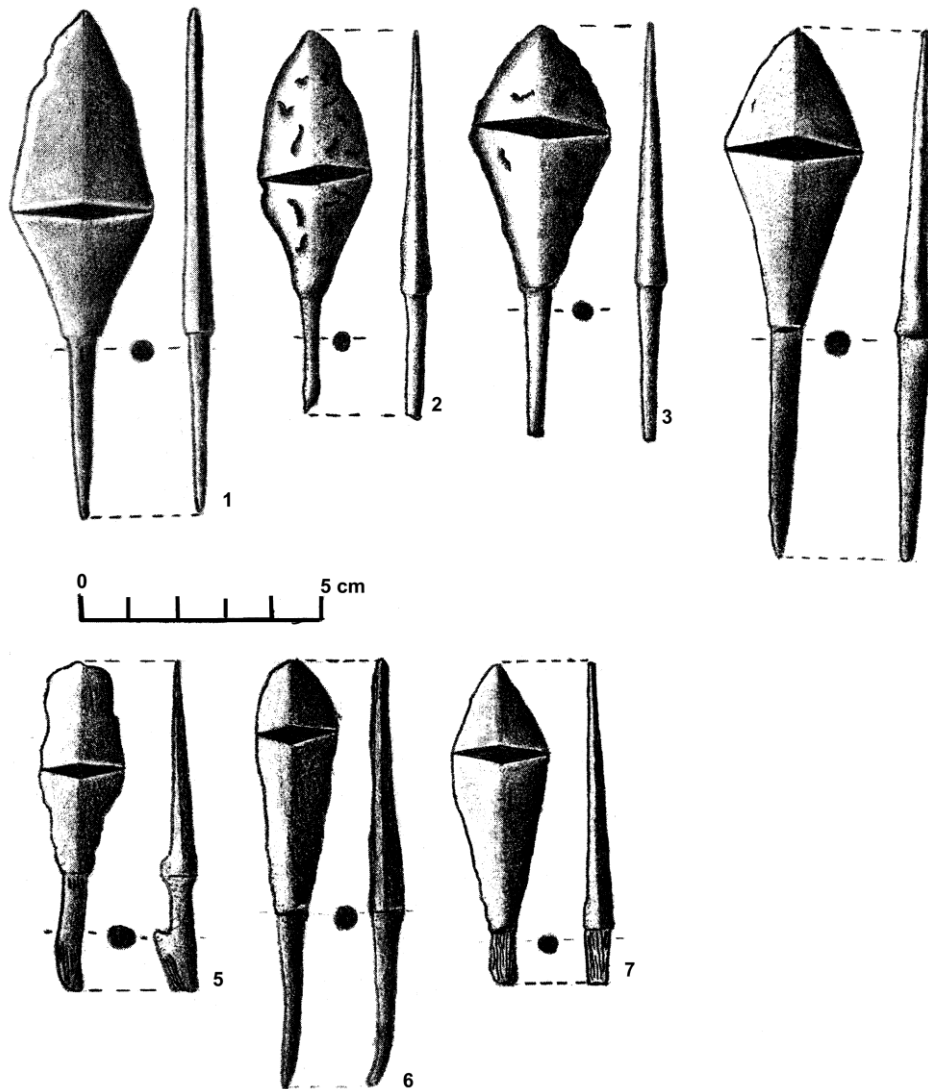


Fig. 23.